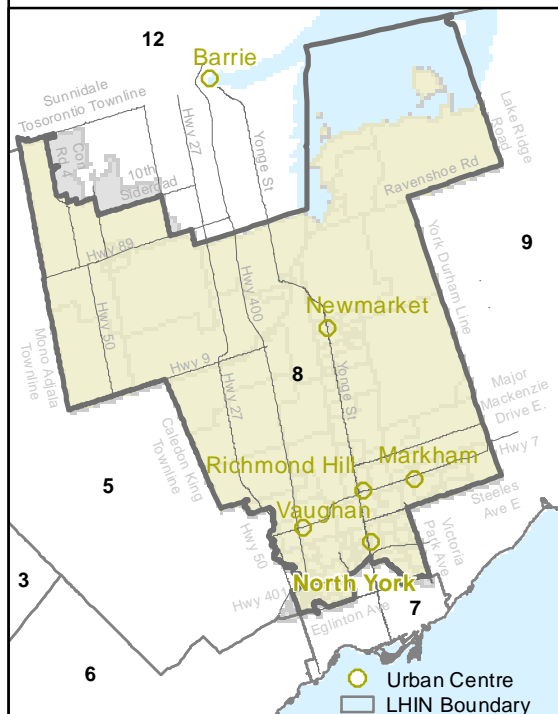
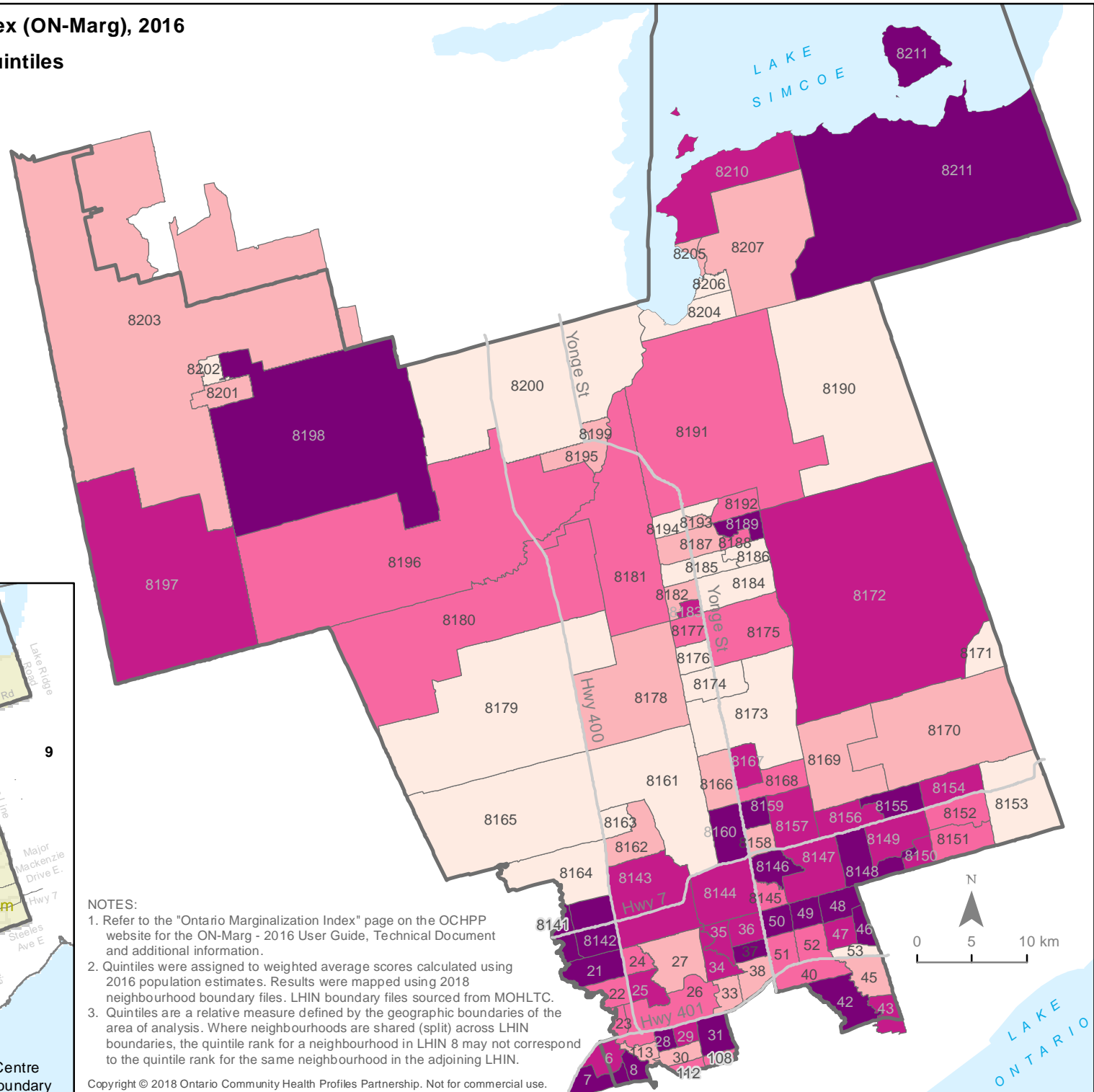
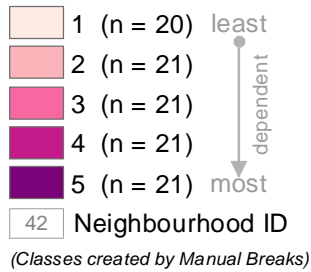


# Ontario Marginalization Index (ON-Marg), 2016

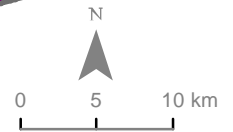
## Dependency Quintiles

### Central LHIN (LHIN 8) Neighbourhoods



**NOTES:**

1. Refer to the "Ontario Marginalization Index" page on the OCHPP website for the ON-Marg - 2016 User Guide, Technical Document and additional information.
2. Quintiles were assigned to weighted average scores calculated using 2016 population estimates. Results were mapped using 2018 neighbourhood boundary files. LHIN boundary files sourced from MOHLTC.
3. Quintiles are a relative measure defined by the geographic boundaries of the area of analysis. Where neighbourhoods are shared (split) across LHIN boundaries, the quintile rank for a neighbourhood in LHIN 8 may not correspond to the quintile rank for the same neighbourhood in the adjoining LHIN.



LAKE  
ONTARIO