



Ontario Community Health Profiles Partnership Project (OCHPP) Centre for Urban Health Solutions, St. Michael's Hospital

**Presentation for
Cancer Care Ontario & Ontario
Palliative Care Network Secretariat**

July 24, 2017



OCHPP Team

**Rick Glazier, Peter Gozdyra, Nadiya Minkovska,
Mohammad Agha, Gary Moloney, Kaveh
Khalilian, Anne-Marie Tynan**



Agenda

Part 1 Introduction & Overview (15 minutes)

- Welcome, introductions, format for session (Anne-Marie Tynan, C-UHS; Nathalie CCO)
- About the Toronto/Ontario Community Health Profiles Partnership (OCHPP) Project – origins, data sources, indicators, partners) (Rick Glazier, C-UHS)
- Questions?

Part 2 Geography Primer + Linkage to Health Data (25 minutes)

- Geography 101: A GIS Primer – A review of current and new Ontario geographies (Peter Gozdyra, C-UHS)
- Questions
- Data linkages – How we link health data to place (Mohammad Agha, C-UHS)
- Questions?

Part 3 The OCHPP website – overview and data (45-50 minutes)

- The OCHPP website – www.ontariohealthprofiles.ca – overview of the site
- Data tables, maps and data standards – posting on the OCHPP site.
- Other functionality
- Questions?



The Ontario Community Health Profiles Partnership: Origins, Data Sources, Indicators & Partners

Rick Glazier



How the partnership started



Overall goals of the partnership

- Foster **collaborations & partnerships** between health services providers, researchers and policy-makers
- Facilitate **access to health information** to support planning
- Maximize the **effective use of system resources** for planning
- **Increase capacity** of health service providers to use health information
- Deepen **understanding of health inequities** and how to measure, monitor and reduce them.



Focus of the partnership

- Vulnerable populations
- Neighbourhood-level areas with greatest health needs
- Multiple barriers to access
- Translation and cultural interpretation priorities
- Equity



What gaps are we filling?

- Producing health indicators for communities and service providers to:
 - ✓ **Reduce duplication** of work
 - ✓ **Maximize efficiency and productivity** by collaborating and sharing
 - ✓ Use **common** definitions, data standards, methods, quality assurance
 - ✓ Create a **single point of access** for health indicators **on website**
 - ✓ Provide **information and training**



The OCHPP Website

- In 2005 the Toronto Community Health Profiles Partnership launched the Toronto Community Health Profiles Partnership/Website with the purpose of making detailed, area-level health data available to everyone.
- Data available on freely accessible portal
- Updated regularly with latest data
- “Partners” have access to local area geography, a team of experts & custom requests



Access to numerous data sources

- Physician services (OHIP)
- Hospitalizations (CIHI, OMHRS)
- Emergency Department visits (NACRS)
- Vital Statistics (Office of the Registrar General of Ontario)
- Specialized databases (Cytobase, Ontario Breast Screening Program)
- Chronic disease provincial registries (Diabetes, Asthma, COPD, ODD etc.)
- Census (1991, 1996, 2001, 2006, 2011, 2016)
- Immigration data (CIC) linked to health services use
- Numerous Geographic datasets
- Partner data from Toronto Public Health (e.g. STI, Mothers & Babies)
- Other sources of data that becomes available to us



Current indicators on the website

- Socio-demographic Data
- Hospital Admissions
- Emergency Department Visits
- Adult Health and Disease
- Prevention (Cancer Screening)
- Sexual Health
- Mothers & Babies
- Ontario Marginalization Index
- Premature Mortality
- Primary Care (Attachment & Continuity In Care) & Interprofessional Teams
- Children & Youth
- Palliative Care - *new*



Our Partners

- Toronto Central Local Health Integration Network (TCLHIN LHIN)
- Central Local Health Integration Network (CLHIN)
- Institute for Clinical Evaluative Sciences
- Toronto Public Health
- Wellesley Institute
- Access Alliance Multicultural Health & Community Services
- Wellbeing Toronto
- St. Michael's Hospital – Centre for Urban Health Solutions



Questions?



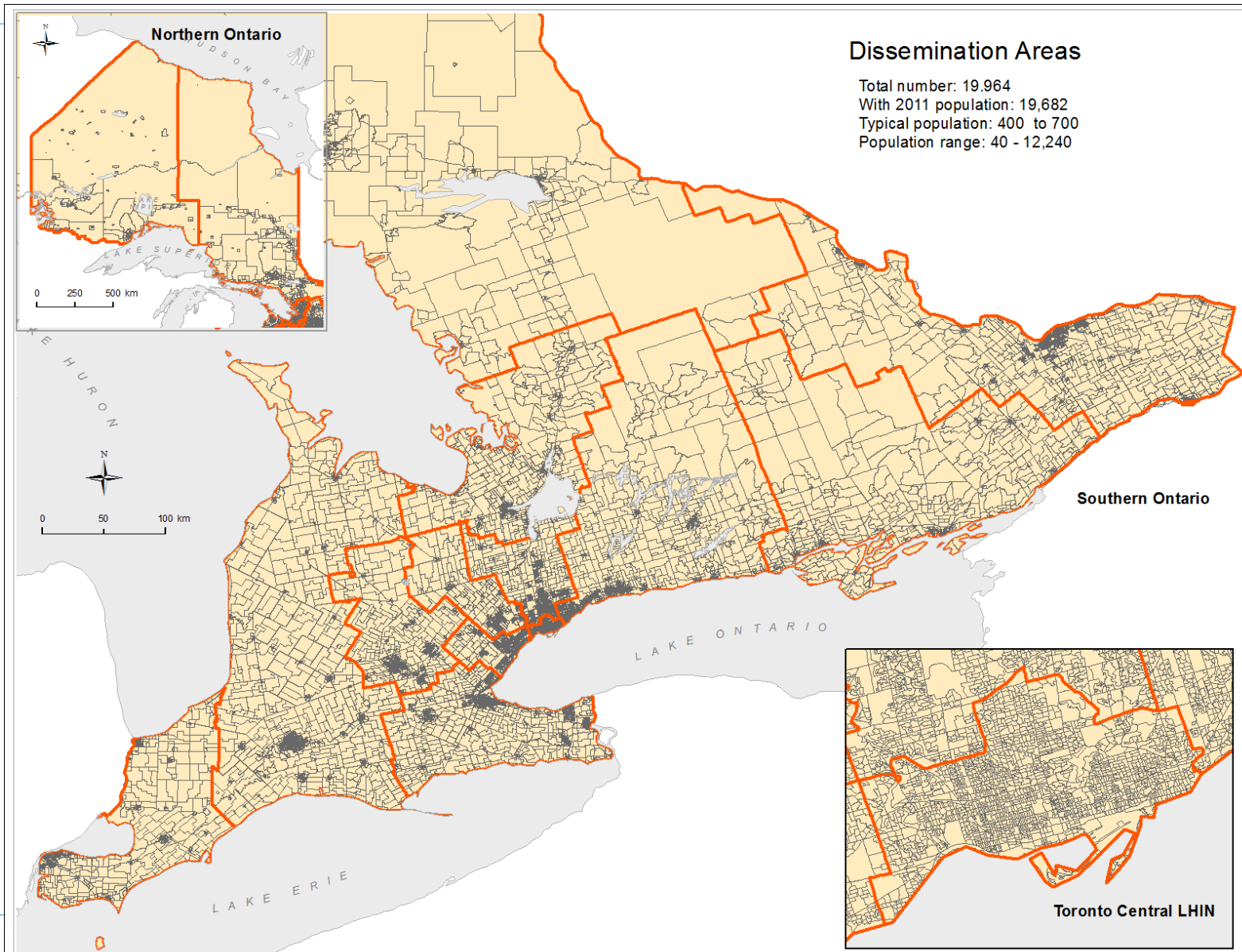
Geography 101: Ontario's Geographic Units: Overview & Recent Changes

Peter Gozdyra

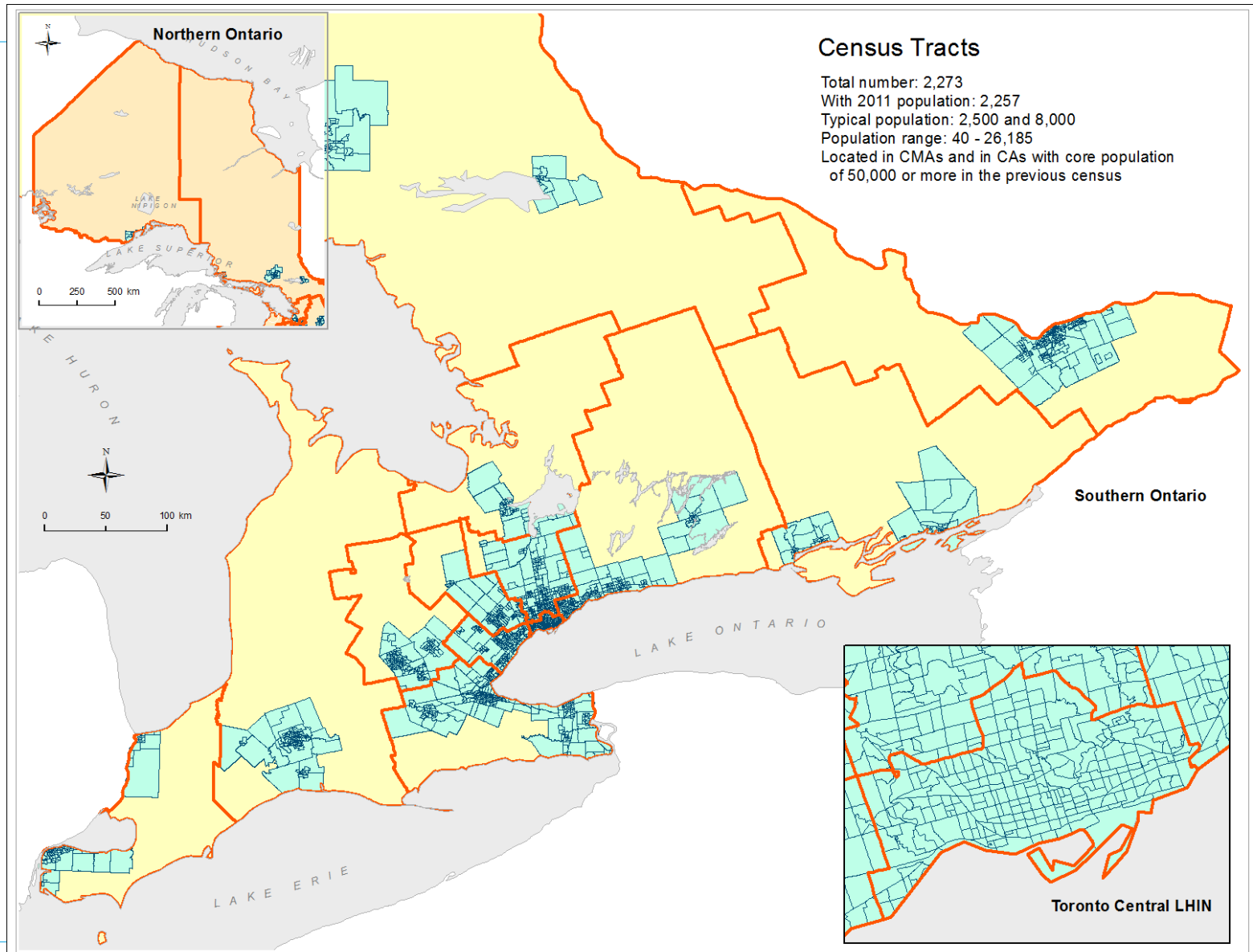


1. Review of standard geographic units
2. New geographic areas

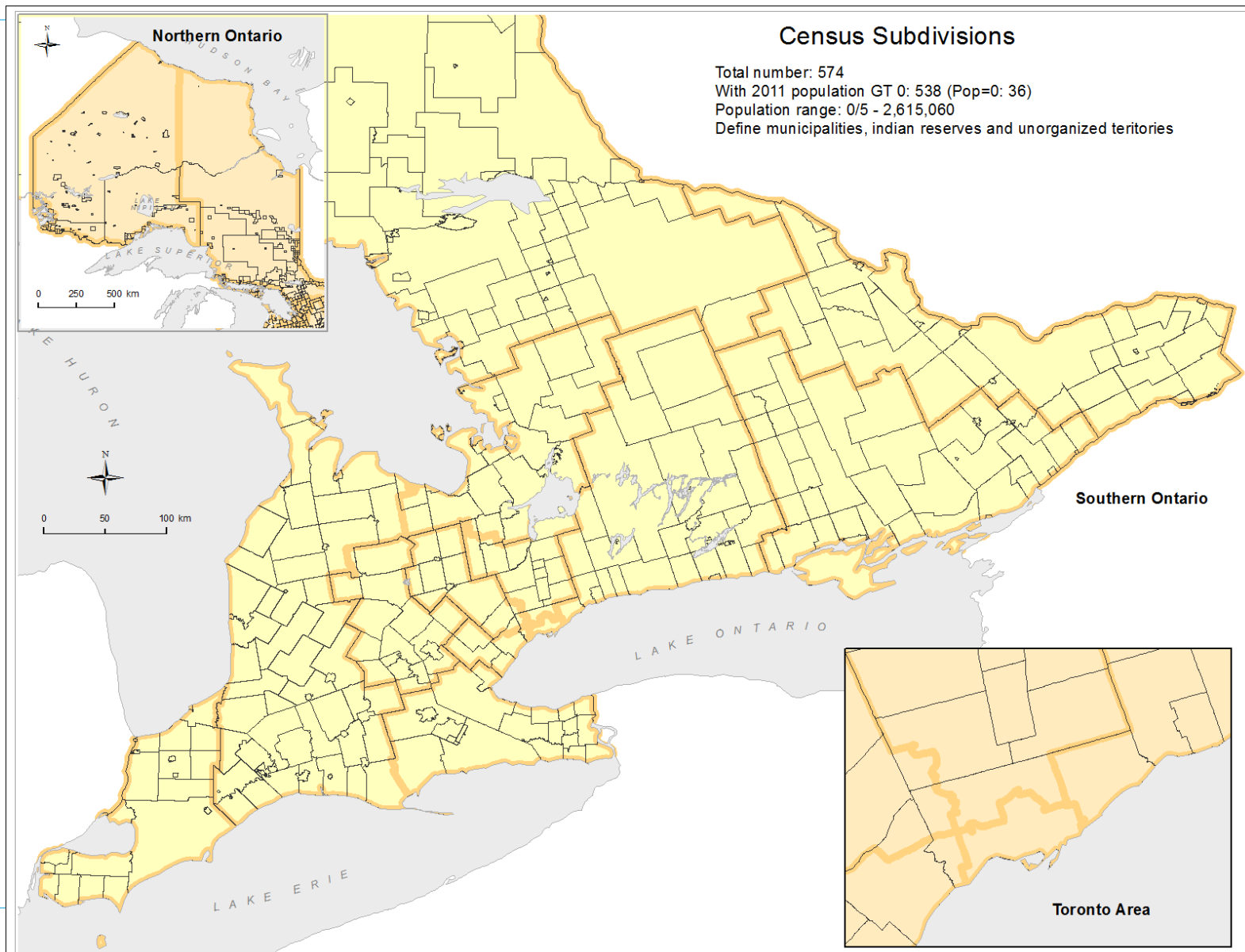
Standard Units – census based



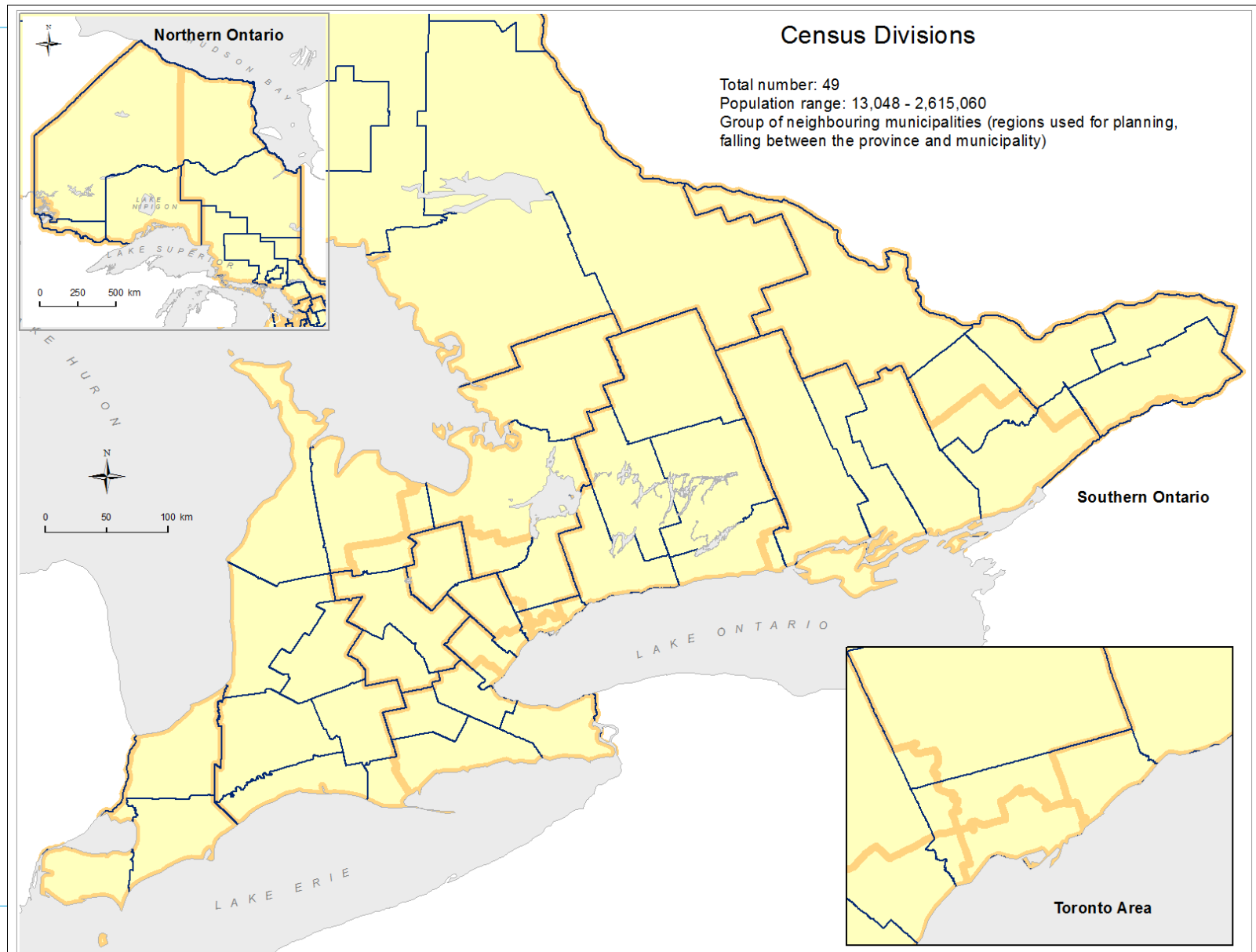
Standard Units – census based



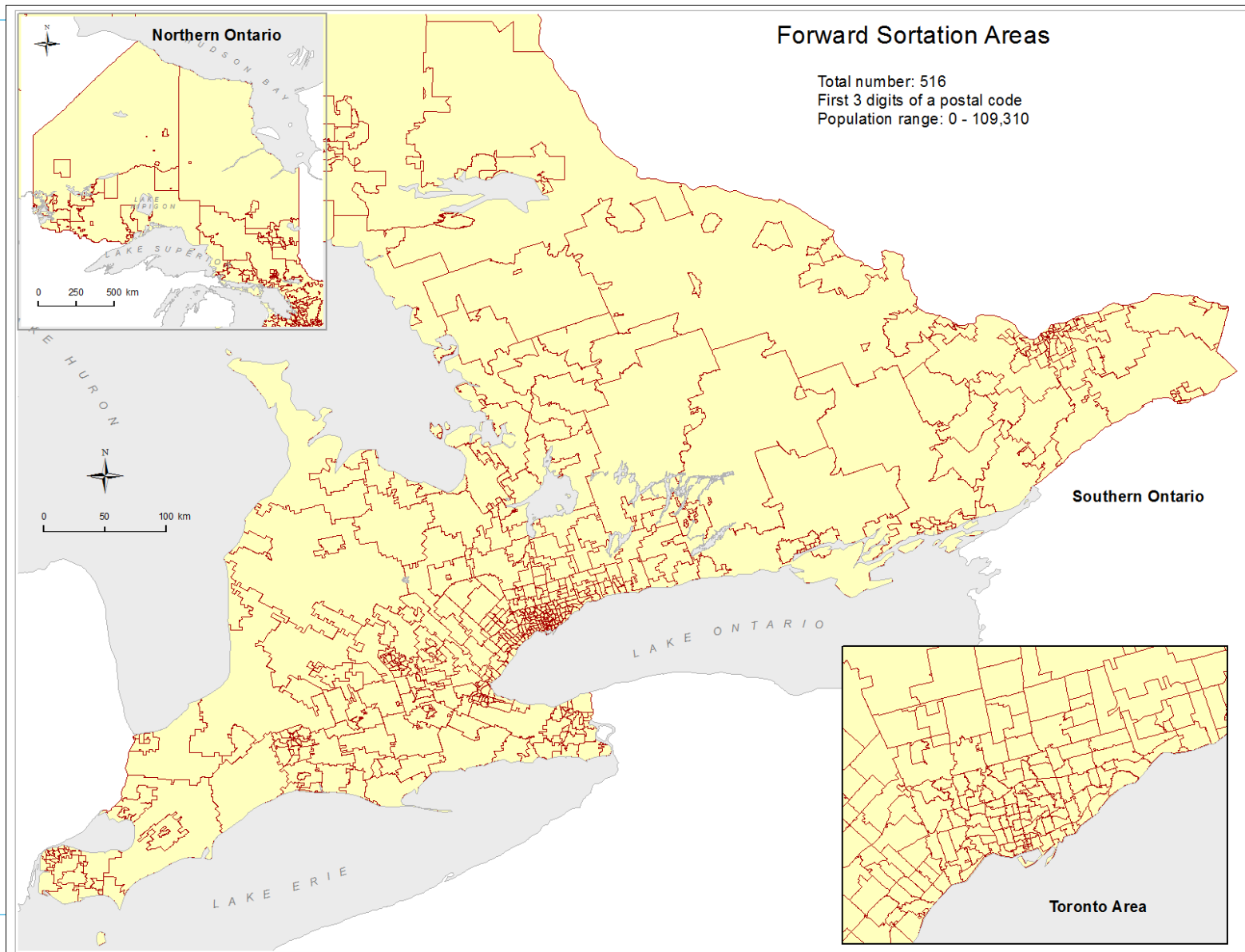
Standard Units – census based



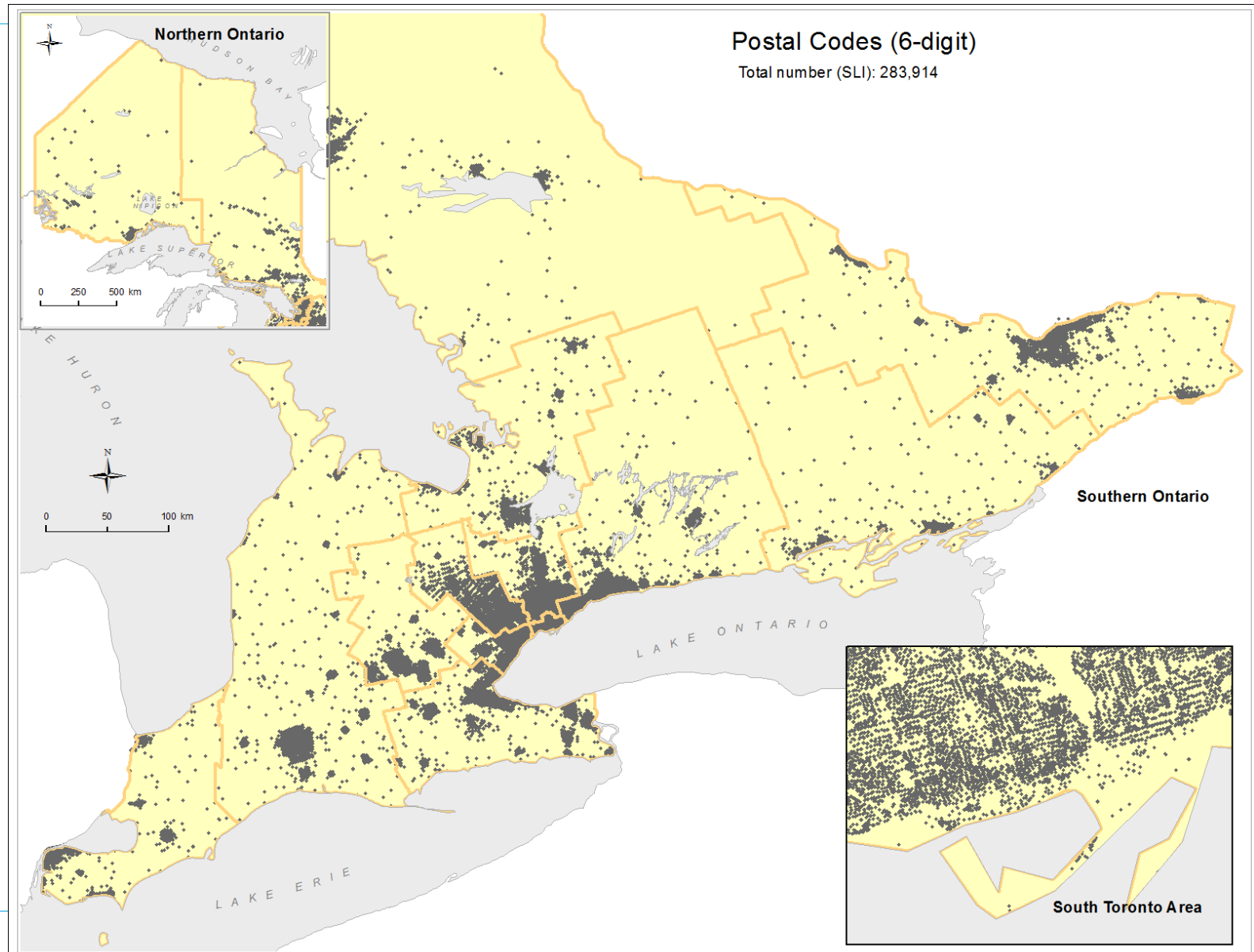
Standard Units – census based



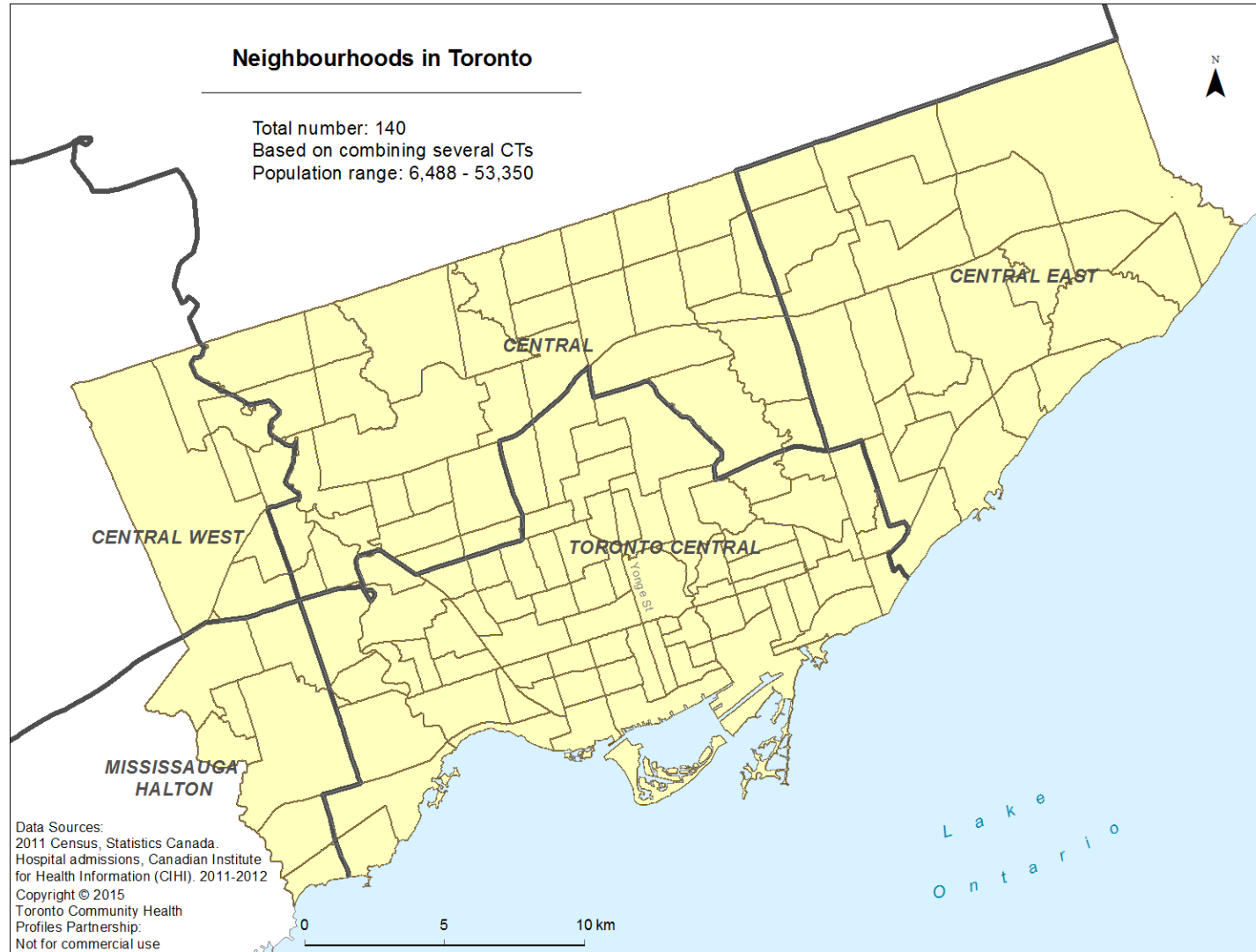
Standard Units – postal based



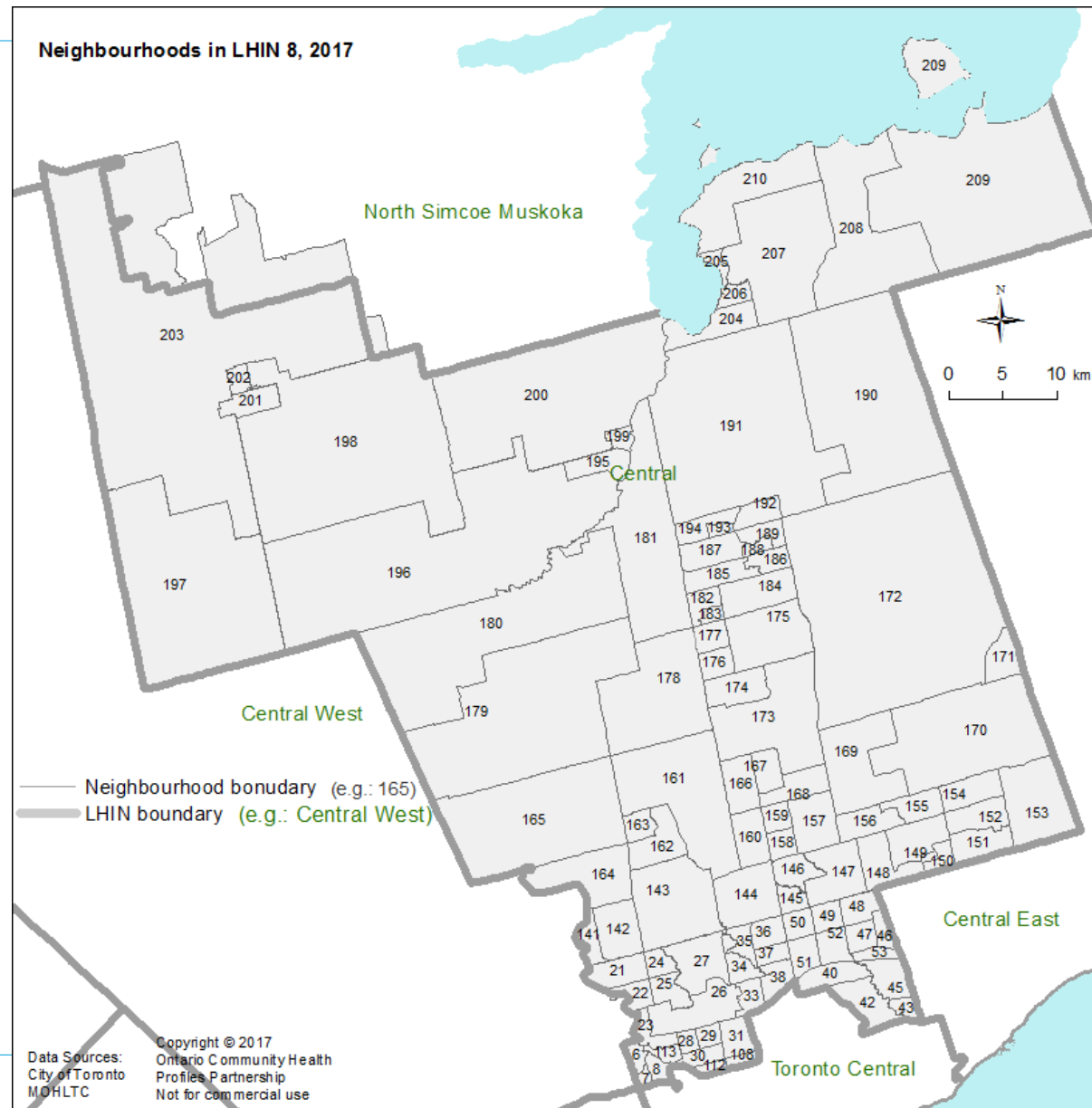
Standard Units – postal based



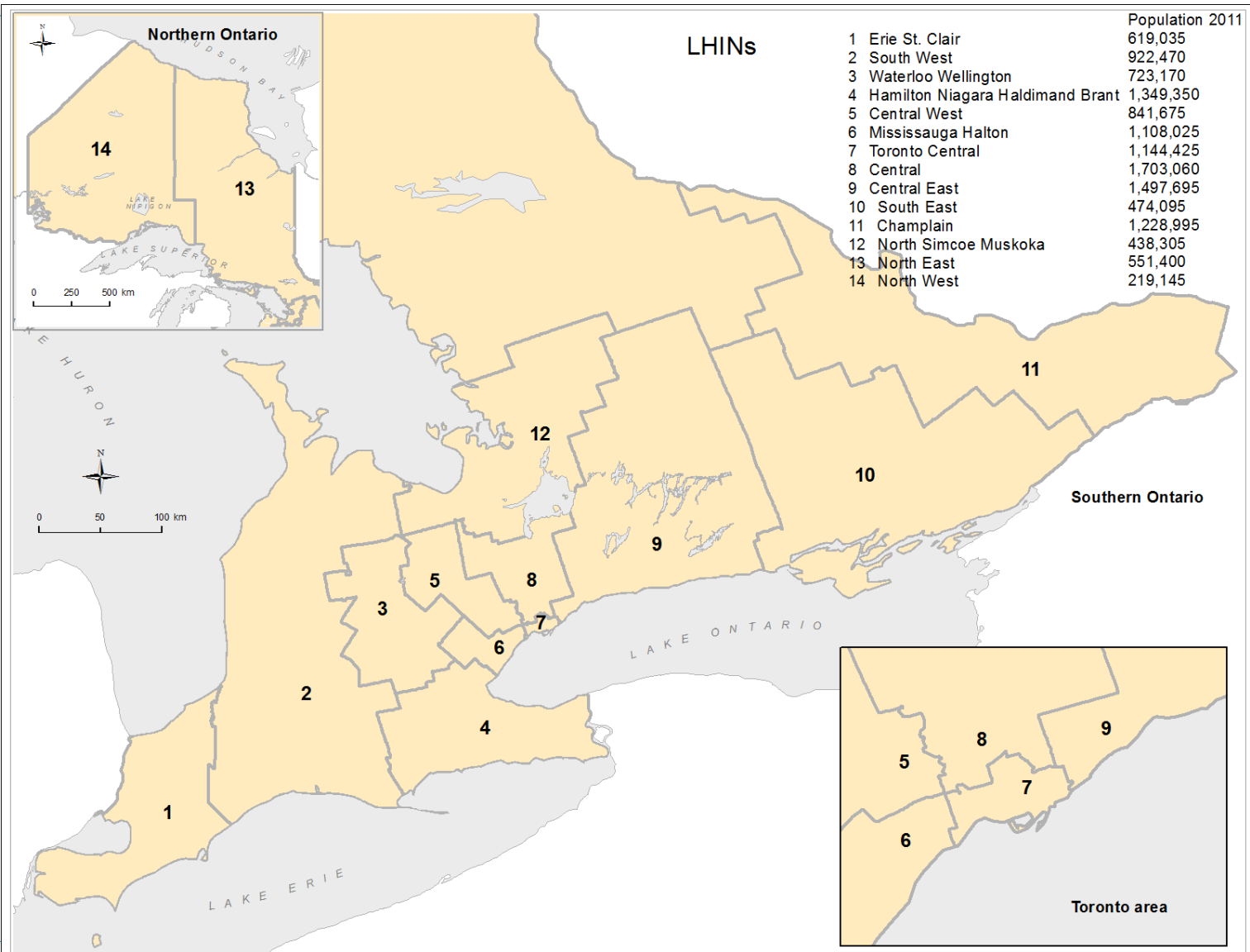
Standard Units – other



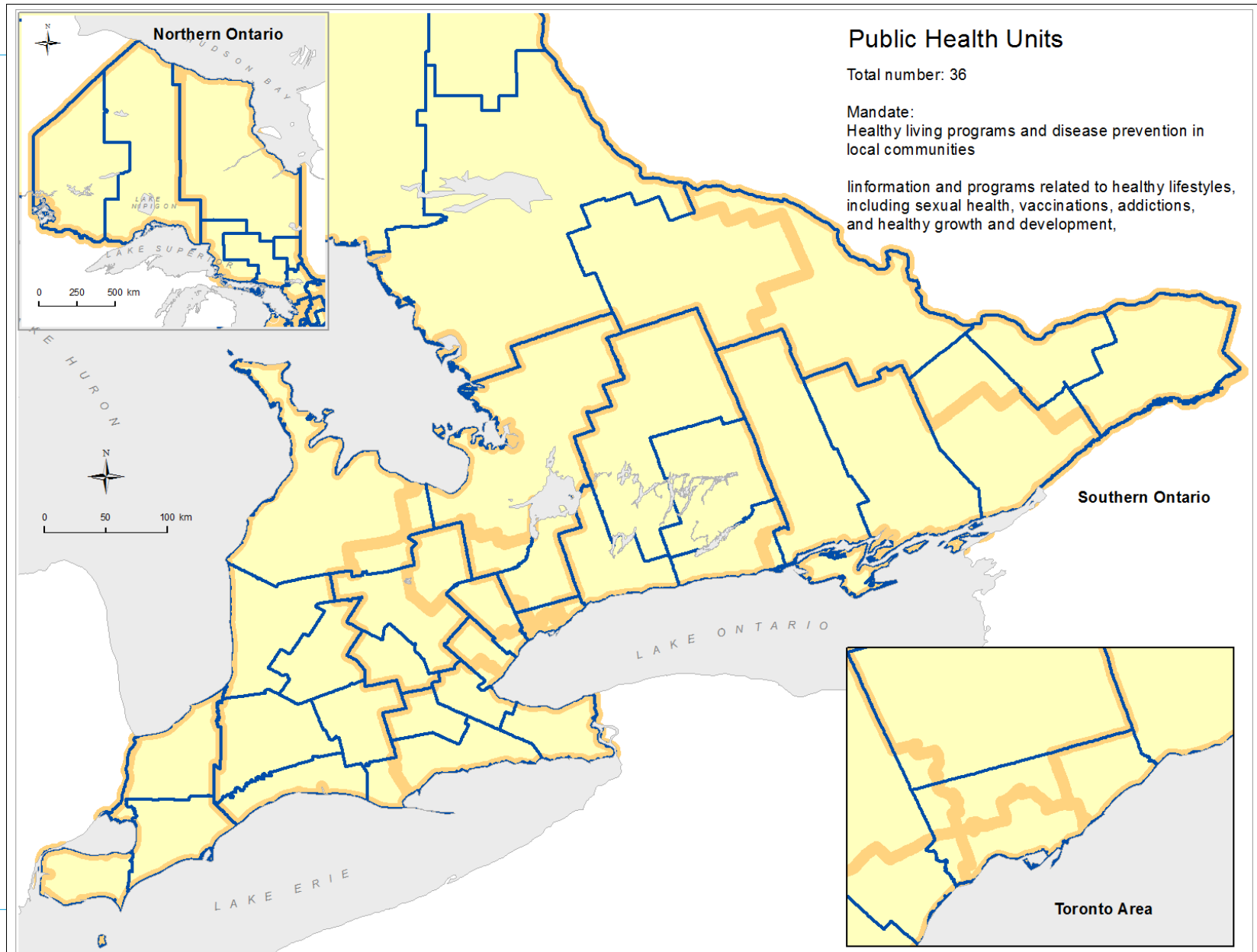
Standard Units – other



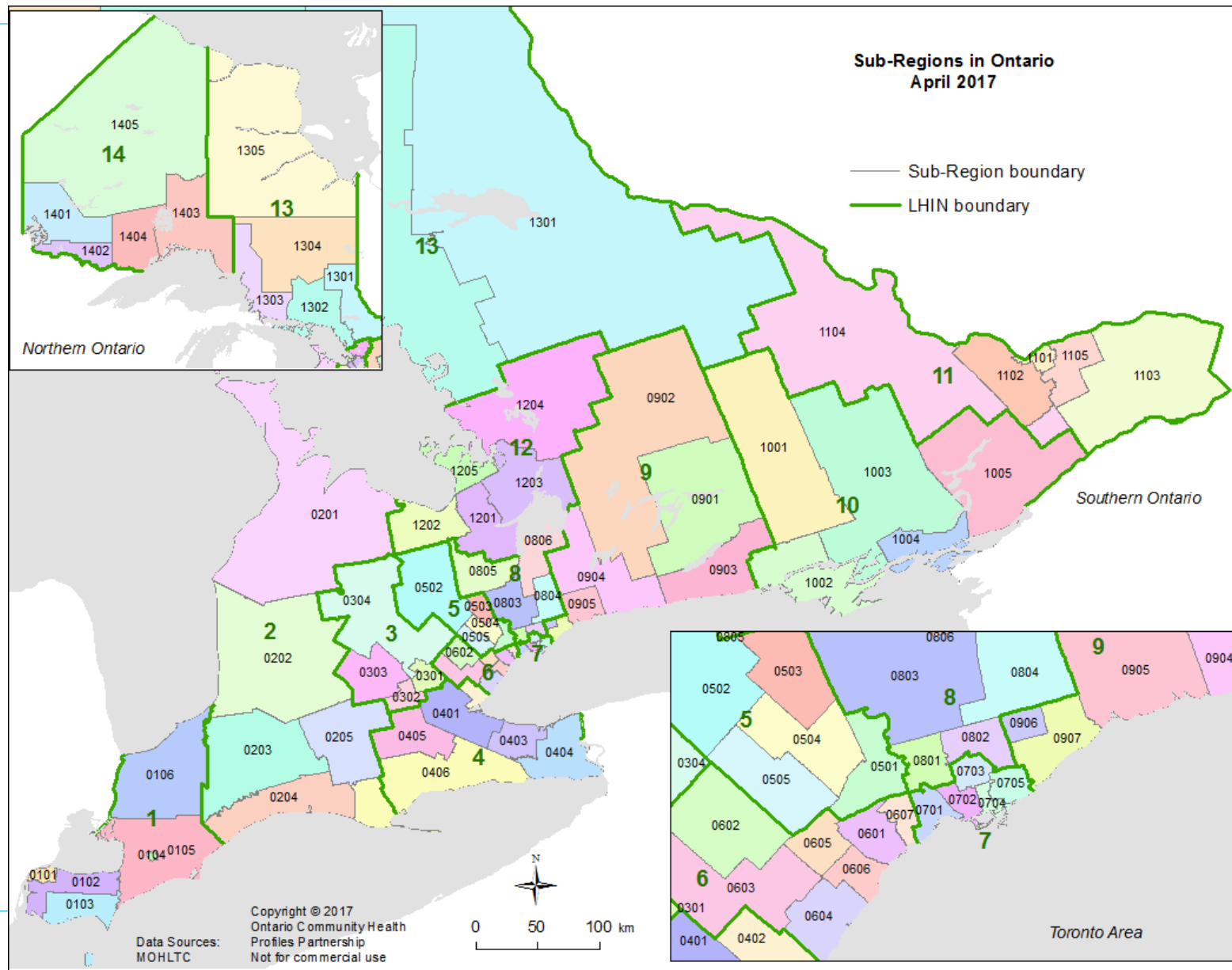
Standard Units – health based



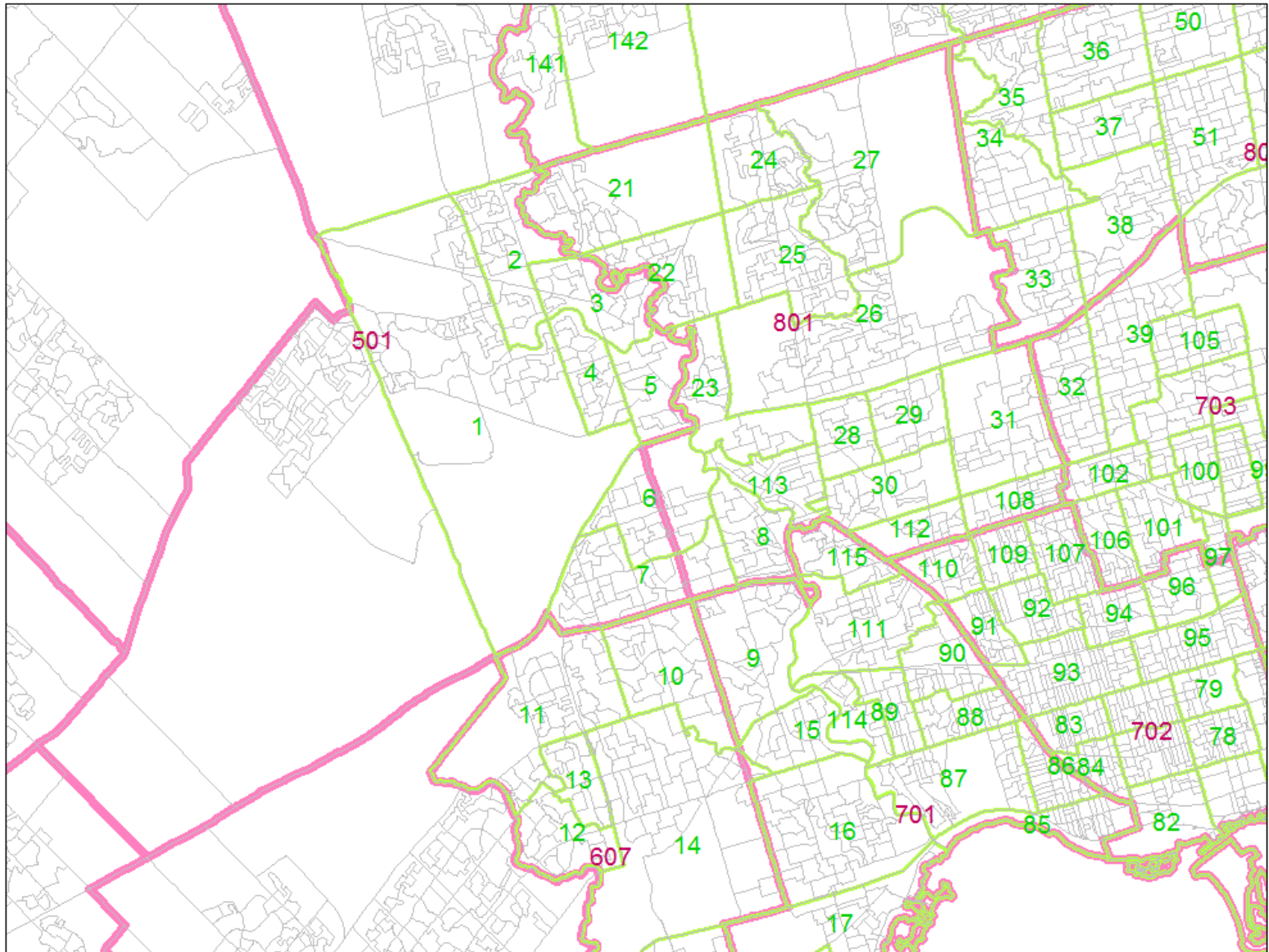
Standard Units – health based



New Geographic Units



Converting from DAs to Neighbourhoods and Sub-Regions





Questions?

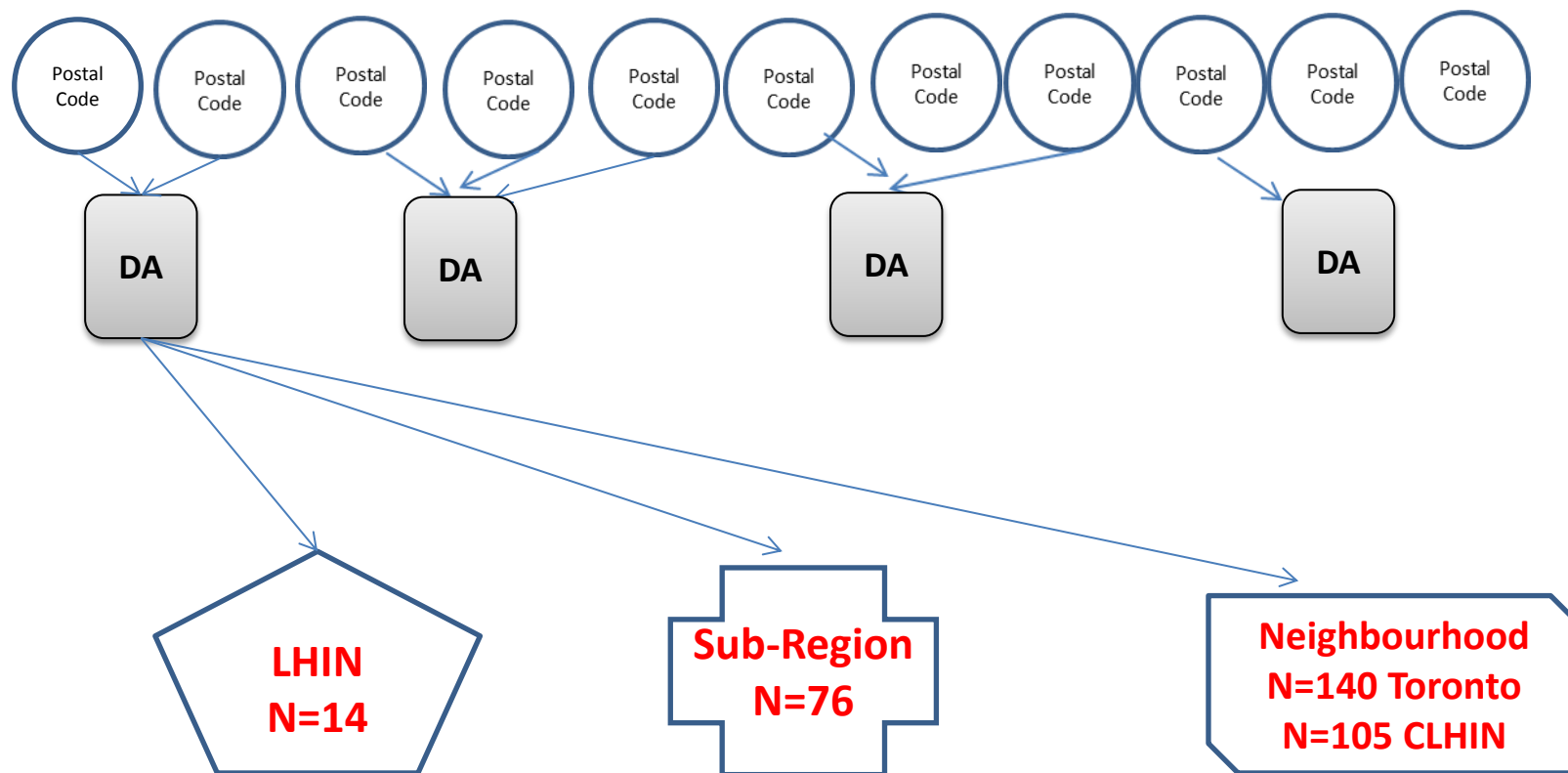


How do we link the health data to “place”

Mohammad Agha

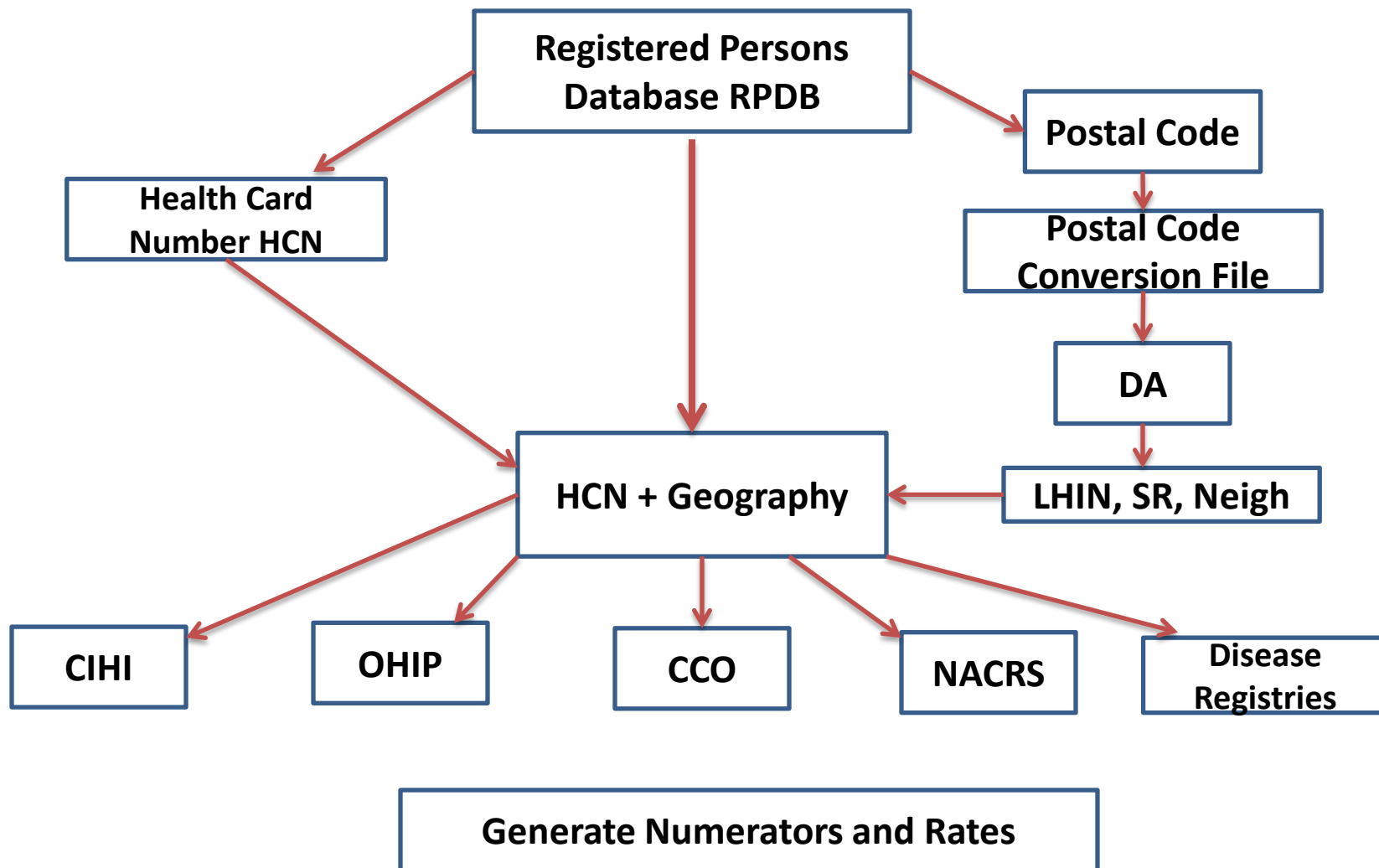


Main Components of Geography Assignment





Assigning Geography To ICES Data Sets





Data Linkages

Population Denominator Data

- All postal codes in Ontario are linked to a Dissemination Area (DA)
- The population for each DA is taken from Census Data
- The population for each geographical unit is estimated by summing DA populations in each geography
- Groups of DAs make up larger geographical units - Example:
 - **LHINs**
 - **Sub-Regions**
 - **Neighbourhoods**



Example: Prevalence of Cancer by Neighbourhood in Toronto

1. Select all cancer cases in CCO database including Health Card Number (HCN)
2. Using the HCN, link individuals in the RPDB → Assign individuals to a postal code
3. Using the postal codes, assign a geography, i.e. Toronto neighbourhood #62, to individuals
4. Sum cancer cases for each neighbourhood
5. Calculate prevalence rates for each neighbourhood
6. Same methods used for generating data for LHINs and Sub-Regions (based on defined geographies and postal codes)



Questions?



Ontario Community Health Profiles Partnership (OCHPP) Website

**Demonstration of the OCHPP site
Anne-Marie & Nadiya +Team**



www.ontariohealthprofiles.ca



OCHPP Website

- Freely accessible
- Open portal
- Frequent updates
- Easy to read and download tables & maps
- Data standards
- Data documents
- Collaboration
- Custom geography for partners
- Resources



Questions?



Thank You For Listening!