



Partnering for Better Health

Jan 2019

**PHS
LAB**
POPULATION HEALTH SOLUTIONS



Population Health Solutions Lab

Making it easy to collaborate across sectors

Creating solutions that improve the health of people in our communities



Working locally to prototype 'ground up' solutions

Starting points...three simple ideas

Critical importance of NEIGHBOURHOOD-LEVEL DATA for meaningful analysis of population health

Need for planning tools that BRING TOGETHER POPULATION HEALTH and HEALTH SERVICE DATA to understand local needs

Need for better visualization tools to TELL THE STORY OF OUR COMMUNITIES and build capacity of local partners



Helping communities see themselves in the data

The experience of local communities can be hidden in regional or provincial data

Understanding who lives here, and how that changes over time

Integrating multiple perspectives & sectors to inform and inspire innovative decision-making

Neighbourhood-level Data

Who lives in a community?

How do social determinants impact the experience of those living here?



What health services are accessed here?

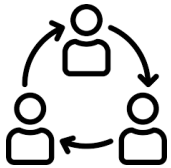
What are the local gaps in services?

What risk factors influence this community the most?

The Project



Fast-track development of small area geographies to increase the visibility of local communities in Ontario



Build capacity for LHINs, PHUs, and local partners to work collaboratively (with support from provincial experts)



Get neighbourhood-level data to decision makers and health system planners

Our Partners

DEVELOPMENT PARTNERS:

Population Health Analytics Lab (UofT)

Ontario Community Health Profiles Partnership (OCHPP)

OTHER PARTNERS:

MOHLTC Health Analytics Branch

Office of the CMOH

LHIN-PH Indicators Committee (PHISPHLC)

CIHI

CAMH

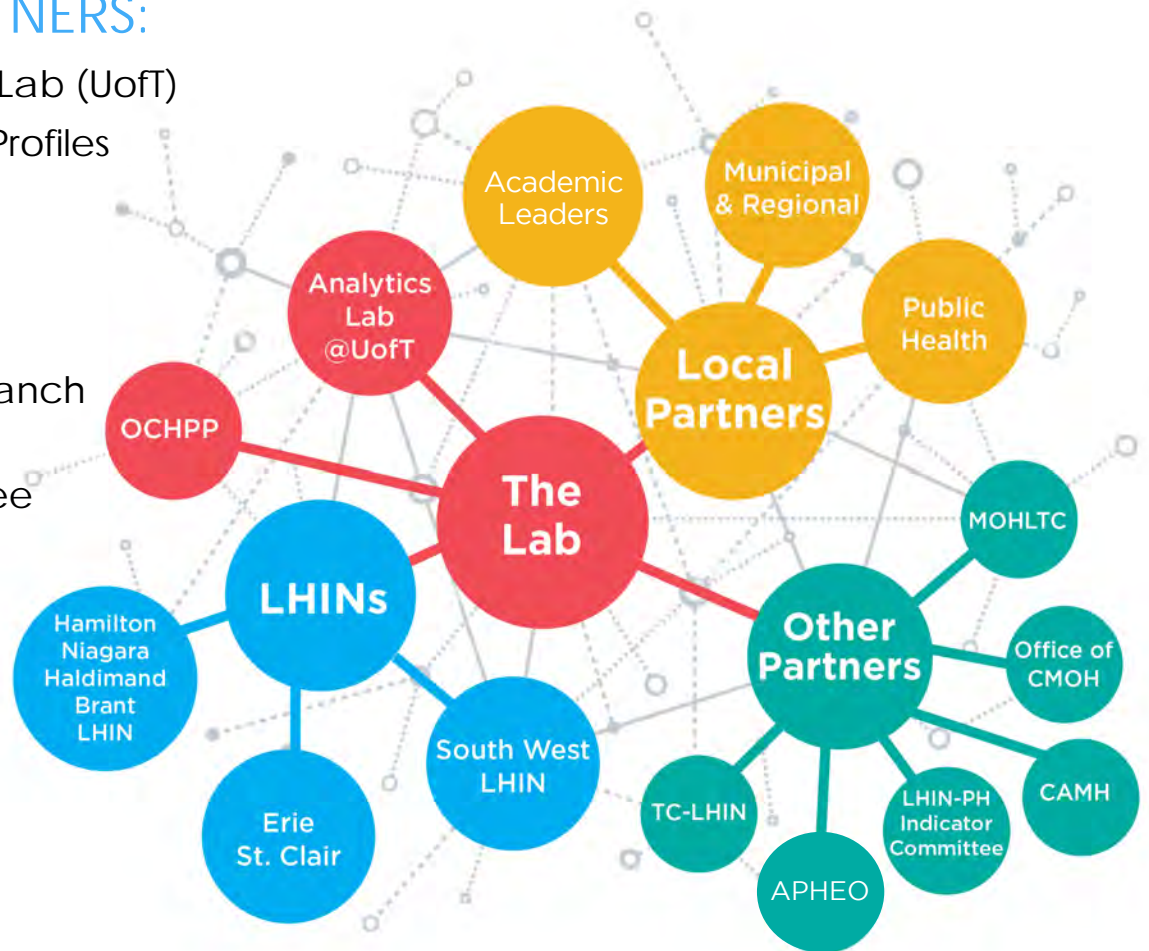
Toronto Central LHIN

LHINs:

HNHB LHIN

Erie St. Clair LHIN

South West LHIN

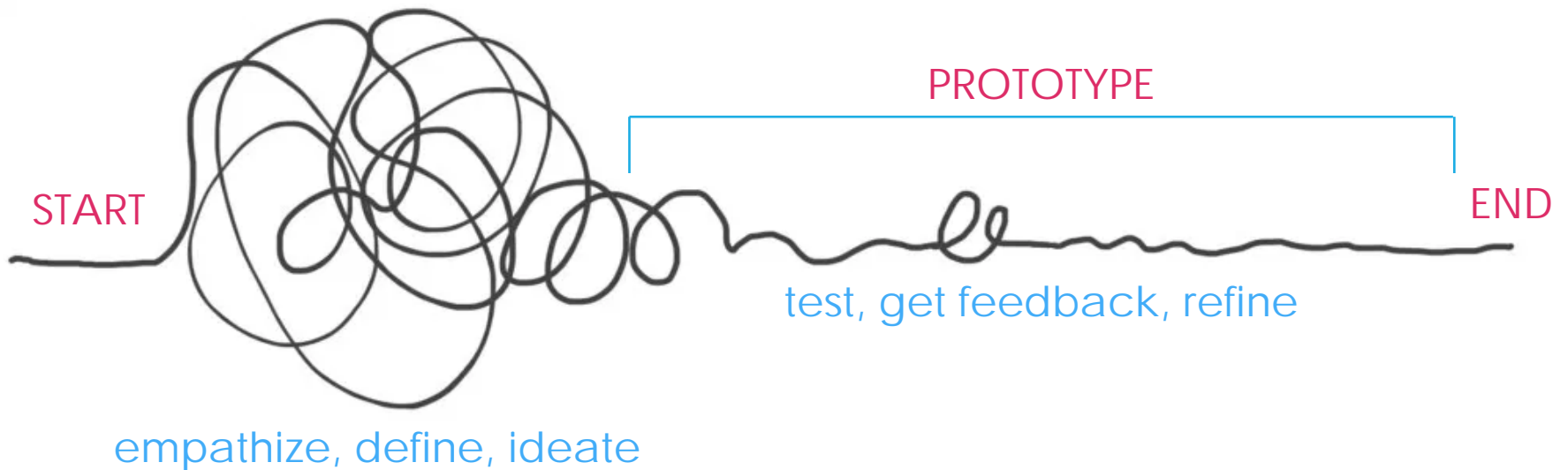


Foundational Principles



- Neighbourhoods will be meaningful to local stakeholders for the purpose of system planning.
- Leverage existing work and local expertise when creating neighbourhoods.
- Use Census geographies as the building blocks for neighbourhoods.
- Ideally, neighbourhoods will have a population size of no less than 7,000 and no more than 50,000.
- A separate and unique engagement process with Indigenous communities.

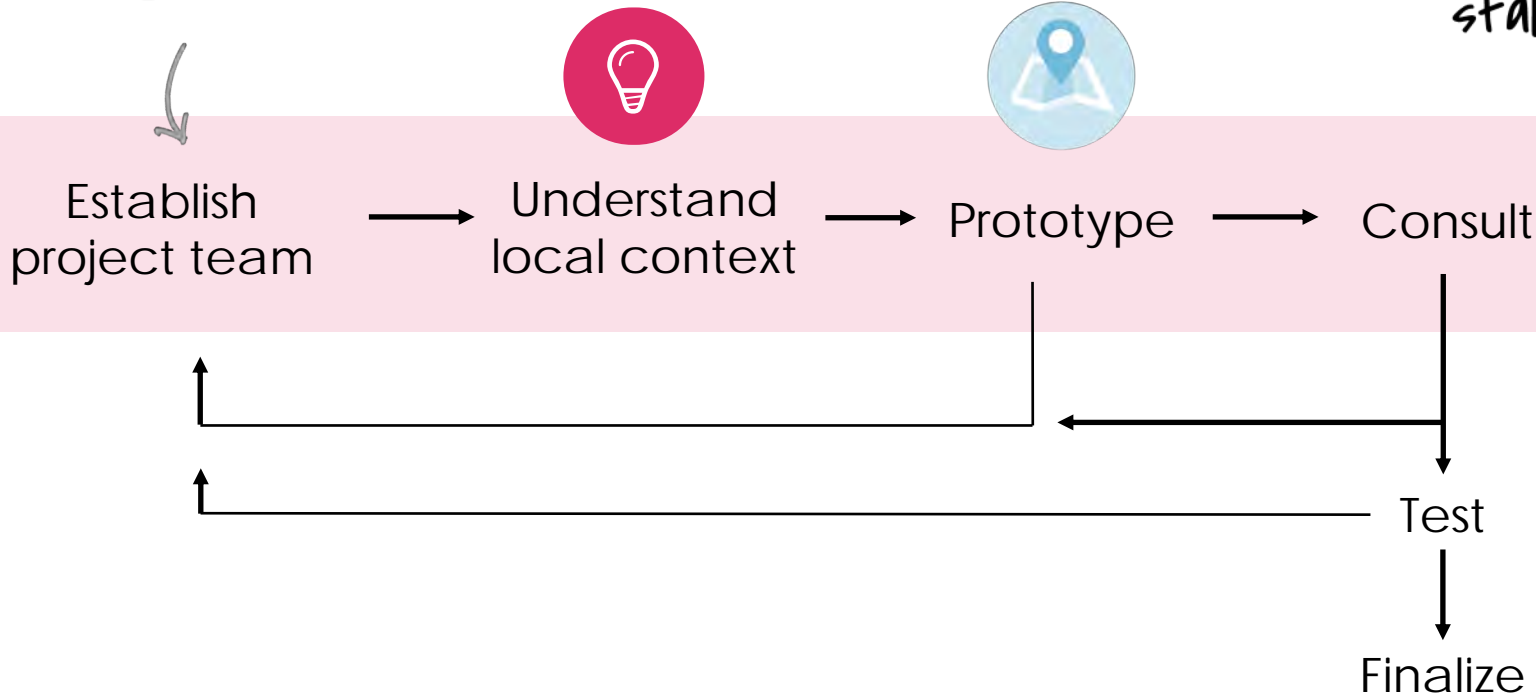
Design Thinking



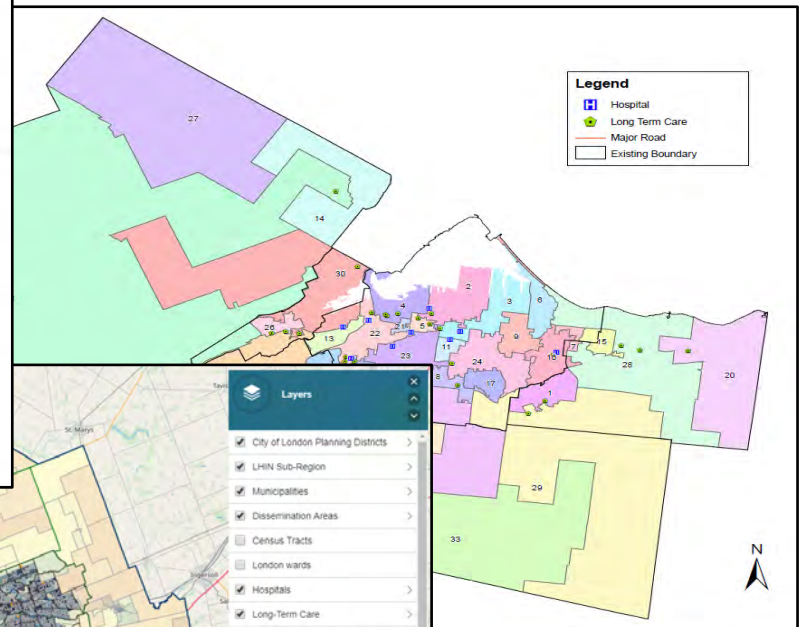
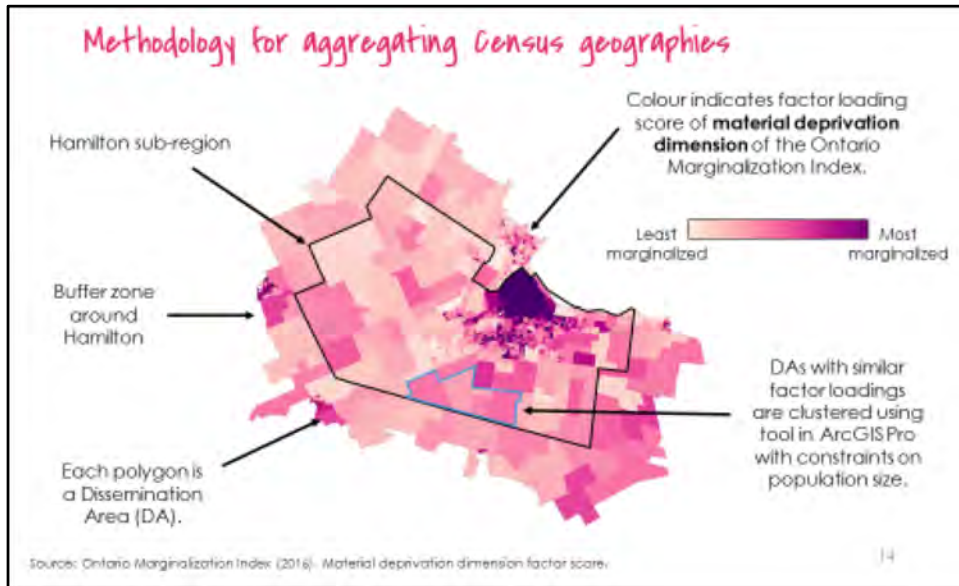
Our Process

Tap into local data and mapping expertise...

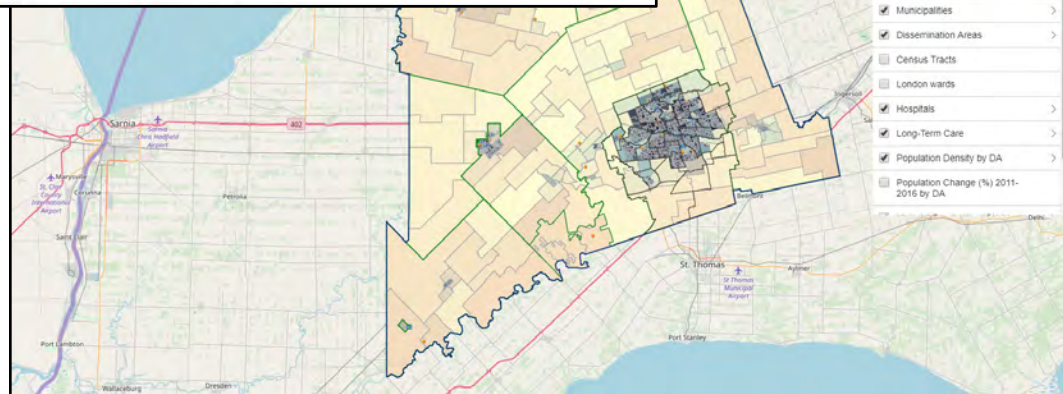
... then get feedback on maps from a broad range of stakeholders.



Prototyping Solutions



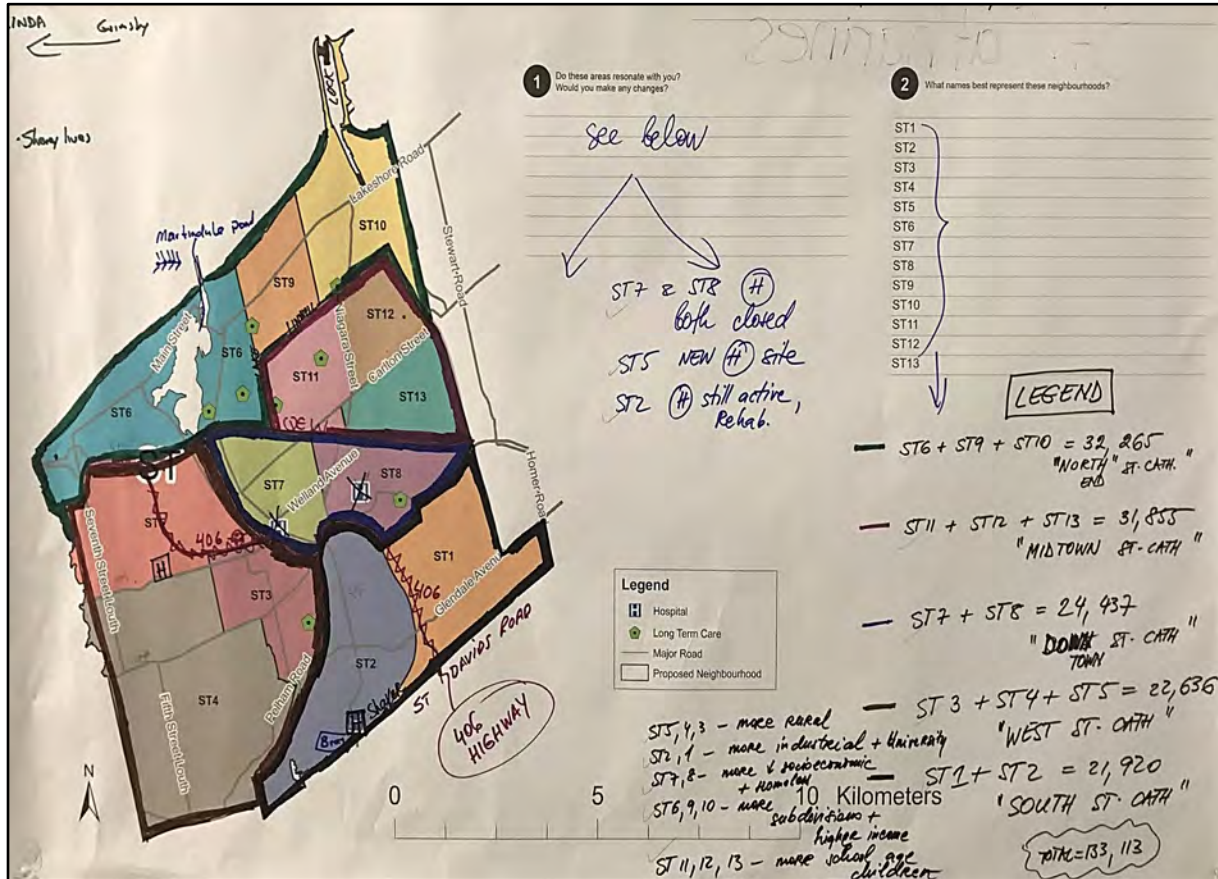
Methodology



South West LHIN Web Tool

Co-designed Prototypes

Getting Feedback

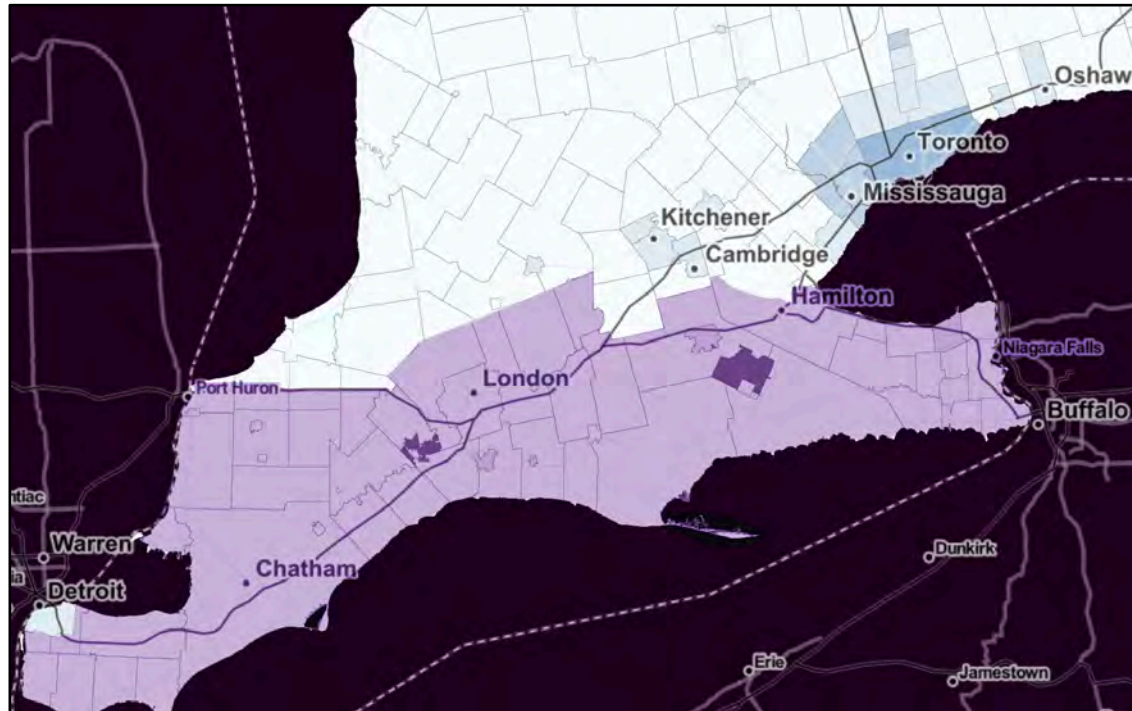


Niagara Consultation



Brant Consultation

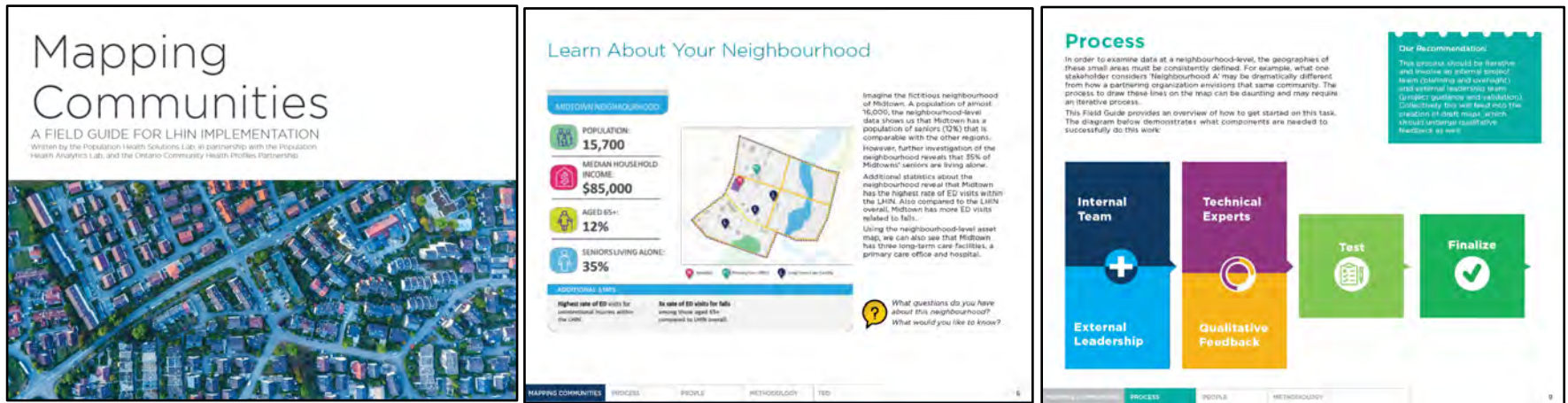
The Lab's work in early 2019...



We are partnering with 3 LHINs to this this work, including:

- 6 sub-regions in prototype phase
- 2 sub-regions in consultation phase
- 4 sub-regions in the finalize phase

What's Next?



We are developing a Field Guide.

This will be a publicly available resource that outlines the process, our learnings, and recommendation on best practices for organizations who want to create neighbourhood geographies in their own community.

Contact Us

Kandace.Ryckman@sinaihealthsystem.ca

Population Health
Solutions Lab

