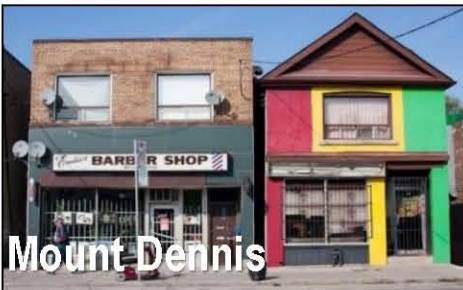




# **An example of how the data can be used for presentation and planning**

## **West Sub-Region Toronto**

## About the West Toronto Sub-Region



- Bounded by Eglinton Ave. West to the north, the Canadian National Railway to the East, Lake Ontario to the south, Islington Ave. (North) and Kipling Ave (South) to the West.
- The region contains 14 neighbourhoods and a very small proportion of one neighbourhood (Islington City Centre West). There are 3 designated neighbourhood Improvement Areas (Mount Dennis, South Parkdale, and Rockcliffe Smythe) along with higher-income neighbourhoods such as Kingsway South and Runnymede Bloor West Village.
- *Please note:* Islington City Centre West has not been included in this profile as the majority is located in Mississauga Halton LHIN. Also, Edenbridge-Humber Valley has a small portion that lies in Central LHIN.



# West Toronto Neighborhoods (2016)

Population (2011)

**232,570**

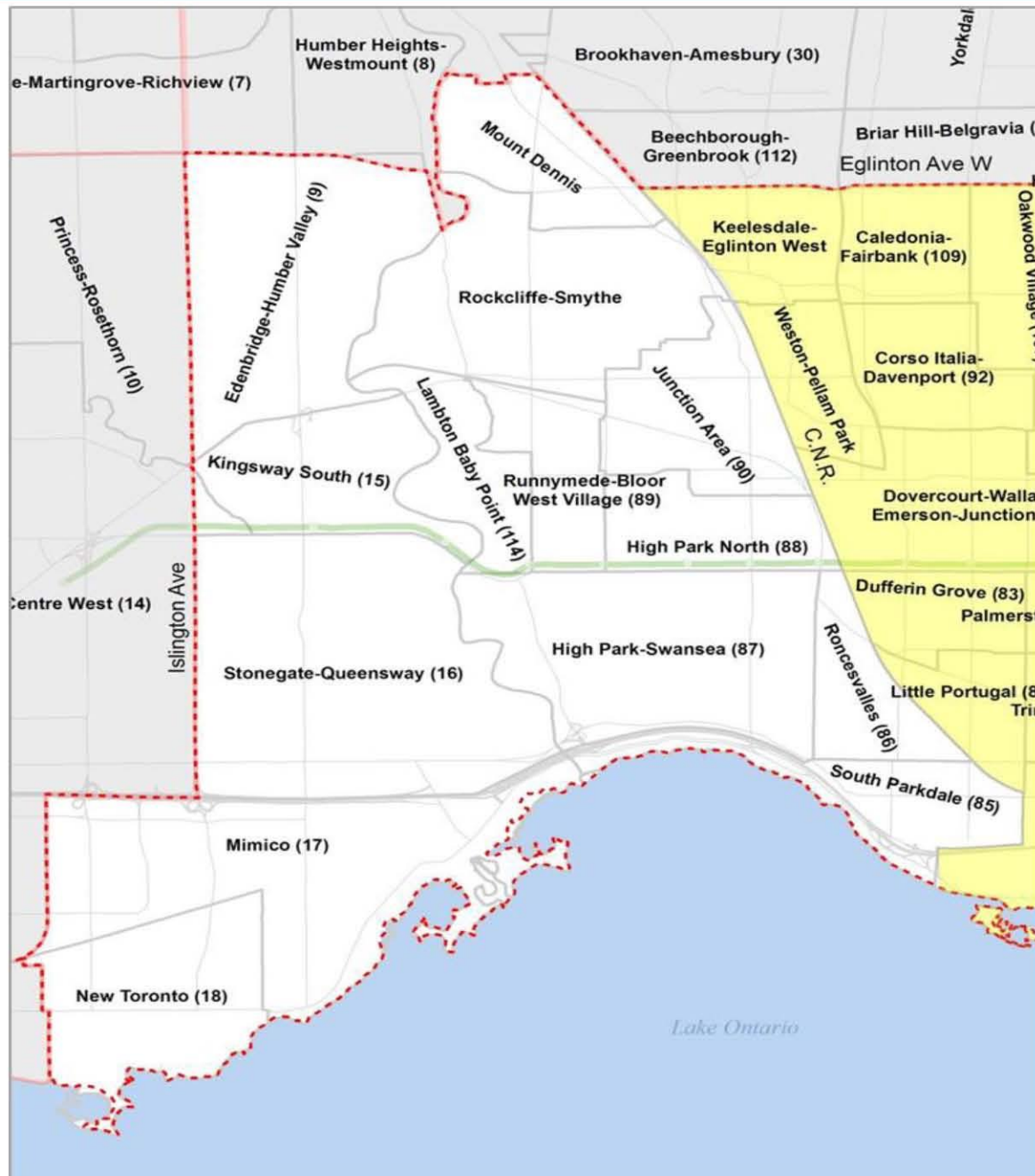
(20.4% of TC LHIN)

Males: **48.2%**

Females: **51.8%**

% Children and Youth (ages 0-19): **20%**

% Seniors (ages 65+): **13.7%**





# **A closer look at the West Sub-Region**

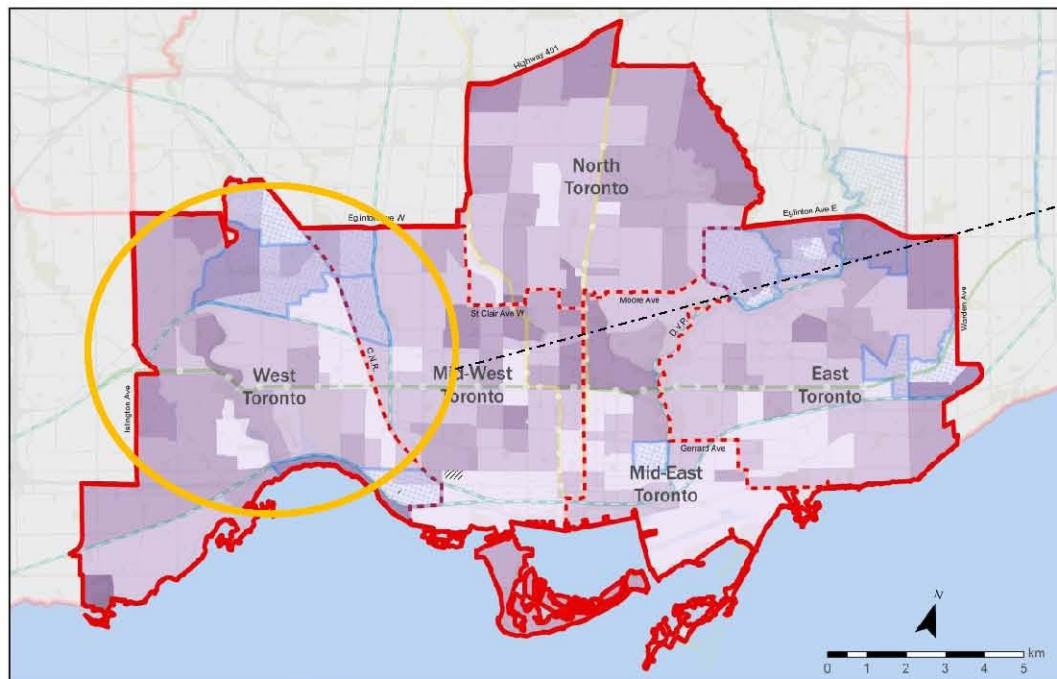




# West Toronto: Population Summary by Neighbourhood (2011)

	Total Population				Children/Youth			Seniors				
	Population Male	Population Female	Total Population (Both Sexes)	% change in population count 2006-2011, Both sexes	% of Total population that are age 0-19	% change in the 0-19 population (count), 2006-2011	% of families with children that are headed by a lone parent in private households	Total Population Age 65+, Both sexes	% of Total population that are age 65+, Both sexes	% change in the 65+ population (count), 2006-2011, Both sexes	Age 65+ living alone, Both sexes	% of Total population in private households that are 65+, living alone, Both sexes
Edenbridge-Humber Valley	7,075	7,865	14,945	3.40%	20.6%	-3.6%	26.2%	2,815	18.8%	10.6%	695	25.9%
High Park North	10,100	11,190	21,300	1.6%	16.2%	2.8%	29.5%	2,550	12.0%	-3.0%	970	41.4%
High Park-Swansea	10,030	11,720	21,750	8.8%	19.0%	11.3%	27.0%	3,385	15.6%	3.7%	1,080	36.3%
Junction Area	6,820	7,210	14,015	6.4%	20.1%	-2.8%	31.8%	1,320	9.4%	14.8%	280	22.9%
Kingsway South	4,330	4,845	9,175	4.6%	24.5%	1.6%	17.5%	1,720	18.7%	9.6%	420	25.9%
Lambton Baby Point	3,695	4,220	7,920	1.7%	26.5%	4.5%	32.7%	905	11.4%	-3.7%	275	30.6%
Mimico	12,925	13,625	26,550	6.3%	14.9%	-1.9%	37.0%	3,920	14.8%	16.5%	1,465	37.9%
Mount Dennis	6,210	6,935	13,150	2.4%	25.7%	-7.4%	47.1%	1,490	11.3%	14.2%	325	26.0%
New Toronto	5,300	5,600	10,905	2.4%	19.3%	-7.5%	43.3%	1,490	13.7%	5.3%	600	44.8%
Rockcliffe-Smythe	10,750	11,520	22,270	-0.5%	23.6%	-5.9%	38.9%	3,410	15.3%	0.9%	1,255	36.8%
Roncesvalles	7,430	7,620	15,050	2.7%	20.1%	6.1%	30.1%	1,620	10.8%	-3.9%	580	35.9%
Runnymede-Bloor West Village	4,565	5,065	9,635	0.8%	24.0%	1.5%	22.3%	1,080	11.2%	-5.3%	255	23.5%
South Parkdale	10,810	10,435	21,245	1.1%	16.3%	-11.0%	42.8%	2,225	10.5%	0.7%	895	48.9%
Stonegate-Queensway	11,935	12,745	24,690	3.7%	21.0%	5.3%	26.8%	3,975	16.1%	-3.3%	1,110	28.5%
<b>Toronto Central LHIN</b>	<b>557,565</b>	<b>592,995</b>	<b>1,150,555</b>	<b>5.6%</b>	<b>18.7%</b>	<b>-0.8%</b>	<b>31.7%</b>	<b>150,965</b>	<b>13.1%</b>	<b>7.1%</b>	<b>47,850</b>	<b>34.1%</b>

# West Toronto: Population of Seniors Age 65+ (2011)



Percentage of Seniors Over 65 [no. census tracts]

40.1% to 80.0% [2]  
20.1% to 40.0% [23]  
15.1% to 20.0% [51]  
10.1% to 15.0% [120]  
less than 10.1% [53]

No data [2]

Sub-LHIN Regions

Toronto Central LHIN

Other LHINs

Neighbourhood Improvement Area

Road

TTC Subway / SRT

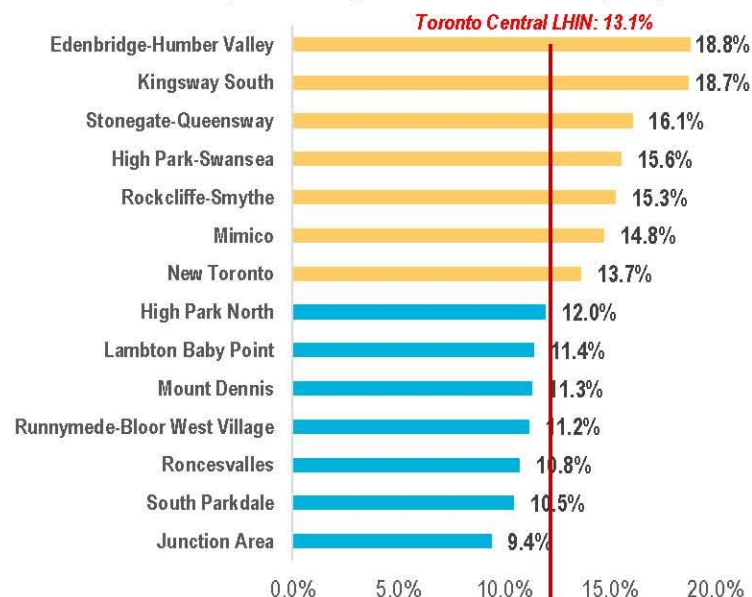
GO Transit

Parks and Green Space

Sources: Toronto Central LHIN; Statistics Canada; City of Toronto.

Overall, 13.7% of the West Toronto population is **over 65 years** (2011). This is **slightly above the Toronto Central LHIN average population**, currently at 13.1%.

% of Total Population, Ages 65+, Both Sexes, (2011)



The proportion of seniors among West Toronto neighbourhoods ranges from 9.4% to 18.8%.

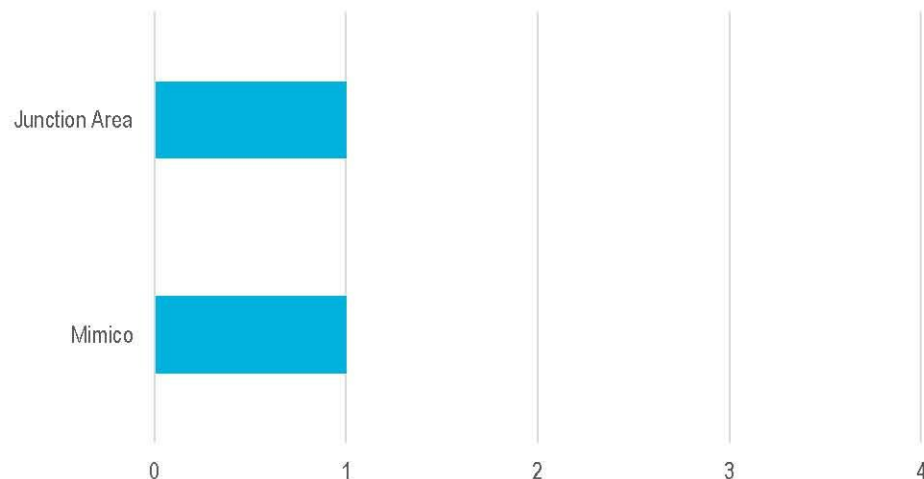
Half of the neighbourhoods have a higher than average proportion of seniors in their neighbourhoods.

**Kingsway South and Edenbridge-Humber Valley** have the highest proportion of seniors in West Toronto Sub-region.

# West Toronto: Homeless Population



Number of Shelters in West Toronto by Neighbourhood (2016)



West Toronto has **2** homeless shelters in (Mimico and Junction Area) in Toronto Central LHIN



When planning services for the homeless population, key considerations include:

- In 2013, the proportion of seniors doubled to 10% from 5% in 2009
- High representation of the Indigenous population (16%)
- Almost half (46%) used the emergency department
- Almost one third (26%) used ambulance services
- Higher prevalence of mental health and addictions
- Higher need for transportation services
- Poor data quality in existing databases





## West Toronto: Disease Prevalence Rates by Neighbourhoods (2014/15)

Age standardized Rates Neighbourhood	Diabetes (Ages 20+)	Asthma (Ages 20+)	High Blood Pressure (Ages 20+)	Mental Health Visits (Ages 20+)	COPD (Ages 35+)
Edenbridge-Humber Valley	8.10%	13.70%	20.20%	9.40%	7.50%
High Park North	6.00%	11.00%	16.40%	9.50%	7.00%
High Park-Swansea	5.90%	12.60%	16.90%	10.00%	6.90%
Junction Area	9.40%	13.90%	18.60%	10.30%	7.60%
Kingsway South	5.40%	13.90%	16.50%	8.70%	6.20%
Lambton Baby Point	7.50%	13.90%	18.60%	9.80%	7.10%
Mimico	8.30%	13.20%	19.80%	<b>10.70%</b>	10.20%
Mount Dennis	<b>13.10%</b>	<b>14.90%</b>	<b>23.60%</b>	9.70%	10.10%
New Toronto	9.70%	<b>15.10%</b>	<b>21.20%</b>	<b>10.90%</b>	<b>13.70%</b>
Rockcliffe-Smythe	<b>12.40%</b>	<b>16.90%</b>	<b>22.80%</b>	10.30%	10.20%
Roncesvalles	8.20%	13.20%	17.10%	10.00%	8.90%
Runnymede-Bloor West Village	7.20%	13.40%	17.60%	9.50%	6.60%
South Parkdale	<b>11.40%</b>	12.70%	19.40%	9.70%	<b>10.80%</b>
Stonegate-Queensway	7.30%	13.00%	19.90%	9.30%	8.40%
<b>WEST TORONTO</b>	<b>8.5%</b>	<b>13.4%</b>	<b>19.3</b>	<b>9.9%</b>	<b>8.8%</b>
<b>Toronto Central LHIN</b>	<b>8.4%</b>	<b>12.7%</b>	<b>18.3%</b>	<b>9.4%</b>	<b>8.6%</b>





## How planners use the data for decision-making

- To identify areas of need – rates of high disease, healthcare utilization, vulnerable populations, etc.
- To use this information to align resources or pinpoint priority areas **e.g. does this area need a diabetes education centre?**
- To decrease and eventually eliminate inequities within the population specific to health services (and ideally social determinants of health) e.g. **what are key issues in this neighbourhood that need to be addressed to reduce health inequities?**



**More sub-region “snapshots”  
can be found at:**

**[http://www.torontocentralhin.  
on.ca/forhsps/subregions.aspx](http://www.torontocentralhin.on.ca/forhsps/subregions.aspx)**