

## All attached patients attributed to Great River OHT (Regional View)



1 dot represents 10 patients



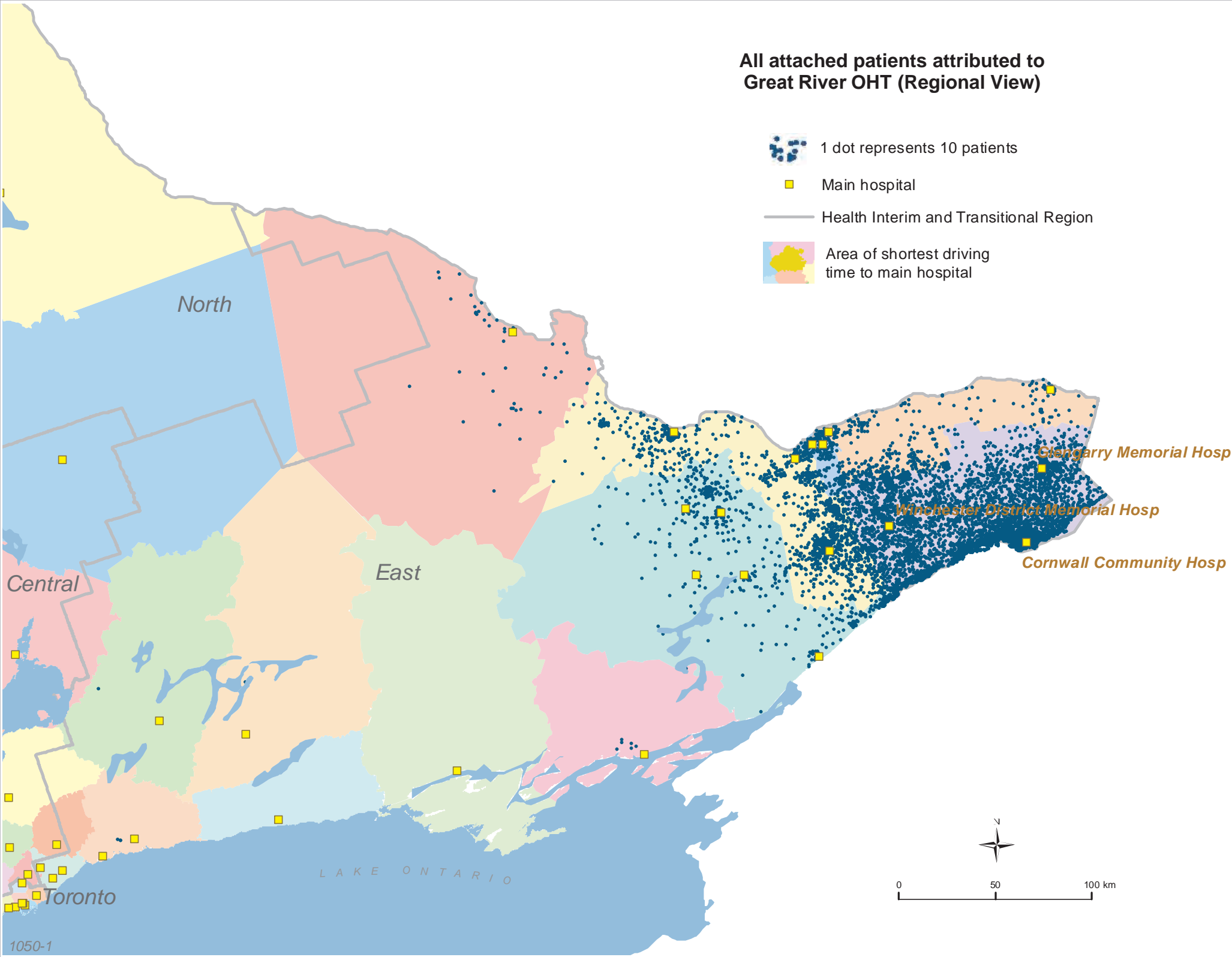
Main hospital







Health Interim and Transitional Region

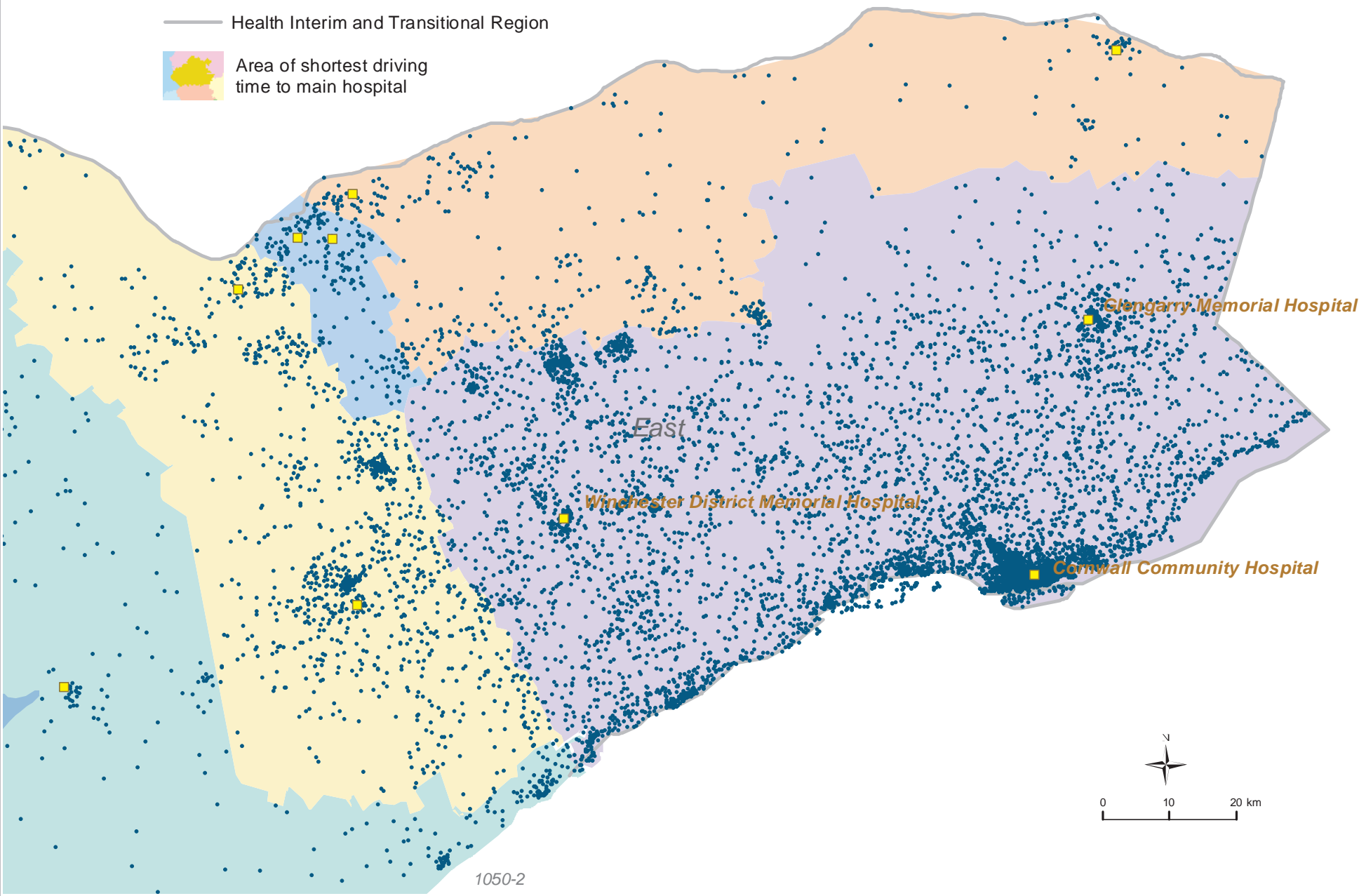


Area of shortest driving time to main hospital



All attached patients attributed to  
Great River OHT (Local View)

-  1 dot represents 10 patients
-  Main hospital
-  Health Interim and Transitional Region
-  Area of shortest driving time to main hospital



# Uncertainly attached patients attributed to Great River OHT (Regional View)



1 dot represents 10 patients



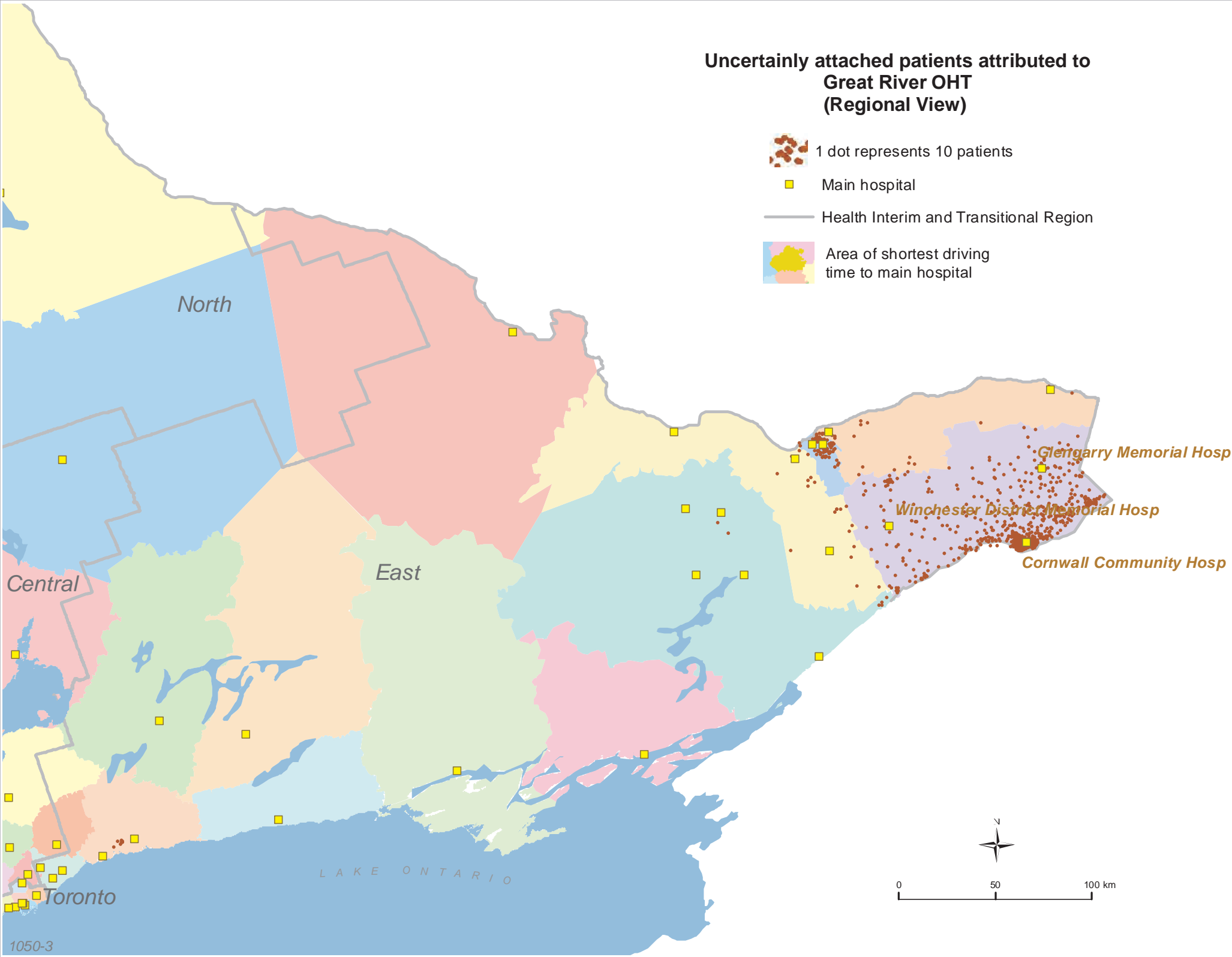
Main hospital



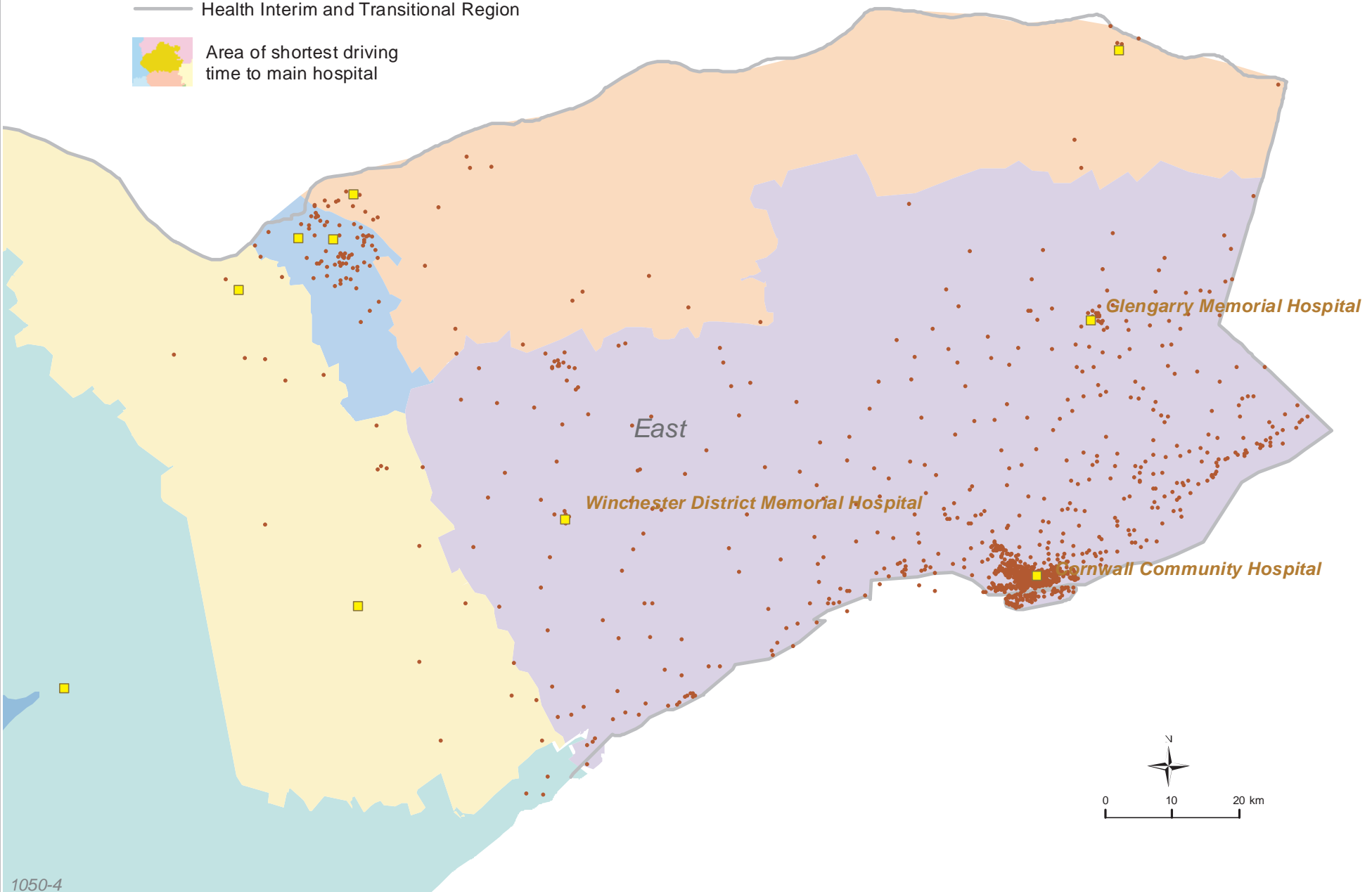
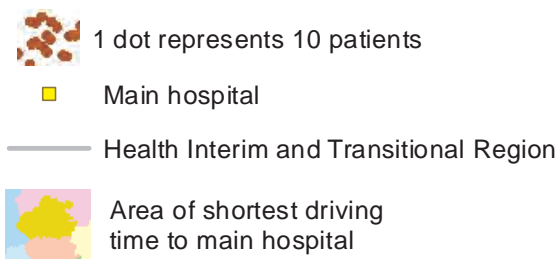
Health Interim and Transitional Region



Area of shortest driving  
time to main hospital



Uncertainly attached patients attributed to  
Great River OHT  
(Local View)



**Uncertainly Attached Patients Attributed  
to Ontario Health Teams (OHT) Other Than  
Great River OHT  
(Local View)**



1 dot represents 10 patients



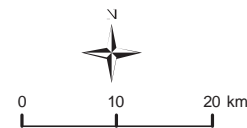
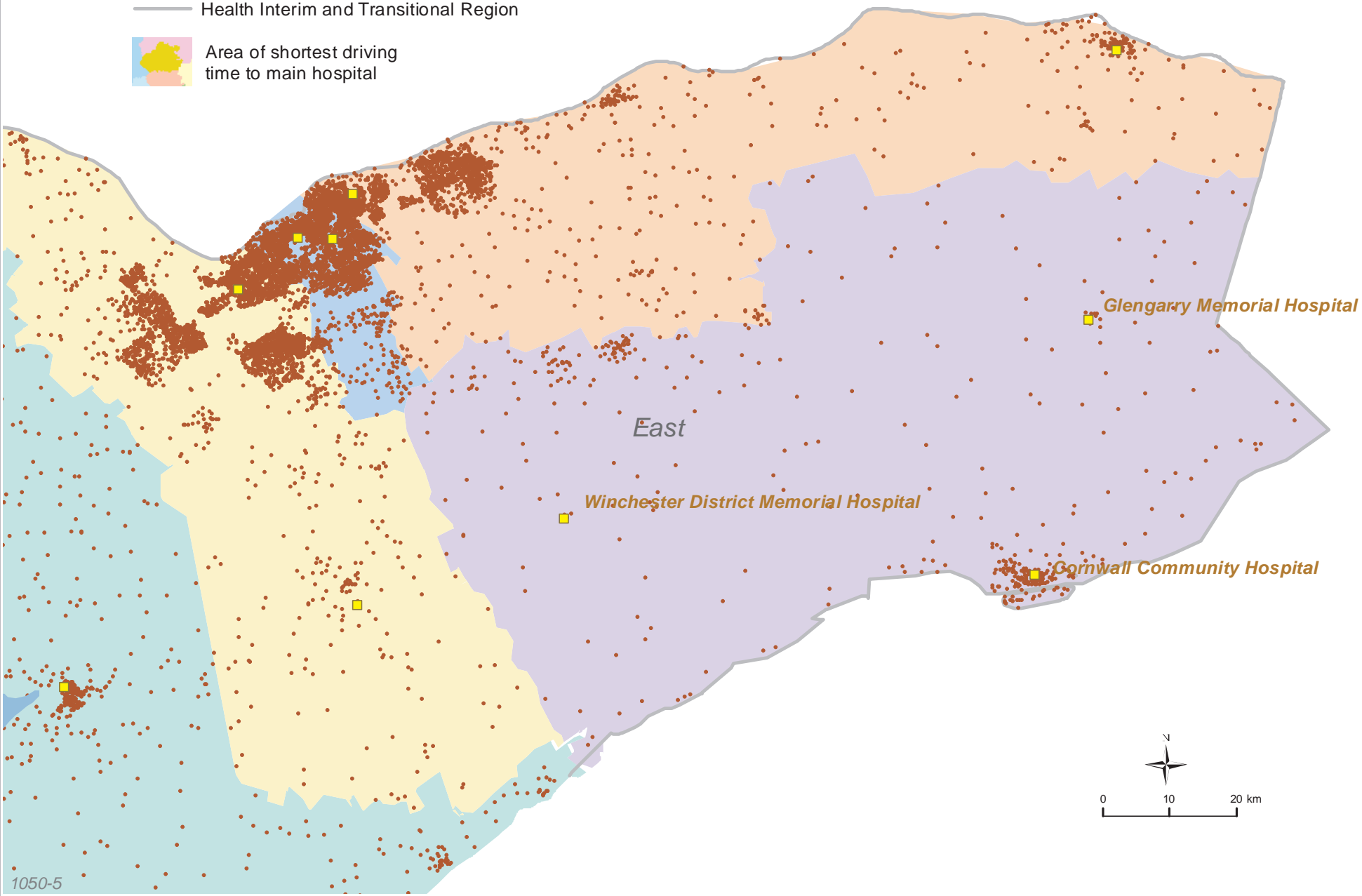
Main hospital



Health Interim and Transitional Region



Area of shortest driving  
time to main hospital



1050

Great River OHT

All attributed patients	114497
Attributed patients attached to primary care	14491
Attributed patients uncertainly attached to primary care	128988