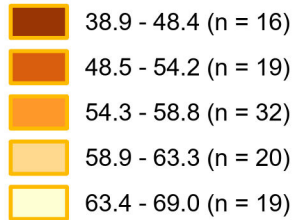


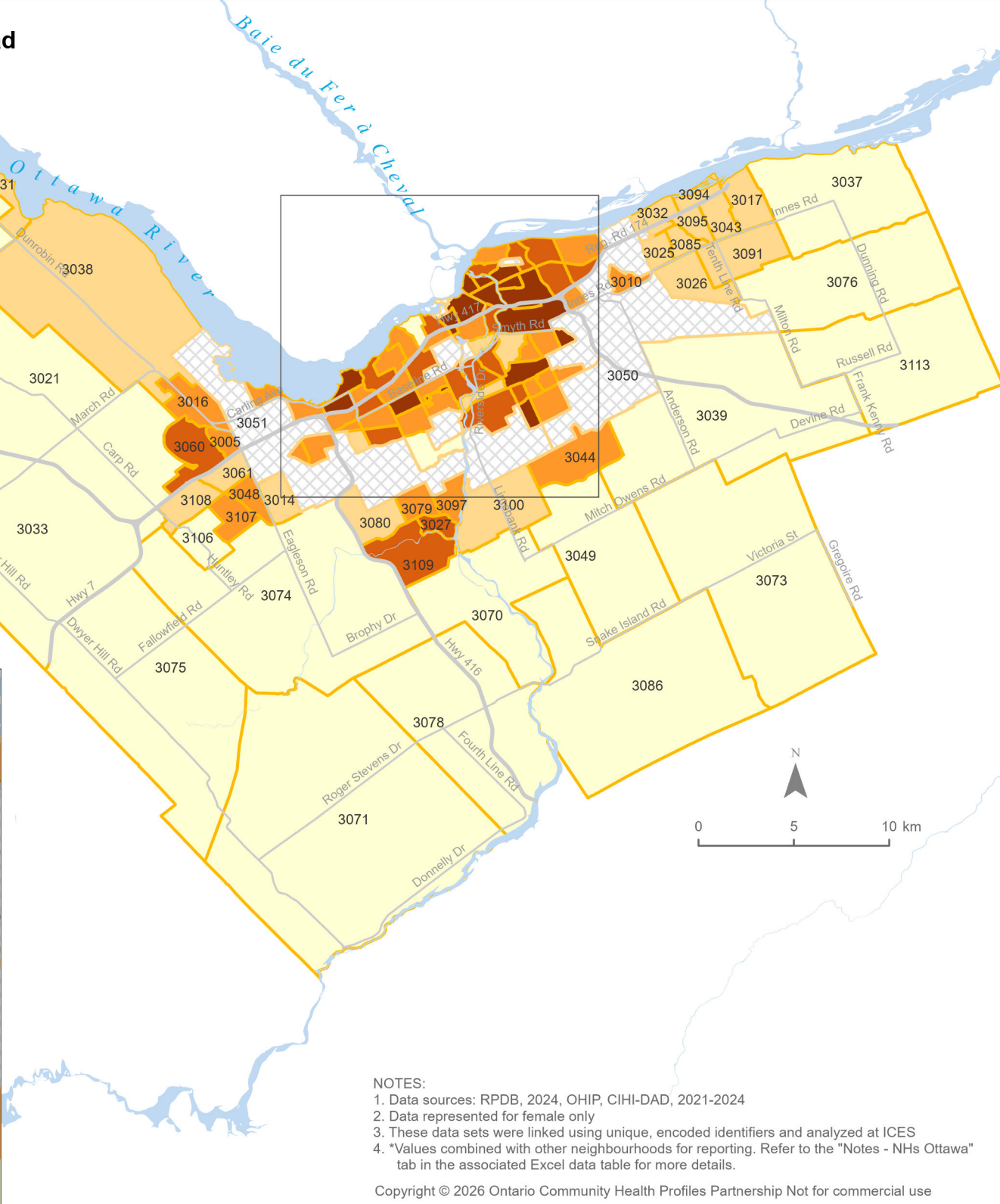
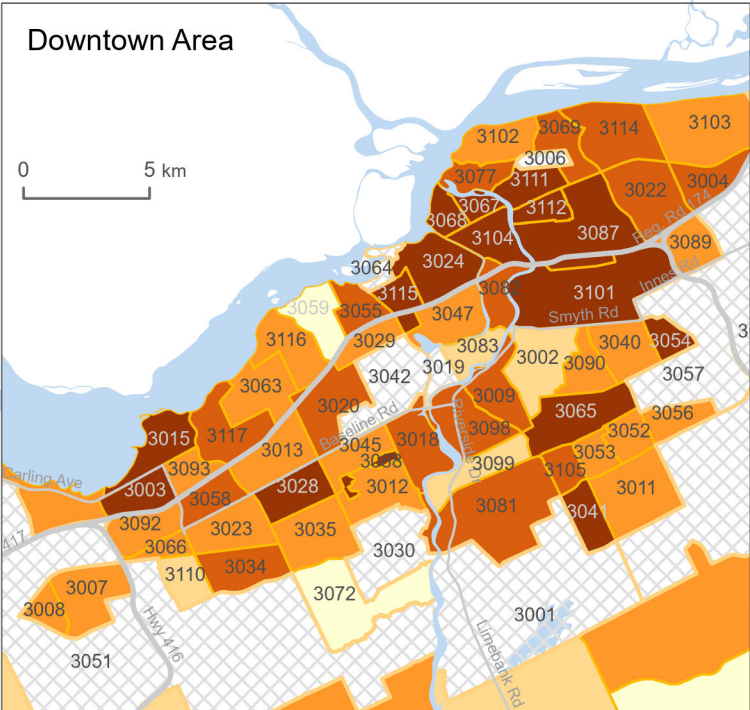
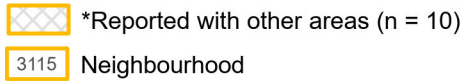
Age-Standardized Rate (/100) of Women who had Pap Smears, Age 21-69, 2021-2024

City of Ottawa Neighbourhoods

Ottawa Overall Rate = 55.8



Classes created by Natural Breaks



NOTES:

1. Data sources: RPDB, 2024, OHIP, CIHI-DAD, 2021-2024
2. Data represented for female only
3. These data sets were linked using unique, encoded identifiers and analyzed at ICES
4. *Values combined with other neighbourhoods for reporting. Refer to the "Notes - NHs Ottawa" tab in the associated Excel data table for more details.