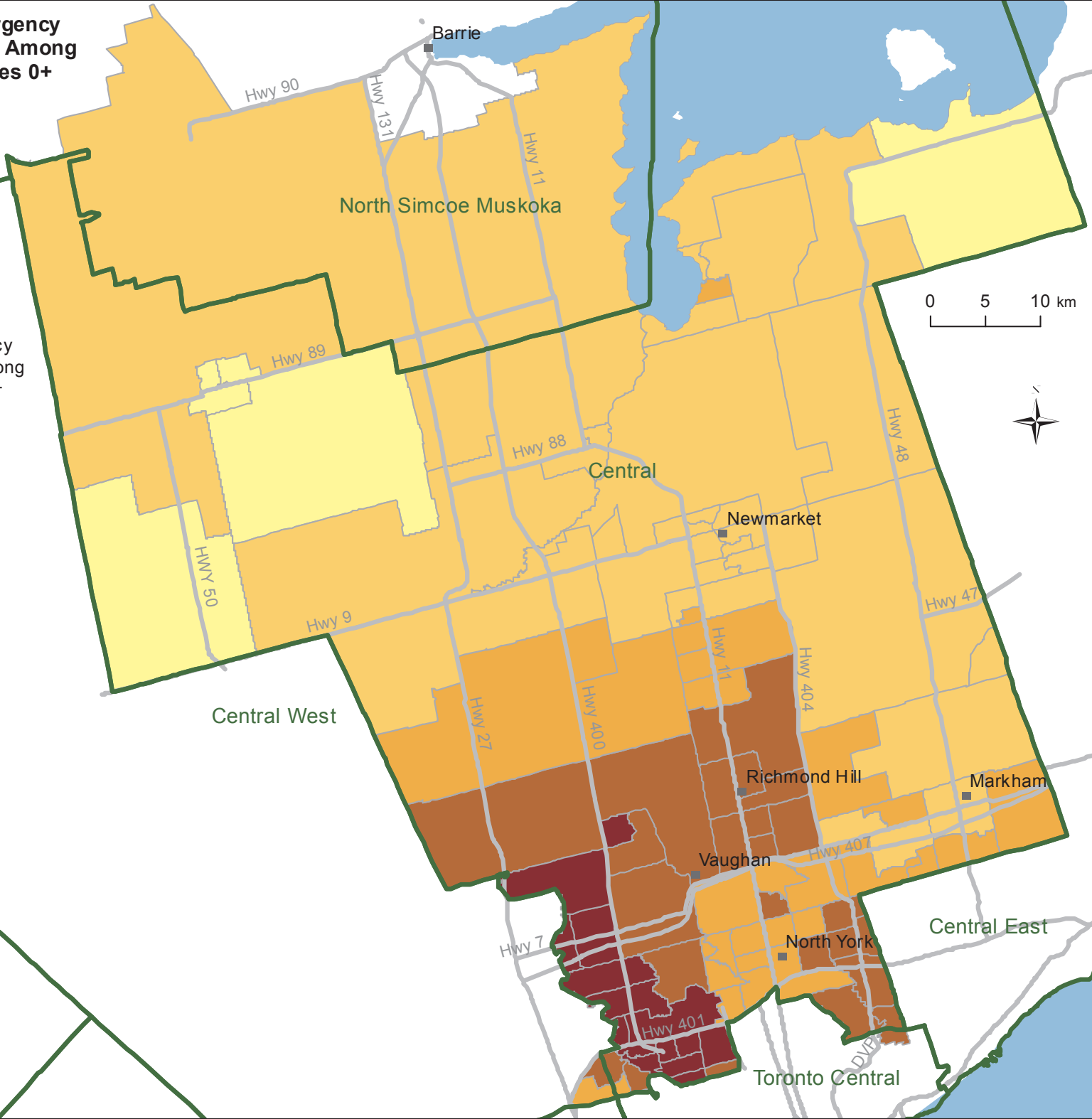
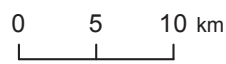


**Age-Standardized Rate of High Urgency
Emergency Department (ED) Visits Among
All ED Visits, Both Sexes, All Ages 0+
in Central LHIN, 2014/15
by Neighbourhood**

Age-Standardized Rate of High Urgency
Emergency Department (ED) Visits Among
All ED Visits, Both Sexes, All Ages 0+
in Central LHIN, 2014/15

- 50.7 - 56.0 (n=5)
- 56.1 - 65.3 (n=31)
- 65.4 - 71.2 (n=28)
- 71.3 - 76.4 (n=25)
- 76.5 - 81.1 (n=16)
- LHIN

Classes created using Natural Breaks



Data Sources:
2011 Census, Statistics Canada
2014/15 National Ambulatory Care Reporting
System (NACRS), Canadian Institute for Health
Information (CIHI)
Copyright © 2016
Ontario Health Profiles
Partnership
Not for commercial use