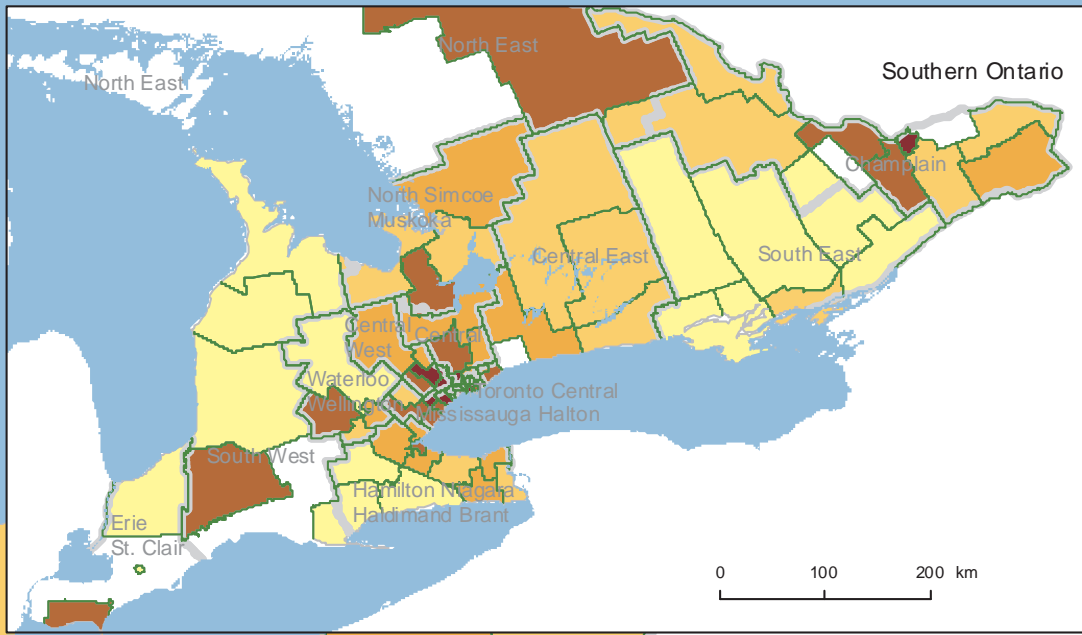
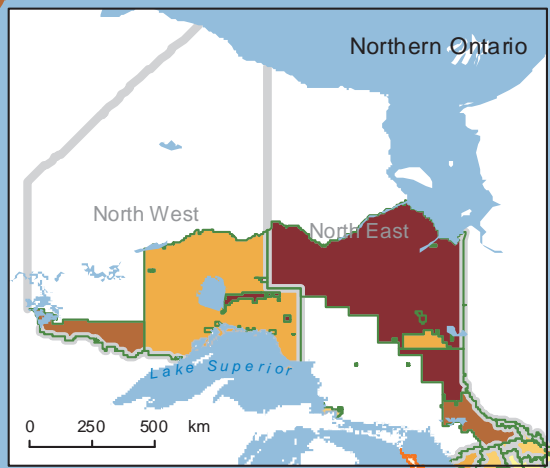
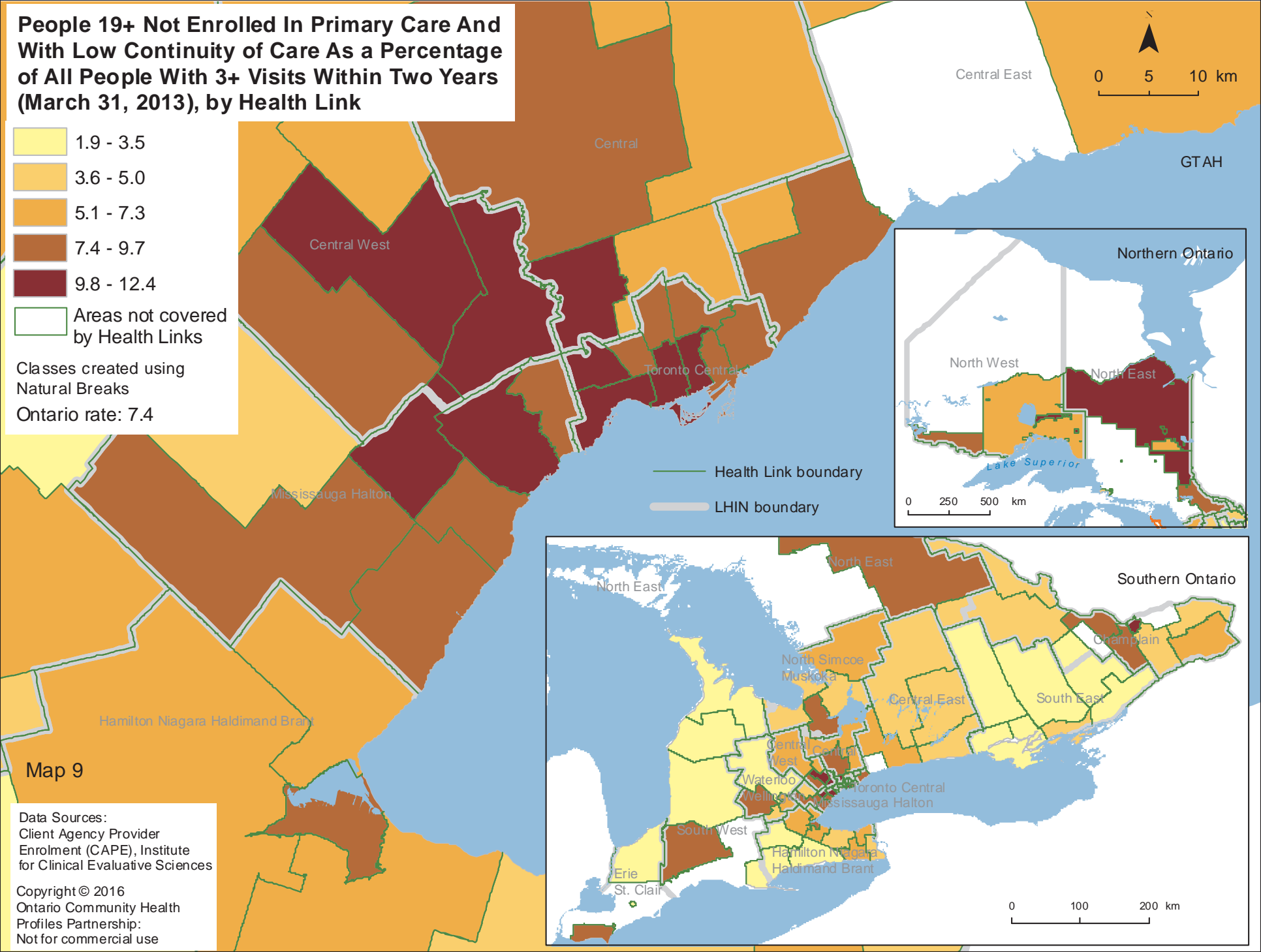
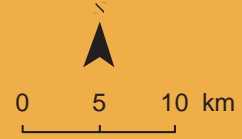


# People 19+ Not Enrolled In Primary Care And With Low Continuity of Care As a Percentage of All People With 3+ Visits Within Two Years (March 31, 2013), by Health Link

- 1.9 - 3.5
- 3.6 - 5.0
- 5.1 - 7.3
- 7.4 - 9.7
- 9.8 - 12.4
- Areas not covered by Health Links

Classes created using Natural Breaks  
 Ontario rate: 7.4



Map 9

Data Sources:  
 Client Agency Provider  
 Enrolment (CAPE), Institute  
 for Clinical Evaluative Sciences

Copyright © 2016  
 Ontario Community Health  
 Profiles Partnership:  
 Not for commercial use