

The Ontario Community Health Profiles Partnership Project: Using Health & Socio-Demographic Data for Planning

Presentation for Locally Driven Population Health Models Collective

November 19 2025

MAP Centre for
Urban Health
Solutions

OCHPP
Ontario Community
Health Profiles Partnership

What is OCHPP?

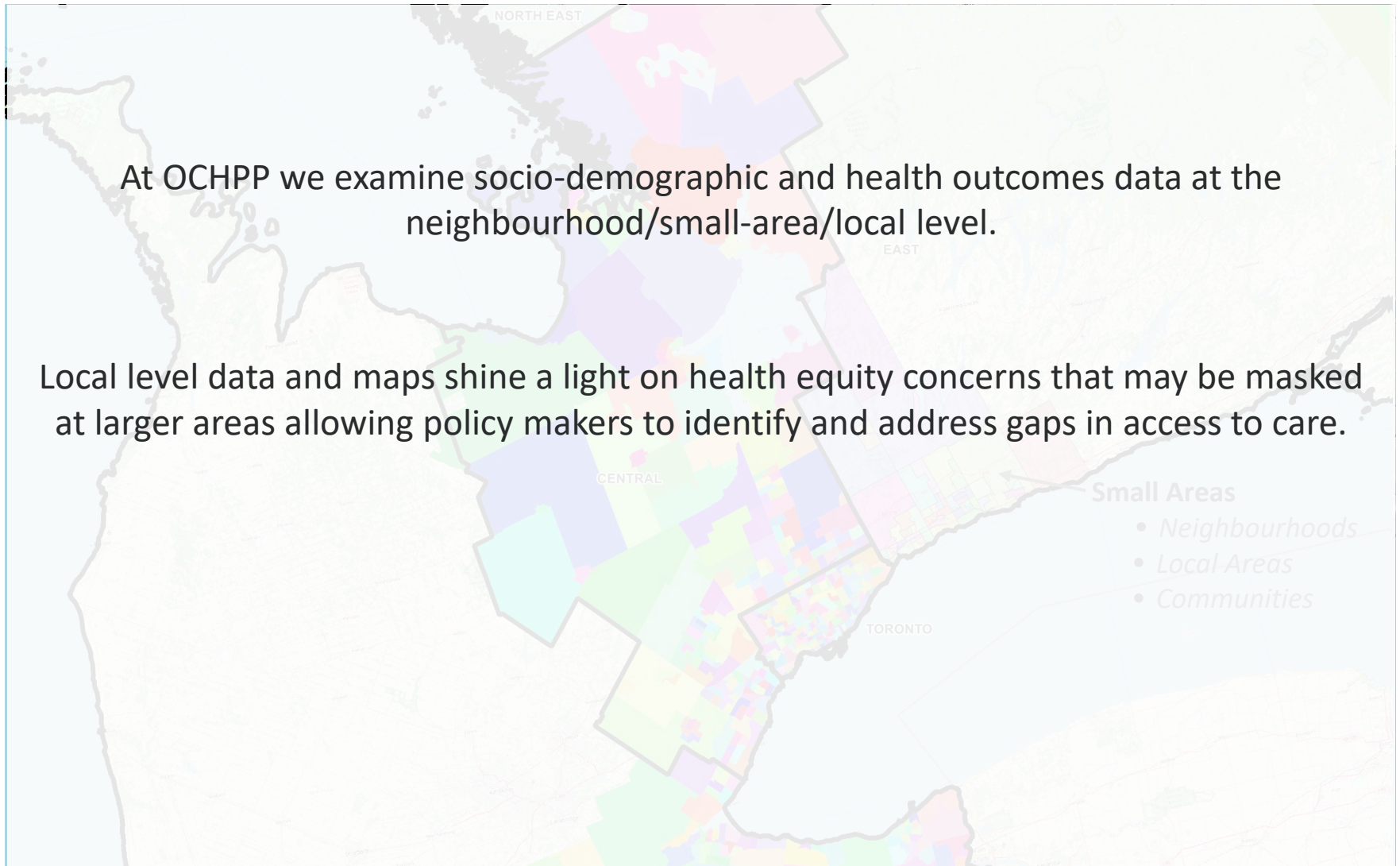
Publicly-accessible website established in 2005

Provision of health and socio-demographic data & maps at the neighbourhood/small area level for Ontario

Using Small Area Data For Planning

At OCHPP we examine socio-demographic and health outcomes data at the neighbourhood/small-area/local level.

Local level data and maps shine a light on health equity concerns that may be masked at larger areas allowing policy makers to identify and address gaps in access to care.



OCHPP: 25 Years and Counting



4000+ monthly
visitors



16 partners and
collaborators



Over 50
workshops and
trainings given



Dozens of maps
created per year



OCHPP reports health data for 700 small areas accounting for 10,953,756 people or 77% of the population of Ontario



The OCHPP conversion file includes over 585,000 cells of data and links all 20,181 Dissemination Areas in Ontario

The Ontario Community Health Profiles Partnership (OCHPP) makes high-quality, area-specific, health-related data available to everyone. Our team comprises experts in primary care, geospatial and data analytics partnered with public health professionals, community agencies and researchers. We provide data and maps both at the local and larger [areas of geography](#). Local level maps shine a light on health equity concerns that may be masked at larger areas allowing policy makers to identify and address gaps in access to care. Through our open-access, freely accessible website, we provide **free data and maps for everyone to use, download and share**. We provide health and health-related indicators in three basic forms: data tables, bar charts and health data maps.

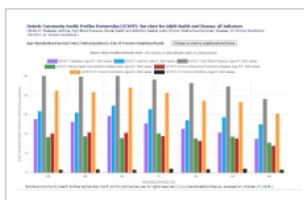
Primary Care Data Reports for Ontario Health Teams (OHTs)

Toronto Region Primary Care Workforce Planning Toolkit (Updated)

Data Tables

The screenshot shows a data table titled "Adult Health and Disease (PHDs) Prevalence (PHD) of Diabetes on April 1, 2017 for Toronto Neighborhoods, All Ages (16+)." It lists various health indicators such as Diabetes, Heart Disease, and Cancer across different Toronto neighborhoods. The table includes columns for the indicator, the neighborhood, and the prevalence rate.

Bar Charts



Health Data Maps



Partners: Our long-term partners and current clients include health-care planners, hospital administrators, health agencies and scientists. Our team of experts can help partners and new clients conduct research to better understand and predict trends in local areas using spatial analytic methods linked to administrative health and socio-demographic data. See more about our current Partners on the [About Us](#) page. To find out more about becoming a partner, please send an email to: healthprofiles@smh.ca

Celebrating 25 years: The Ontario Community Health Profiles Partnership (OCHPP) project celebrated 25 years on November 17, 2023. Thank you to all of our Partners and Colleagues at MAP Centre for Urban Health Solutions and Unity Health Toronto who helped us celebrate a wonderful in-person event! [OCHPP by numbers](#).

Navigating the OCHPP Website

OCHPP Website

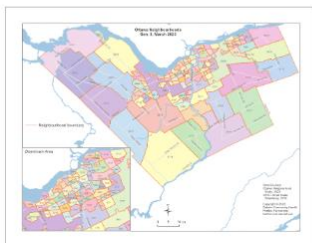
The screenshot shows the OCHPP website homepage. At the top, a navigation bar contains links: Home, **About Us** (1), Data, Charts and Maps (3), Resources, and Related Projects (5). Below the navigation bar, a large text block describes the OCHPP mission. Further down, there are sections for 'Primary Care Data Reports for Ontario Health Teams (OHTs)', 'Toronto Region Primary Care Workforce Planning Toolkit (Updated)', 'Data Tables', 'Bar Charts', and 'Health Data Maps'. A 'Partners' section lists various organizations. A 'Celebrating 25 years' section mentions a 2023 event. At the bottom, there are links for 'Spatial Analytic Services', 'Related Projects - Get Data From Partners' Projects', 'Testimonials: Who Is Using OCHPP Data', 'Recently Added', 'Coming Soon', 'Sign up for New Content alerts' (6), and 'OCHPP Geographies'. The footer contains logos for various partner organizations and a page number 'Page 6'.

Drop Down Menus

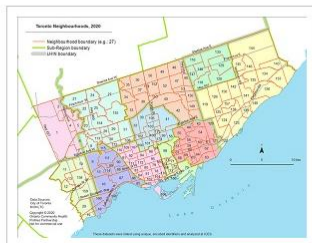
The diagram illustrates the navigation structure of the OCHPP website. It shows five main categories: Home, About Us (1), Data, Charts and Maps (3), Resources (4), and Related Projects (5). Each category has a list of sub-items. The 'About Us' category includes 'About Us', 'Contact Us', 'Our Team', and 'Partners'. The 'Data, Charts and Maps' category includes 'By Geographic Area', 'By Attributed Population Unit', 'Create Custom Geography', 'Interactive Maps', 'Geographic Boundaries Maps', 'About the Data', 'FAQs', 'Terms of Use', and 'Data Archives'. The 'Resources' category includes 'User Guides', 'Ontario Conversion Files', and 'Presentations and Reports'. The 'Related Projects' category includes 'Toronto Region Primary Care Workforce Planning Toolkit', 'COVID-19 Heterogeneity Project', 'Toronto Health Status Indicators', 'Ontario Marginalization Index (ON-Marg)', 'Canadian Marginalization Index (CAN-Marg)', 'Ontario Primary Care', and 'Mapping Neighbourhoods'. A 'Sign up for New Content Alerts' button (6) is also shown. The diagram also includes a 'Website tab' and a 'Link to new window'.

OCHPP Reporting Geographies

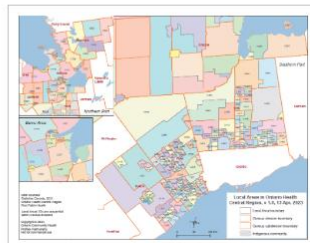
Neighbourhoods in City of Ottawa



Neighbourhoods in City of Toronto



Local Areas in OH Central



Geographic Scale



Ontario Health Regions

Pop Range: 250,000 – 4,500,000



Modified LHIN Sub-Regions

Pop Range: 9,000 – 637,000



Small Areas

8 Locations in Southern Ontario

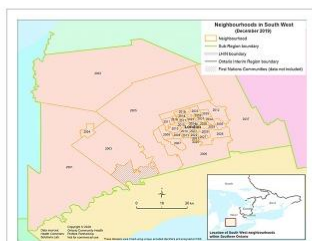
700 Reportable Small Areas

Median Pop: 16,500

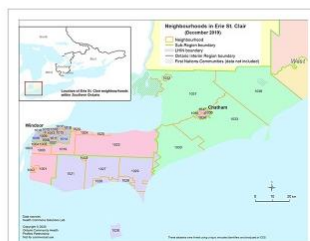
Neighbourhoods in Hamilton Niagara
Haldimand Brant



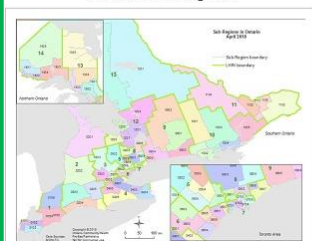
Neighbourhoods in South West



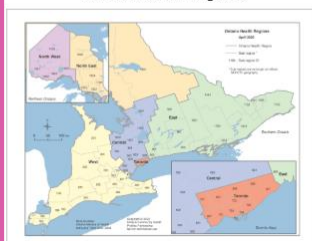
Neighbourhoods in Erie St. Clair



Ontario Sub-Regions



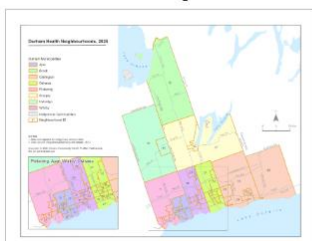
Ontario Health Regions



Frontenac Lennox and Addington – OHT



Durham Health Neighbourhoods



OCHPP Data Charts and Maps: Data Sources

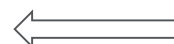
Indicator:	Health	Socio-Demographic
Source:	ICES <i>(through a partnership)</i>	Statistics Canada <i>(open source)</i>
Origin:	Health databases	Census of Population
Data Set(s):	Registered Persons Database <i>(your health card)</i> + other data sets	Census variables

Other data sources

- ConnexOntario - alcohol and gambling-related data
- Partner-shared data such as surveys

OCHPP Data Charts and Maps

Data Topic Category	Neighbourhoods in City of Toronto		
	Tables	Charts	Maps
	(EXCEL)	(BAR CHARTS)	(PDF)
Census-based population denominators	2021, 2016		
Census Variables			
Socio-demographic, Census Canada			
Income ¹	2021, 2016	2021, 2016	Select Census Year Maps: 2021, 2016
Households and Dwellings ²	2021, 2016	Select Chart, 2016	Select Census Year Maps: 2021
Population Characteristics ³	2021 ⁴ , 2016		Select Census Year Maps: 2021, 2016
Ontario Marginalization Index			
<ul style="list-style-type: none"> Material Resources Households and Dwellings Age and Labour Force Racialized and Newcomer Populations 	2021 ⁵		Select Map, 2021
Registered Persons Database (RPDB)-based population denominators	2024 ⁶ , 2023 ⁶ , 2022 ⁶		
Adult Health Indicators	Tables	Charts	Maps
Primary Care			
Attachment to Primary Care:			
<ul style="list-style-type: none"> Attachment Status: Attached Attachment Status: Uncertainly Attached Attachment Status: Receiving Primary Care/Not Receiving Primary Care 	2023, 2020/22		Select Map, 2023
Prevention			
<ul style="list-style-type: none"> Mammograms Pap smears Any Colorectal Cancer Screening Colonoscopy Fecal Immunochemical Test (FIT) 	2018/20 ⁷ , 2016/18	Select Chart, 2018/20	Select Map, 2018/20
Adult Health and Disease			
Diabetes	2021/22, ⁸ 2018/19 ⁸		2021/22
Asthma	2021/22 ⁹		2021/22
High Blood Pressure	2021/22 ⁹		2021/22
Mental Health and Addiction-related visits	2023 ¹⁰		2023
Chronic Obstructive Pulmonary Disease	2022/23 ¹¹		2022/23
2+ Chronic Conditions	2022/23 ¹² , 2018/19 ¹²		2022/23
4+ Chronic Conditions	2021/23 ¹³ , 2017/19 ¹³		2021/23
Congestive Heart Failure (CHF)	2022/23 ¹⁴		
Palliative Care			
Emergency Department (ED) visits within 2 weeks before death			
Sexual Health			
<ul style="list-style-type: none"> Chlamydia cases Gonorrhea cases 	2018/22		
Premature Mortality			
Premature Mortality	2021/23 ¹⁵		
Leading Causes of Premature Mortality			
Children and Youth Health Indicators	Tables	Charts	Maps
Children and Youth			
<ul style="list-style-type: none"> Asthma Mental Health and Addiction-related Emergency Department (ED) visits 	2014/15		Select Map, 2014/15
Mothers and Babies			
Mothers and Babies	2021*, 2012/15		Select Map, 2012/15
18-Month Well-Baby Visits	2012/21*, 2012/15		
Births By Mother's Country of Birth	2019/21		
Annual Birth Rate	2020/22		
Emergency Department (ED) Care Visits Indicators	Tables	Charts	Maps
Emergency Department Care			
<ul style="list-style-type: none"> All Emergency Department (ED) visits ED visits by High Urgency (HU) ED visits by Low Urgency (LU) 	2021/23 ¹⁶ , 2018/20 ¹⁶	Select Chart, 2018/20 Select Chart, 2015/17	Select Map, 2021/23
Mental Health and Addiction-related ED visits	2021/23 ¹⁷ , 2018/20 ¹⁷	2018/20, 2015/17	Select Map, 2018/20
Hospital Related Conditions Indicators	Tables	Charts	Maps
Hospital Admissions			
All Hospital Admissions	2021/23, 2015/17	2015/17	
Medical Hospital Admissions	2021/23, 2015/17	2015/17	
Surgical Hospital Admissions	2021/23, 2015/17	2015/17	
Mental Health and Addiction-related Hospital Admissions	2021/23		
Ambulatory Care Sensitive Conditions (ACSC) Hospitalizations	2021/23, 2015/17	2015/17	
	Tables	Charts	Maps



Geography



Census Data

Census Denominators

Socio-Demographic Tables

ON-Marg

RPDB Denominators



Health Data (RPDB)

Indicator Tables

Create Output for a Customized Set of Small Areas

[illegible]

Select Areas

Select Indicators

[illegible]

➤ **Output**
Customized
Table(s)

Case Study

Using OCHPP Data To Inform Local Planning: Health Human Resources (HHR) Toolkit

Health Human Resources Project

Led by:



Canadian Health Workforce
Network (CHWN)



& Ontario Health
Toronto Region

Data Support from:



OCHPP

OCHPP Website

[Home](#)
[About Us](#)
[Data, Charts and Maps](#)
[Resources](#)
[Related Projects](#)

The Ontario Community Health Profiles Partnership (OCHPP) makes high-quality, area-specific, health-related data available to everyone. Our team comprises experts in primary care, geospatial and data analytics partnered with public health professionals, community agencies and researchers. We provide data and maps both at the local and larger areas of geography. Local level maps shine a light on health equity concerns that may be masked at larger areas allowing policy makers to identify and address gaps in access to care. Through our open-access, freely accessible website, we provide free data and maps for everyone to use, download and share. We provide health and health-related indicators in three basic forms: data tables, bar charts and health data maps.

[Primary Care Data Reports for Ontario Health Teams \(OHTs\)](#)

[Toronto Region Primary Care Workforce Planning Toolkit \(Updated\)](#)

Data Tables

Bar Charts

Health Data Maps

Partners: Our long term partners and current clients include health-care planners, hospital administrators, health agencies and scientists. Our team of experts can help partners and new clients conduct research to better understand and predict trends in local areas using spatial analytic methods linked to administrative health and socio-demographic data. See more about our current Partners on the [About Us](#) page. To find out more about becoming a partner, please send an email to: healthprofiles@smh.ca

Celebrating 25 years: The Ontario Community Health Profiles Partnership (OCHPP) project celebrated 25 years on November 17, 2023. Thank you to all of our Partners and Colleagues at MAP Centre for Urban Health Solutions and Unity Health Toronto who helped us celebrate a wonderful in-person event! [OCHPP by numbers](#)

[Spatial Analytic Services](#)

[Related Projects – Get Data From Partners’ Projects](#)

[Testimonials: Who Is Using OCHPP Data](#)

[Recently Added](#)

[Coming Soon](#)

[Sign up for New Content alerts](#)

[OCHPP Geographies](#)

[Home](#) | [About Us](#) | [Contact Us](#) | [Data, Charts and Maps](#) | [About the Data](#) | [FAQs](#) | [Terms Of Use](#) | [Custom Geography](#) | [Interactive Maps](#) | [Data Archives](#)

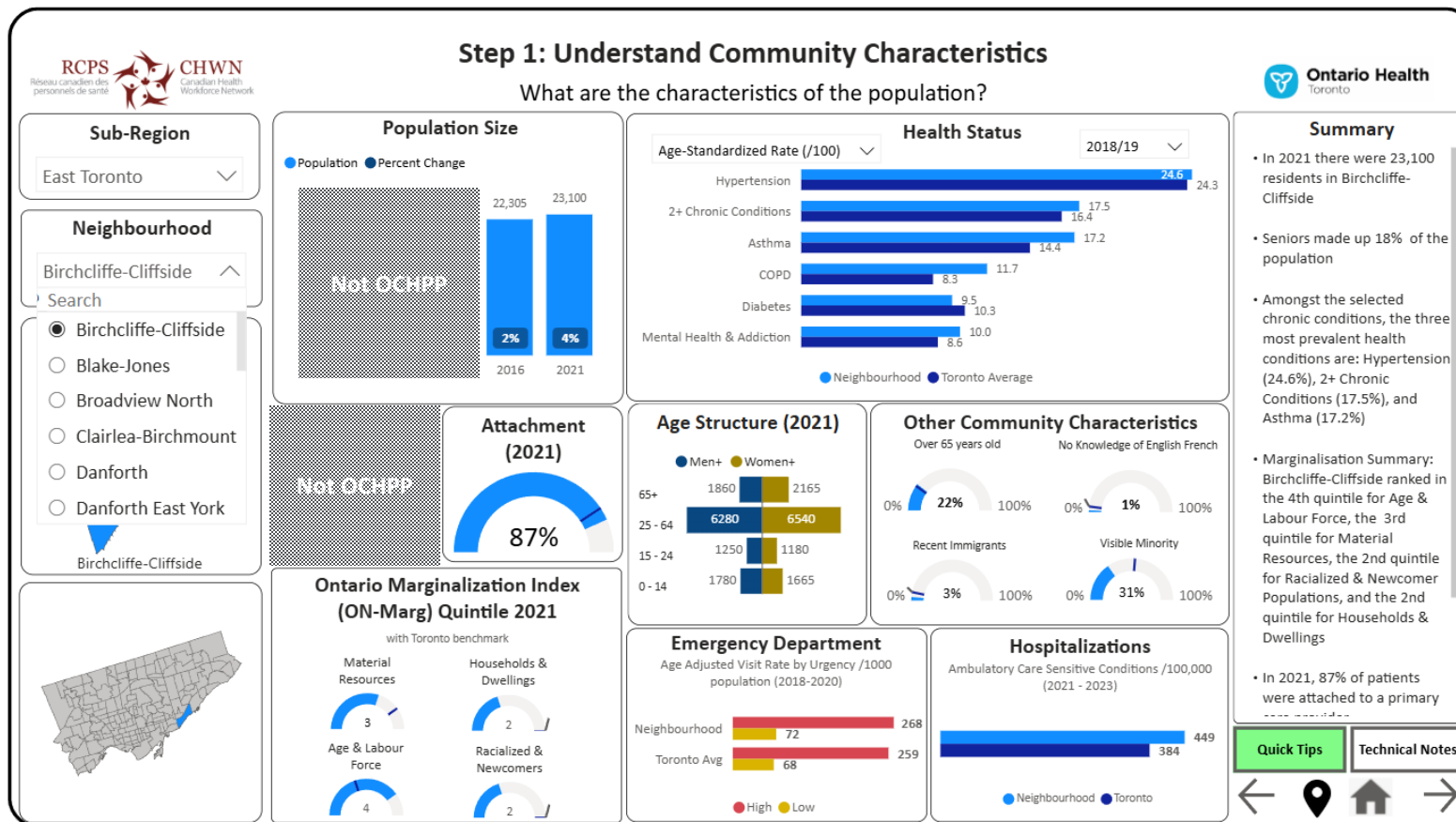
Case Study: OCHPP Data & Local Planning

Toronto Region Primary Care Workforce Planning Toolkit (Updated)

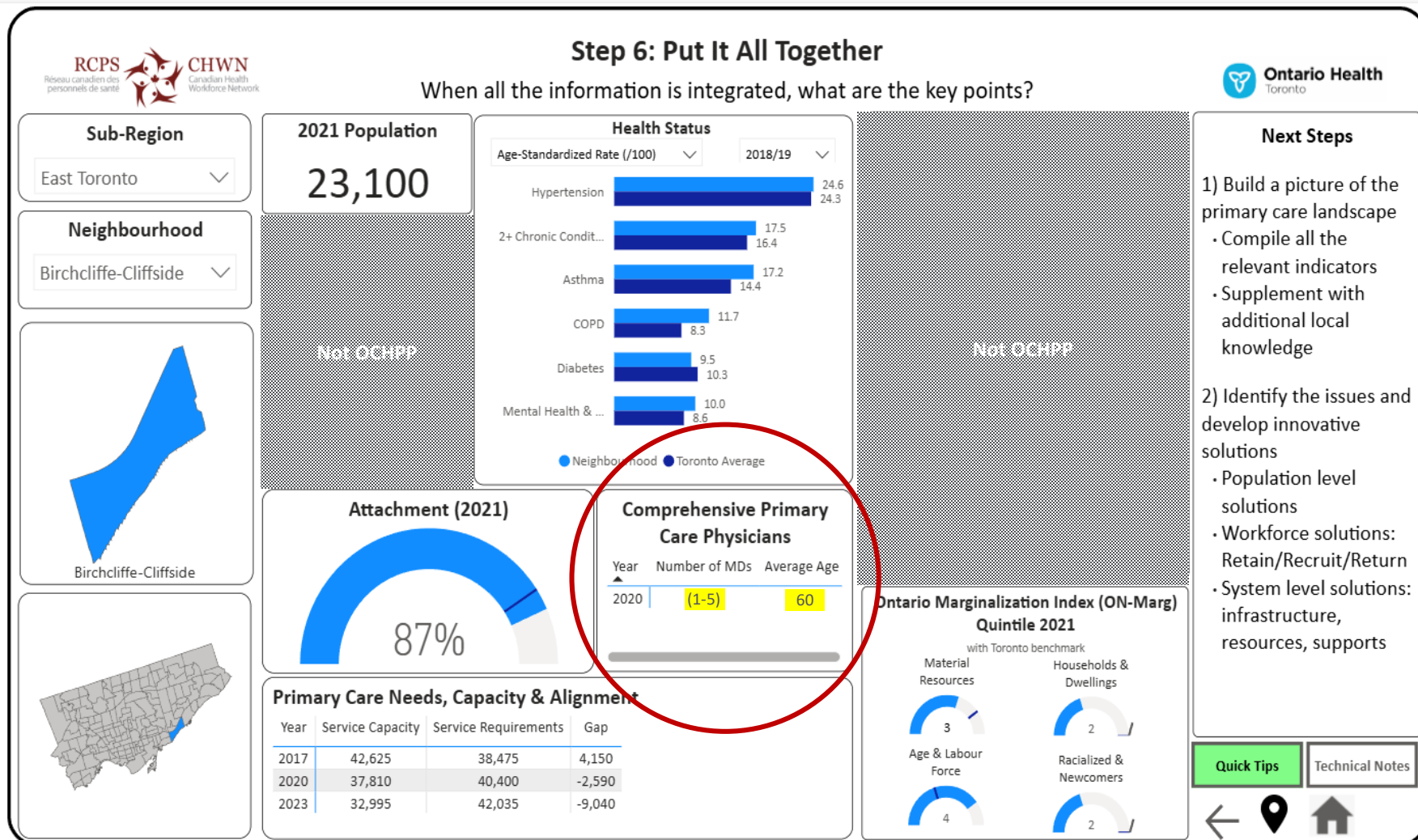
Planning Process



Community Characteristics



What does local data show us and what do we also have to keep in mind?

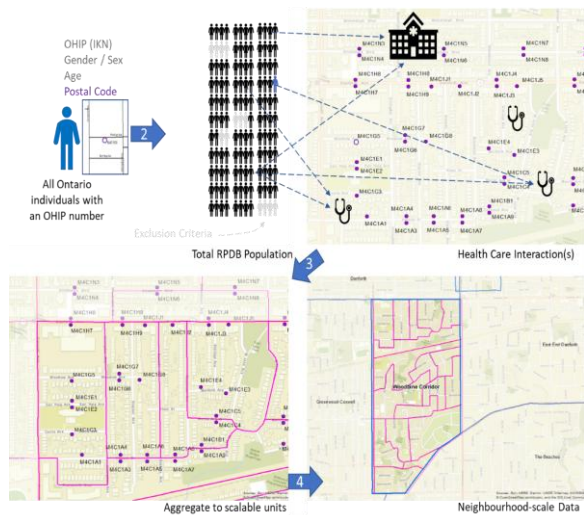


OCHPP – Beyond the Numbers

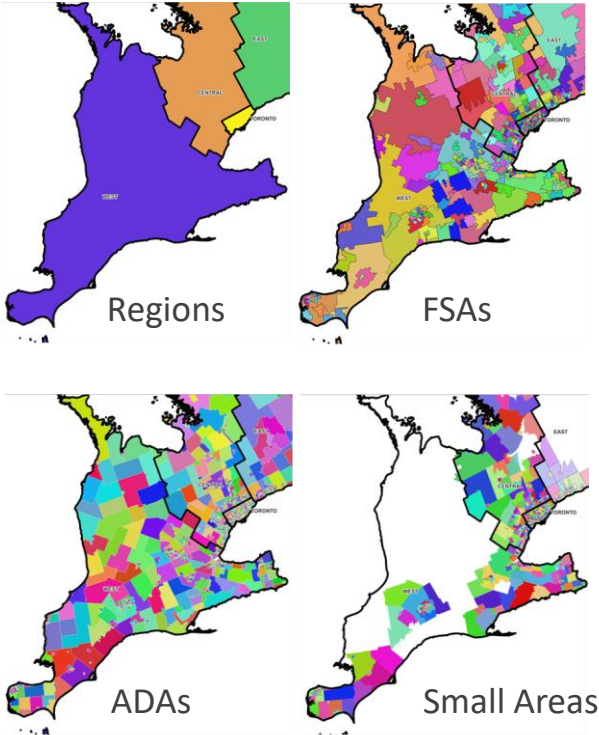
Navigating Small Area Data

OCHPP Provides Guidance and Collaborates on:

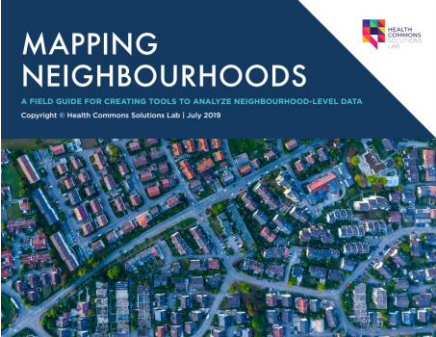
Linking “Person & Place” – RPDB Counts



“Disentangling” Geographies



Small Area Development



Research

Informing Decisions About Where Health Care Resources Are Needed The Most: A Deep Dive into Population Needs and Provider Characteristics in Ontario Health Toronto and Central Regions



Thanks for Listening! Questions?

OCHPP
Ontario Community Health Profiles Partnership

HomeAbout UsData, Charts and MapsResourcesRelated Projects

The Ontario Community Health Profiles Partnership (OCHPP) makes high-quality, area-specific, health-related data available to everyone. Our team comprises experts in primary care, geospatial and data analytics partnered with public health professionals, community agencies and researchers. We provide data and maps both at the local and larger areas of geography. Local level maps shine a light on health equity concerns that may be masked at larger areas allowing policy makers to identify and address gaps in access to care. Through our open-access, freely accessible website, we provide free data and maps for everyone to use, download and share. We provide health and health-related indicators in three basic forms: data tables, bar charts and health data maps.

Primary Care Data Reports for Ontario Health Teams (OHTs)

Toronto Region Primary Care Workforce Planning Toolkit (Updated)

Data Tables

Bar Charts

Health Data Maps

Partners: Our long-term partners and current clients include health-care planners, hospital administrators, health agencies and scientists. Our team of experts can help partners and new clients conduct research to better understand and predict trends in local areas using spatial analytic methods linked to administrative health and socio-demographic data. See more about our current Partners on the [About Us](#) page. To find out more about becoming a partner, please send an email to: healthprofiles@smh.ca

Celebrating 25 years: The Ontario Community Health Profiles Partnership (OCHPP) project celebrated 25 years on November 17, 2023. Thank you to all of our Partners and Colleagues at MAP Centre for Urban Health Solutions and Unity Health Toronto who helped us celebrate a wonderful in-person event [OCHPP by numbers](#).

Spatial Analytic Services +

Related Projects – Get Data From Partners' Projects +

Testimonials: Who Is Using OCHPP Data +

Recently Added +

Coming Soon +

Sign up for New Content alerts

OCHPP Geographies +

ST. MICHAEL'S
UNITY HEALTH TORONTO

MAP
Centre for Urban Health Solutions

Toronto
Public Health

Access Alliance
Advancing better health

Wellesley
Institute
Advancing better health

WellbeingToronto

Ontario Health
Toronto

ICES
Data Discovery
Better Health

Ontario Health
Central

HEALTH
SOLUTIONS
UAT

HEALTH
SOLUTIONS
UAT

ConnexOntario

UNIVERSITY OF TORONTO
FACULTY OF MEDICINE

Region of Peel
working with you

Queens

[Home](#) | [About Us](#) | [Contact Us](#) | [Data, Charts and Maps](#) | [About the Data](#) | [FAQs](#) | [Terms Of Use](#) | [Custom Geography](#) | [Interactive Maps](#) | [Data Archives](#)



www.OntarioHealthProfiles.ca