
Geographic Variation in Primary Care Need, Service Use and Providers in Ontario 2015/16

**The OCHPP Website: An Overview and Practice with
new Sub-region Data**

September 21, 2018

**Rick Glazier on behalf of the SMH and ICES
Analytic Team**



Analytic Team

Scientists, leadership, knowledge users:

Rick Glazier, Curtis Handford, Geordie Fallis, Tara Kiran, Flora Matheson, Aisha Lofters,
Cynthia Damba, Jocelyn Charles
Mental health working group: Anna Durbin, Paul Kurdyak, Rachel Solomon, Simone Vigod

TC LHIN:

Cynthia Damba, Marsha Barnes, Nathalie Sava, Ting Lim, Margery Konan, Laera Gattoni

Coordination and management:

Anne-Marie Tynan (C-UHS), Patrick O'Brien (St. Michael's Hospital)

Geographers:

Peter Gozdyra, Gary Moloney (ICES/C-UHS)

ICES analytic and epidemiology staff:

Li Bai, Ellie Corn, Min Kim, Alex Kopp, Sue Schultz, Yvonne DeWit, Kinwah Fung

Data and web development:

Nadiya Minkovska

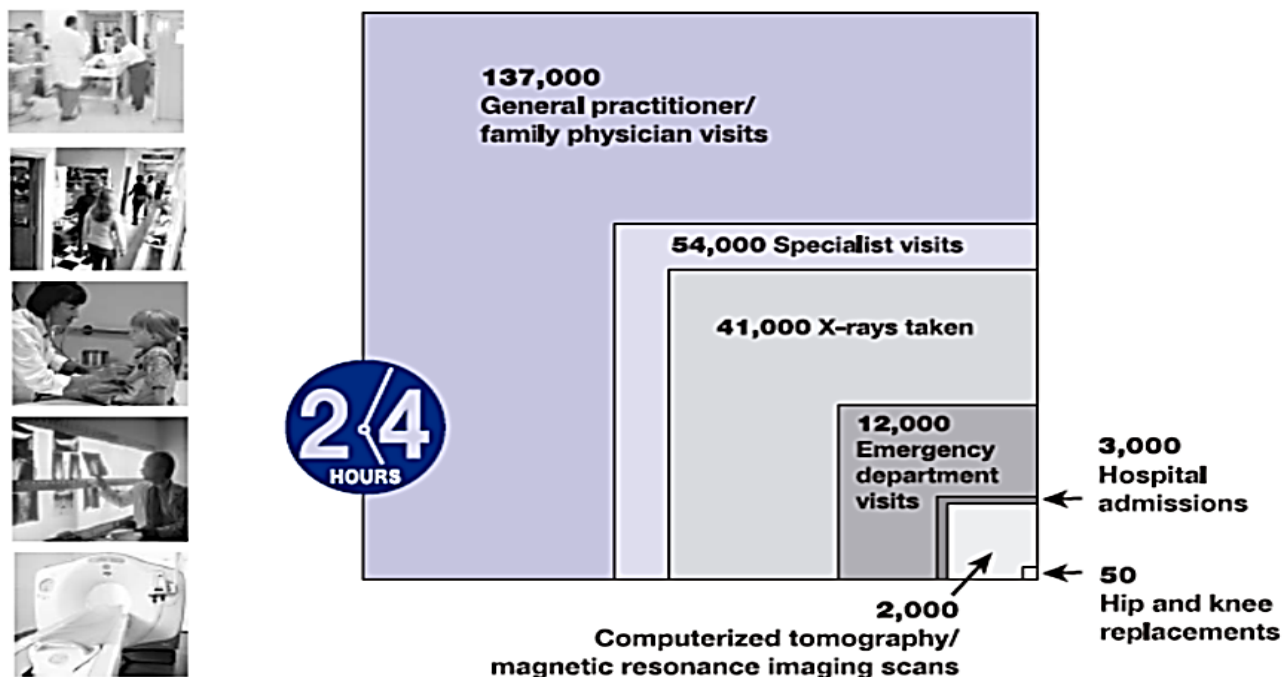


Health Services Accessed Each Day

(ICES Primary Care Atlas)

Exhibit 1.1

Average number* of various health care services accessed each day, in Ontario, 2002/03



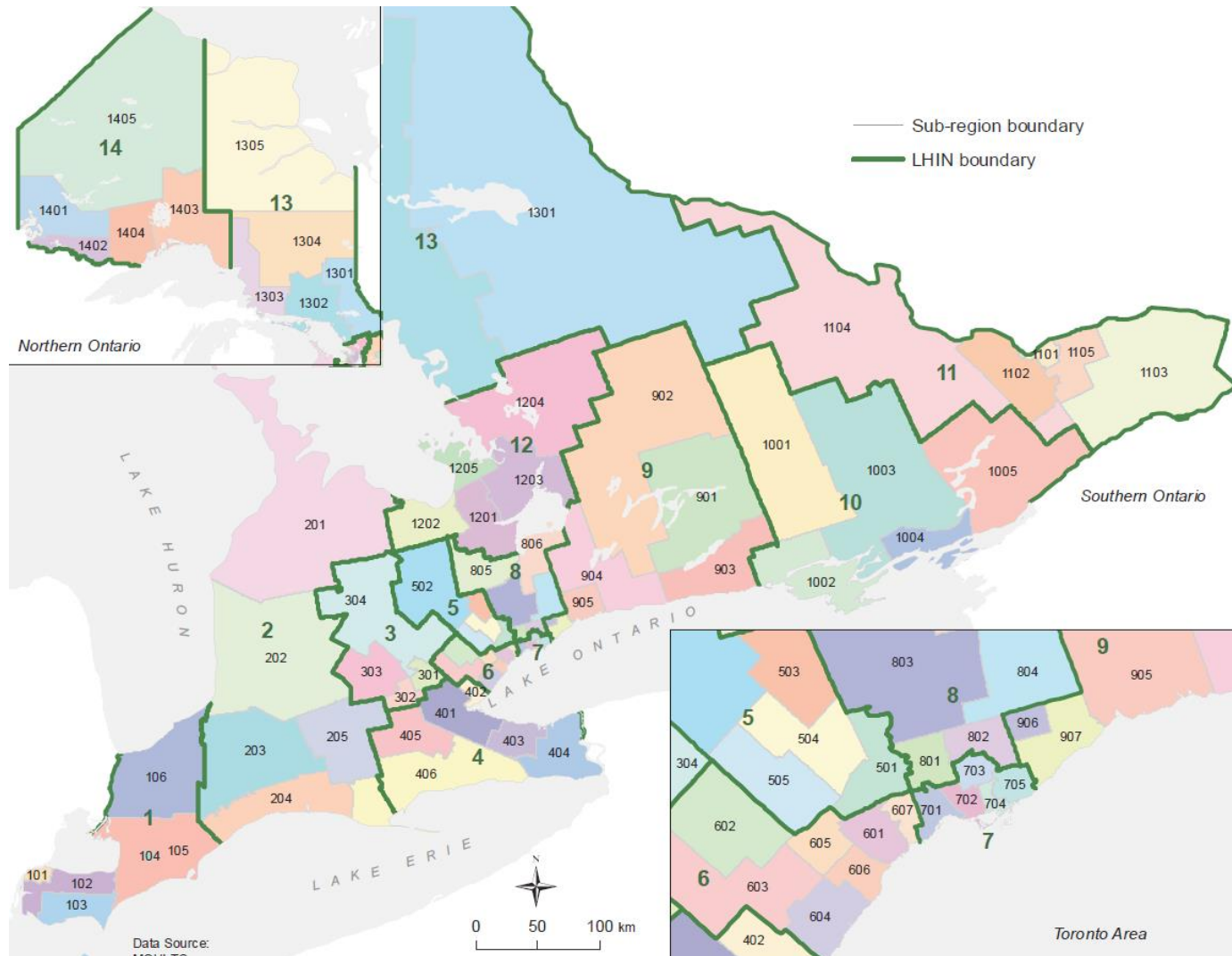
*Values rounded to the nearest thousand with the exception of hip and knee replacements, which were rounded to the nearest 10.

Primary Care and Outcomes

- Primary care associated with
 - Lower
 - mortality, premature mortality, infant mortality
 - disparities in overall mortality, infant mortality, low birth weight, stroke mortality, self-reported health, and avoidable hospitalizations
 - Higher
 - satisfaction in relation to overall costs

Macinko J et al. Health Services Research. 2003;38:831-65
Shi L et al. Health Services Research. 2002;37:529-50
Engstrom S et al. Scand J Prim Health Care 2001; 19:131-4

How Would You Plan for Primary Care in Ontario's 76 Sub-Regions?



How Would You Plan for Primary Care in Ontario's 76 Sub-Regions?

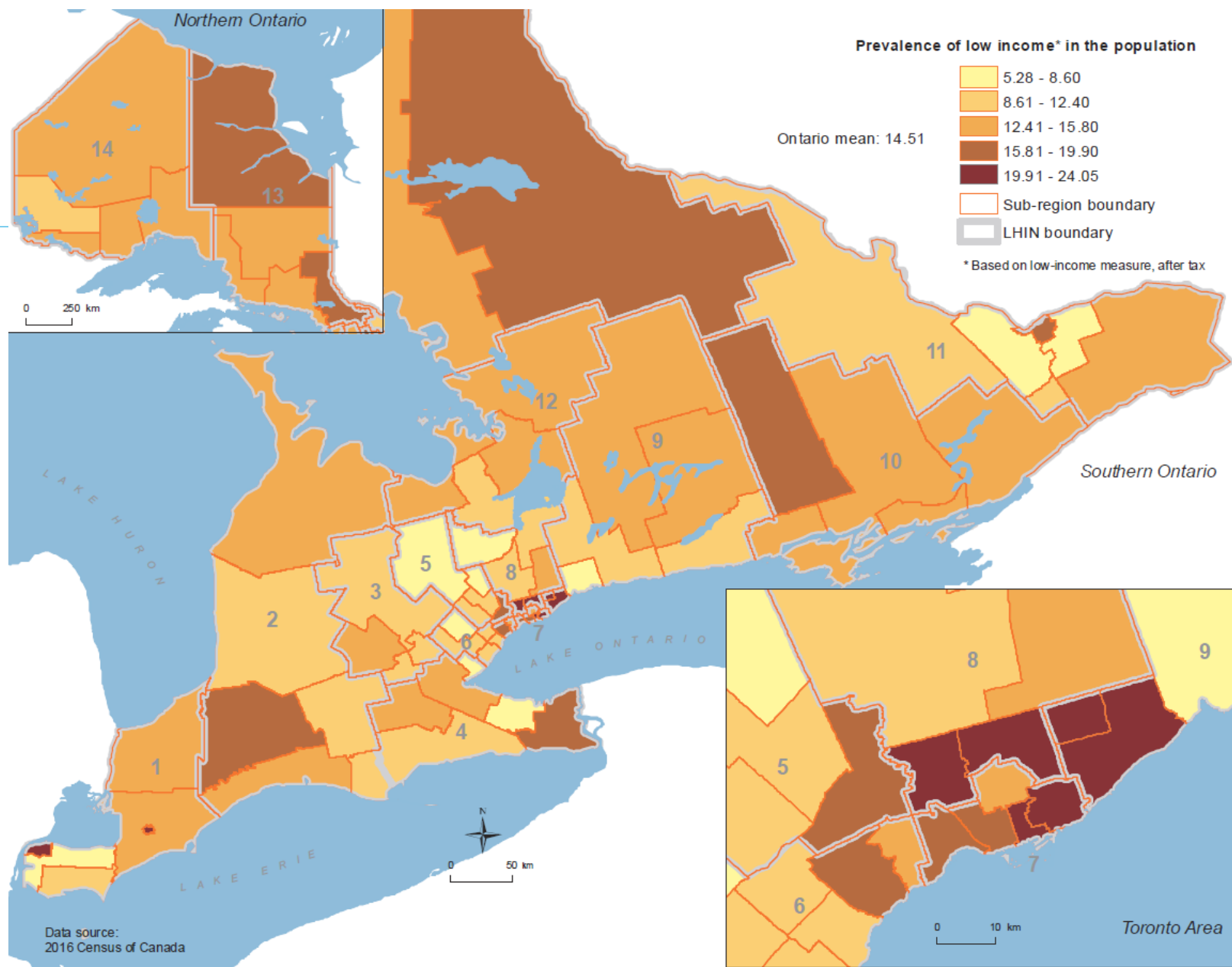
- Where to start?
 - **population health needs?**
 - utilization?
 - providers?
 - something else?

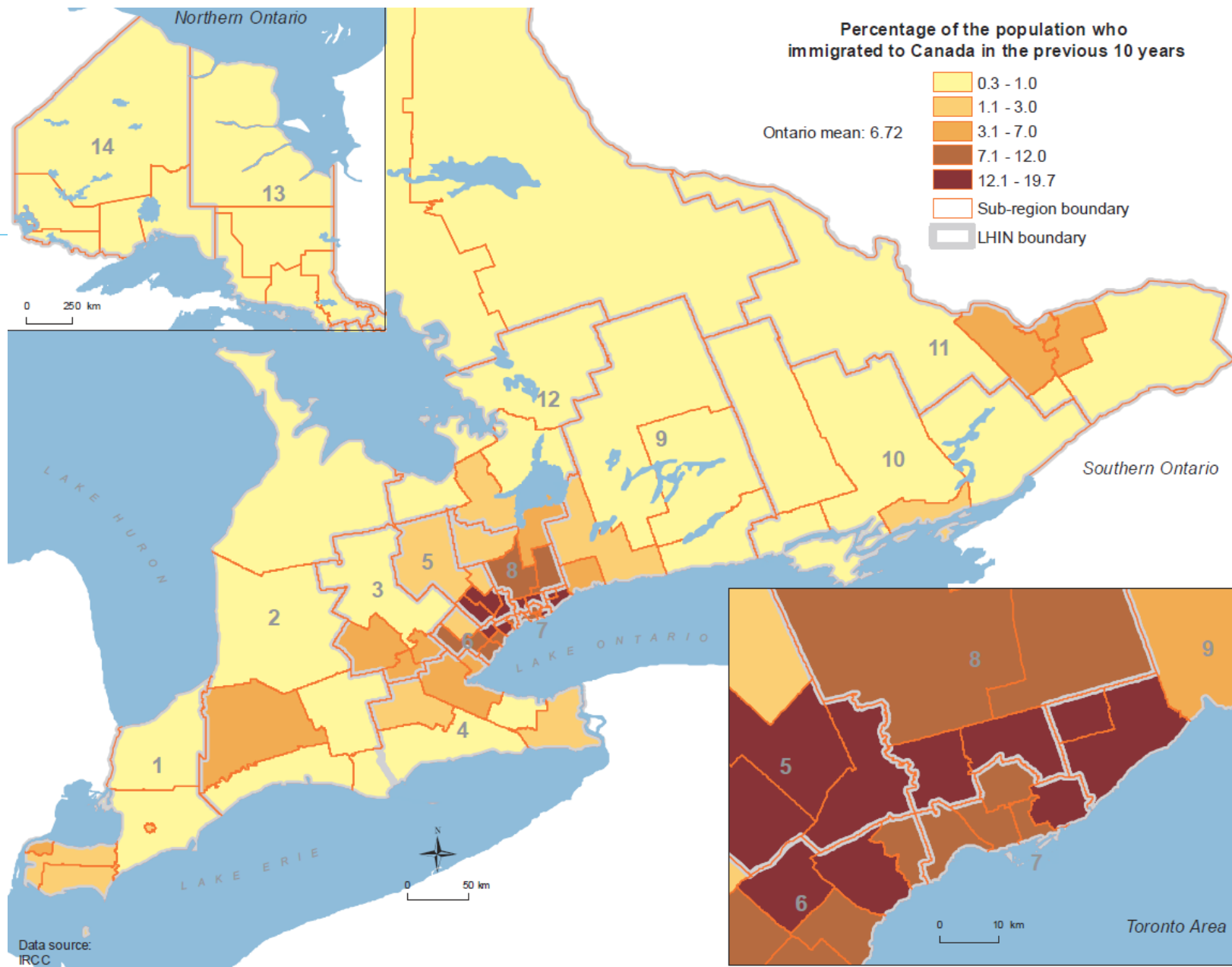
Population Health Needs

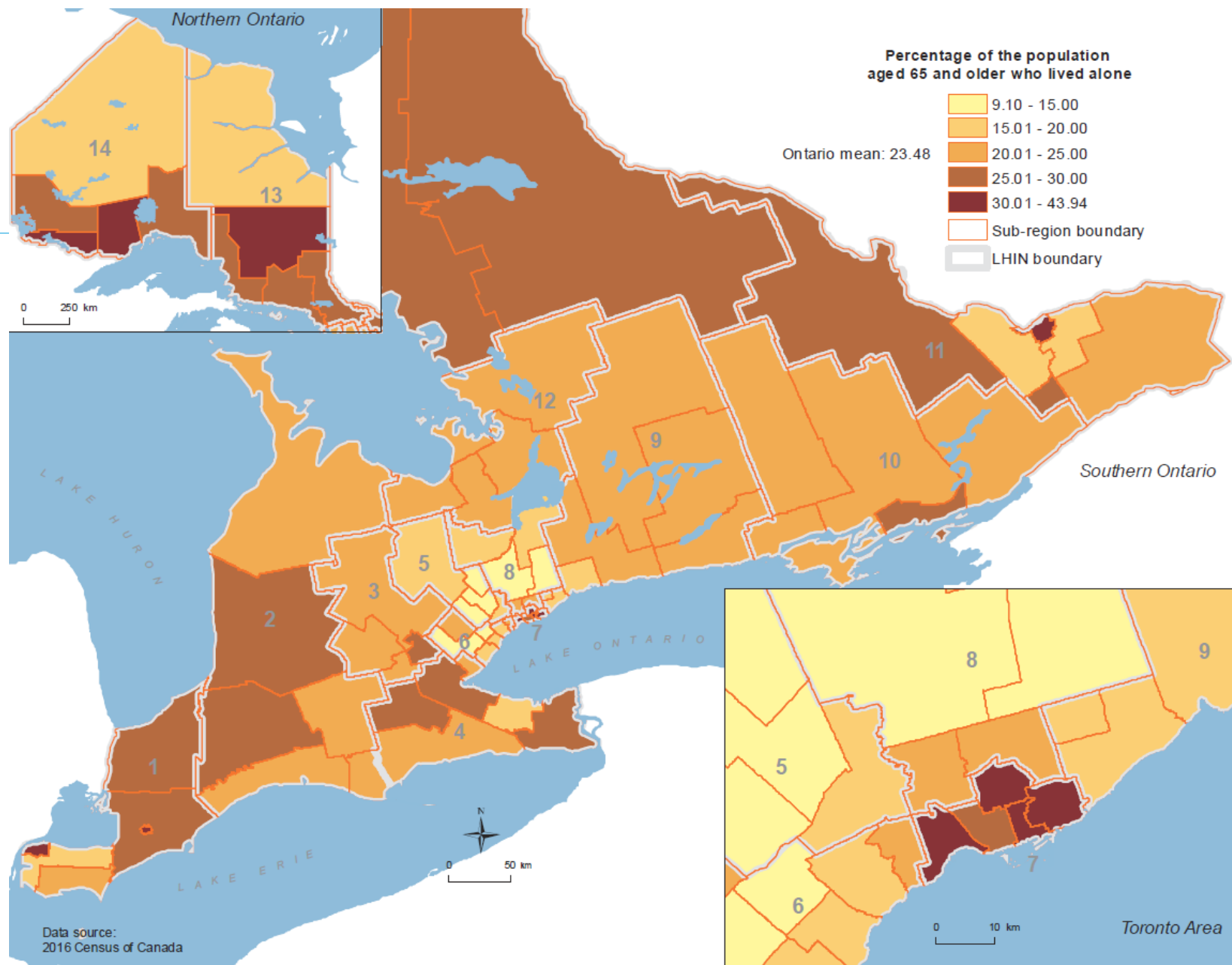
- What measures?
- Do they vary across the province?

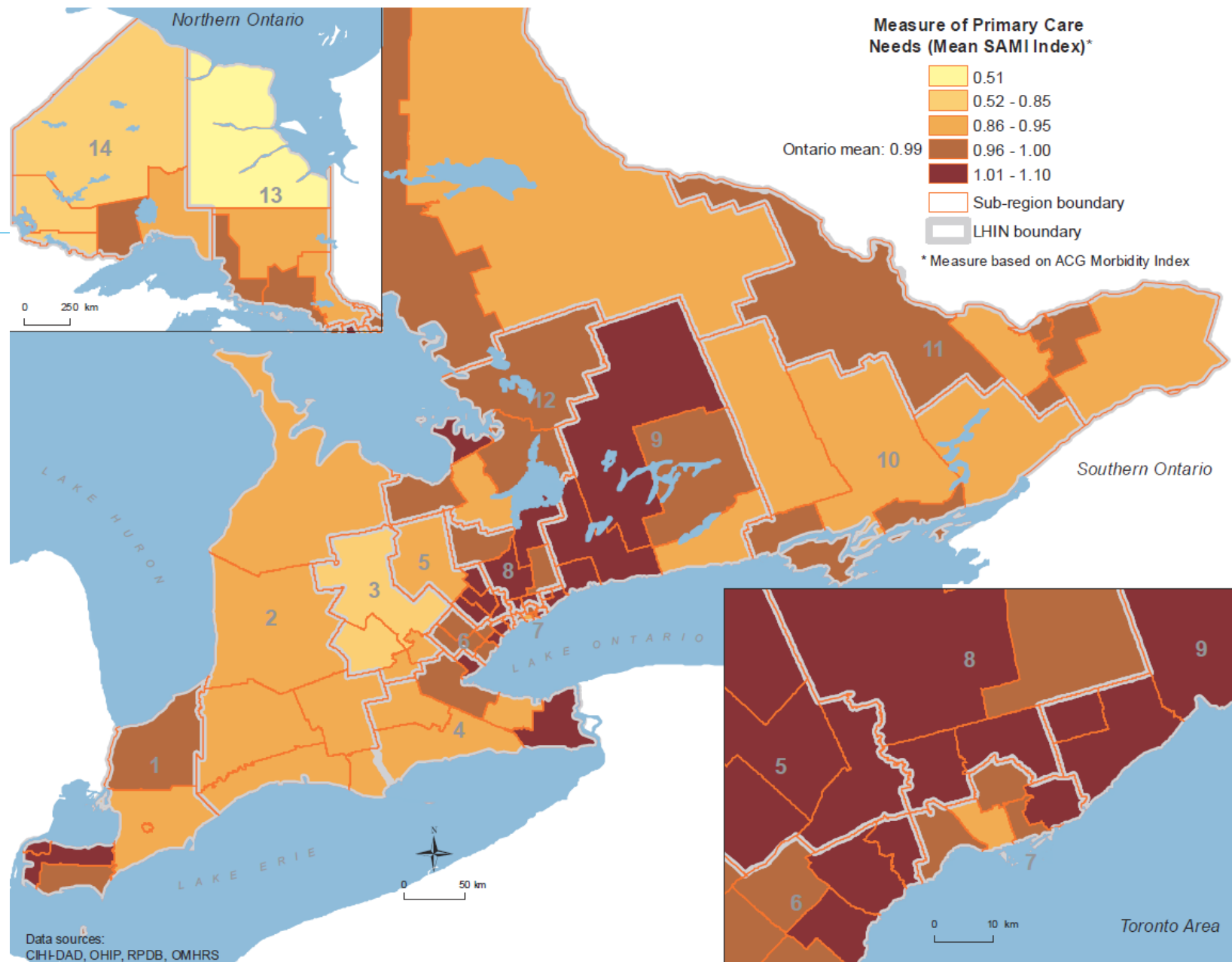
Population Health Needs

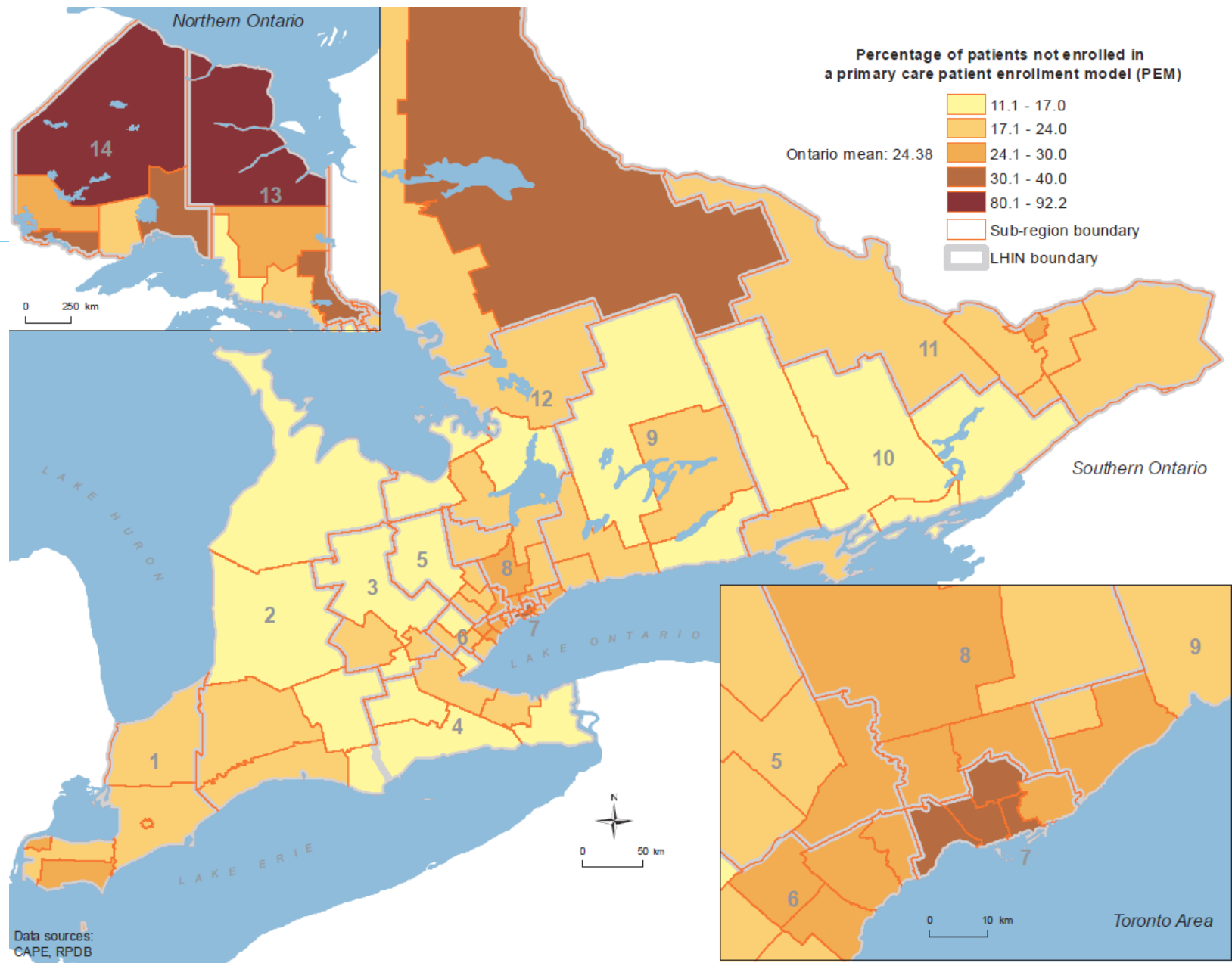
- What measures?
 - low income
 - recent immigrants
 - seniors
 - seniors living alone
 - disability
 - primary care needs (SAMI)
 - not enrolled in a primary care enrolment model (PEM)
 - mental health
- Any others?

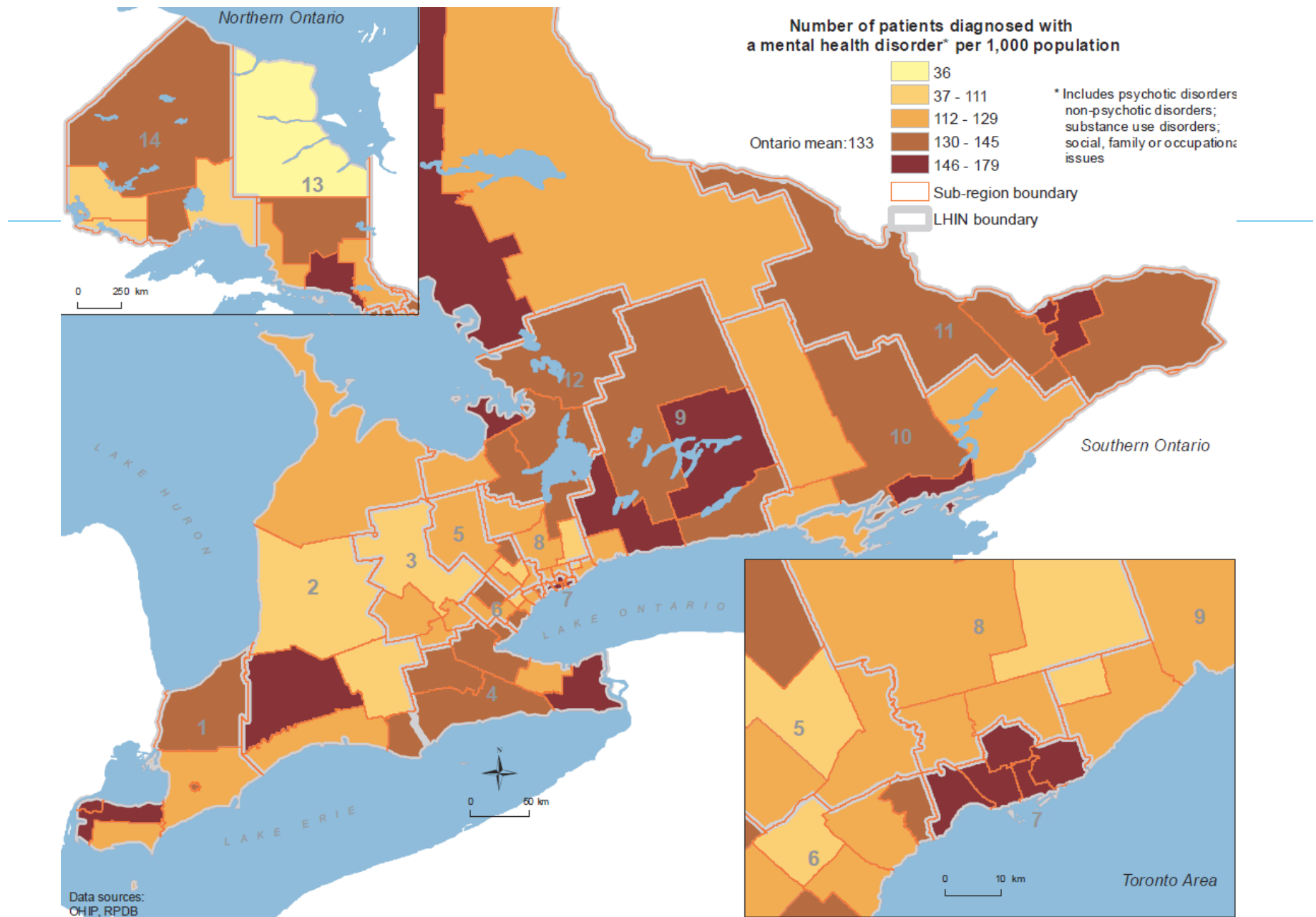










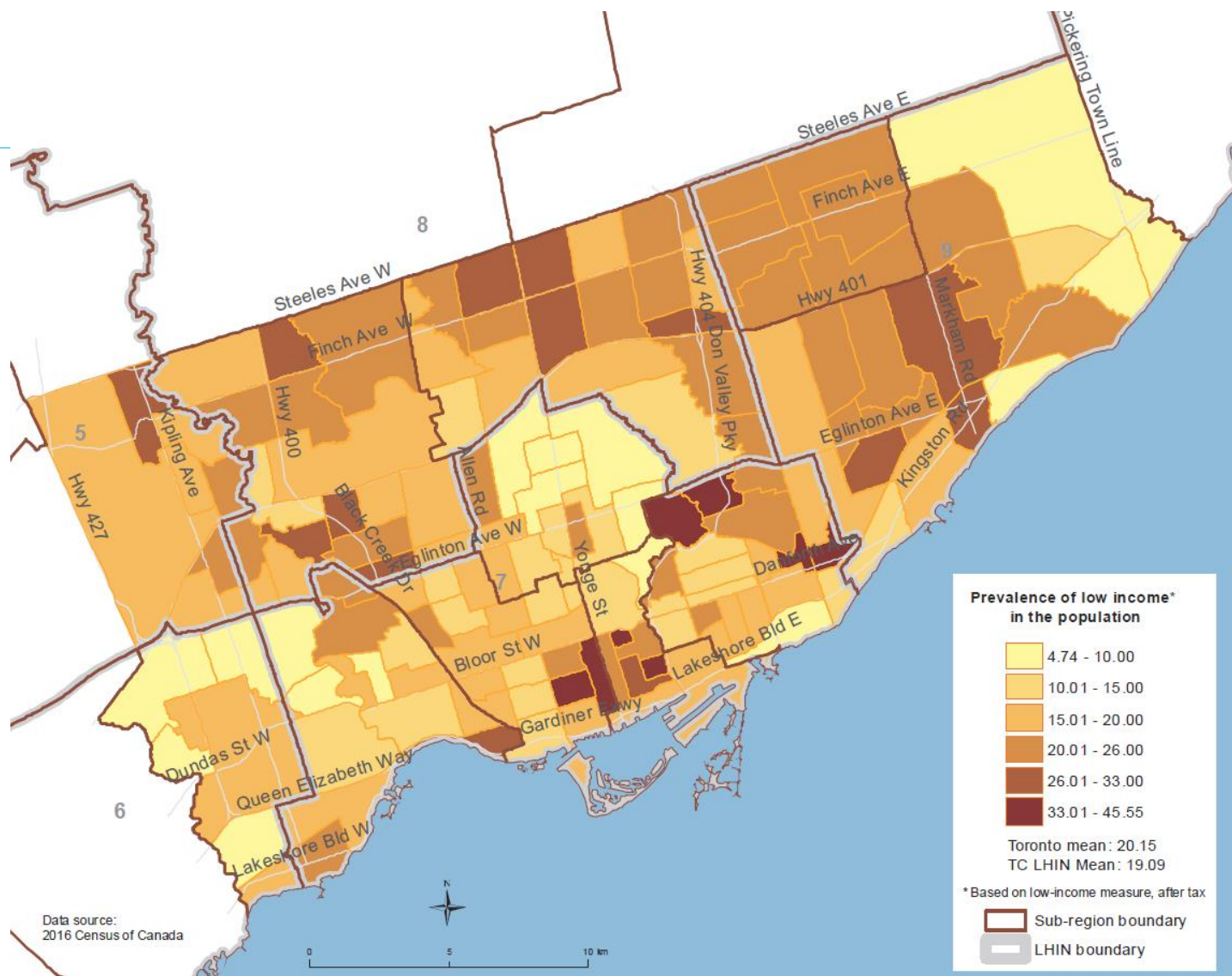


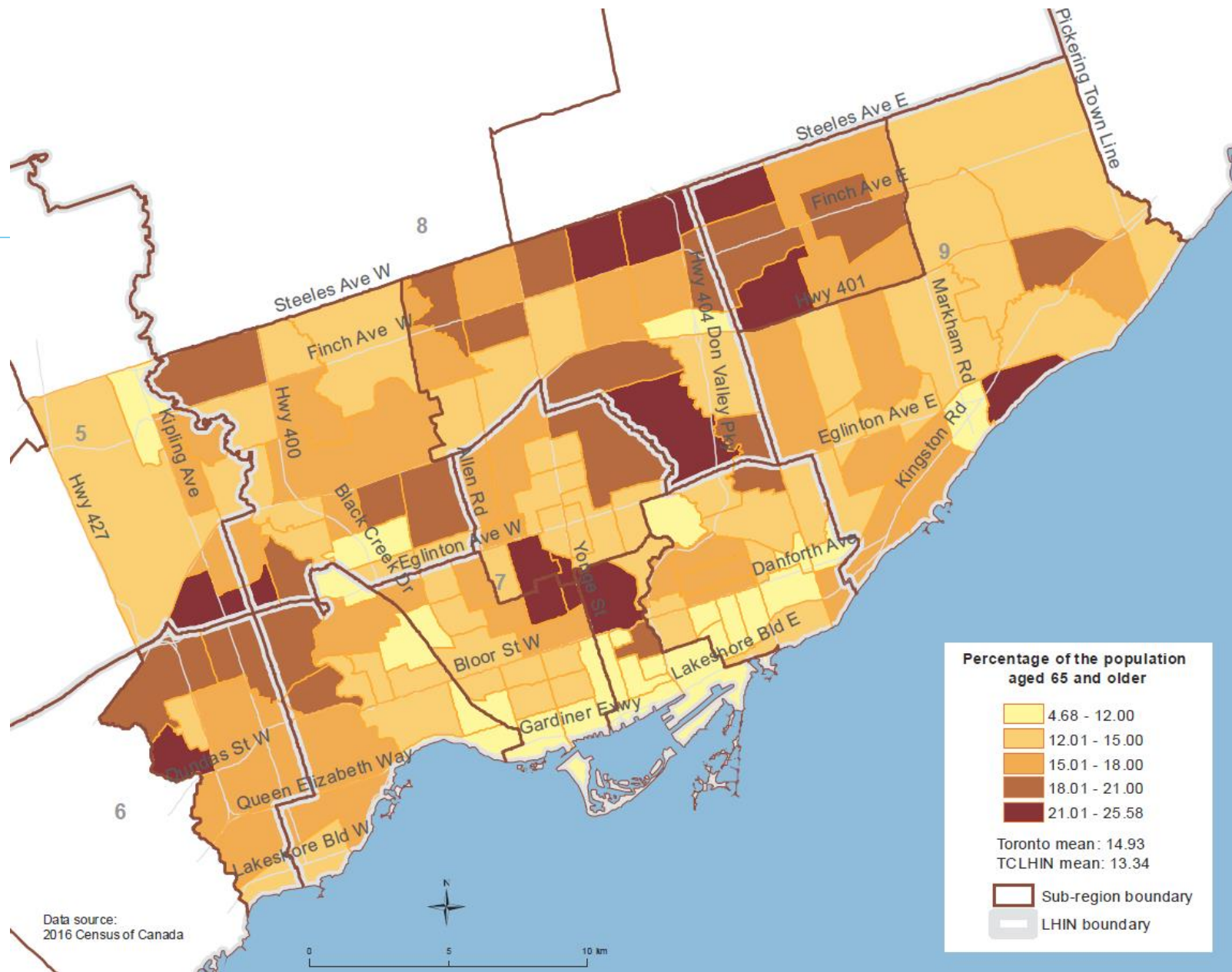
Do Primary Care Needs Vary?

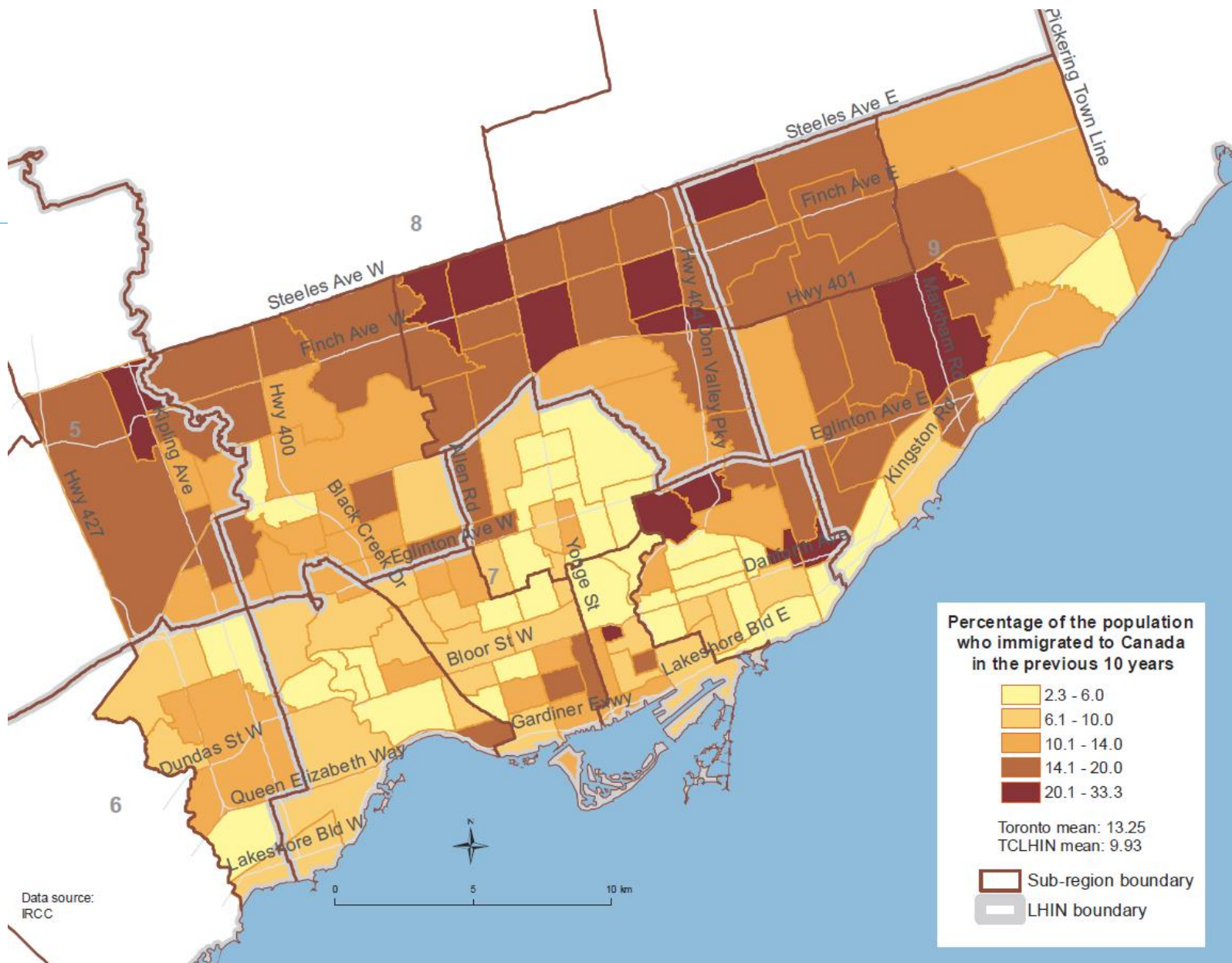
Toronto:

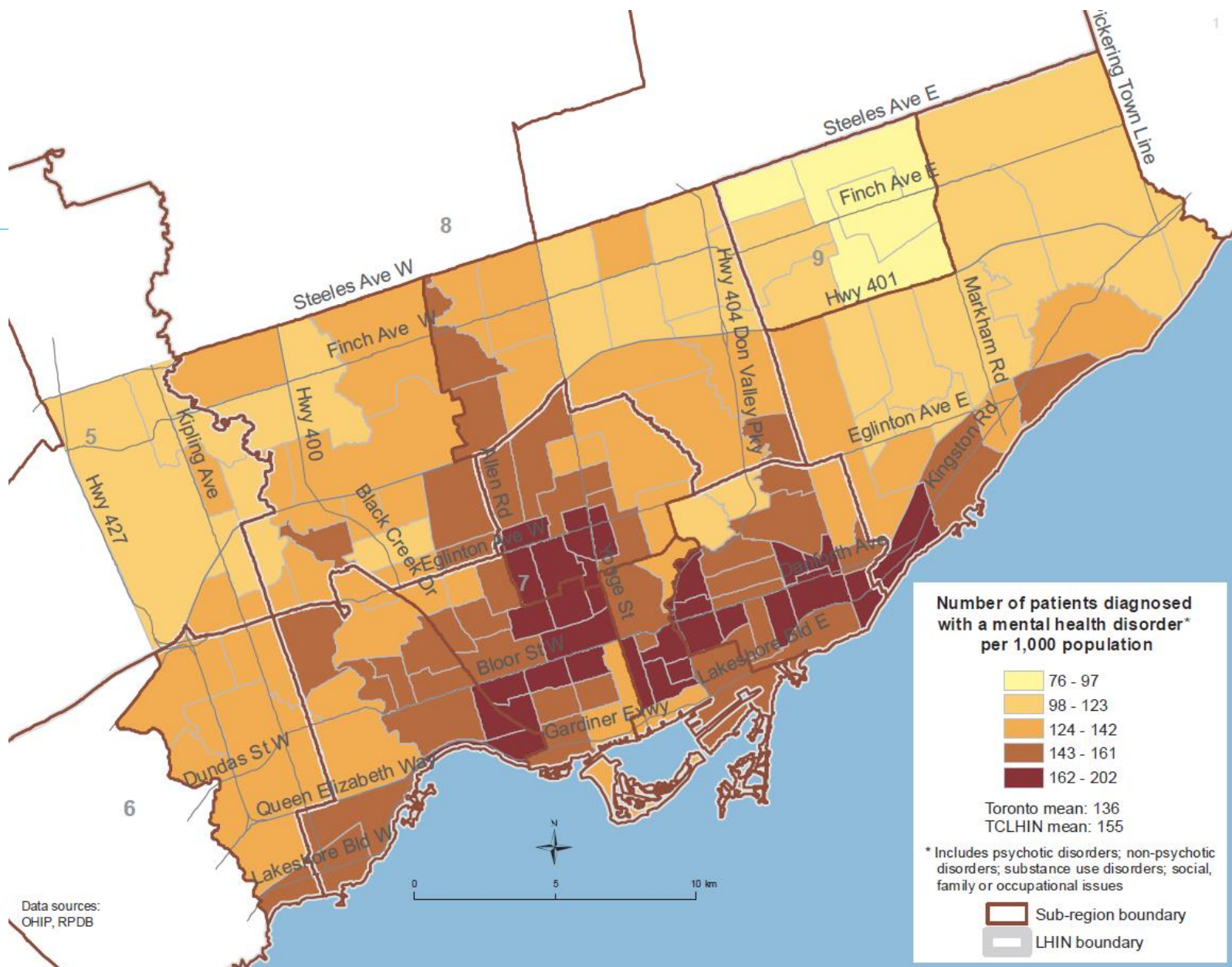
- poverty, immigration, social isolation, chronic illness, mental health, not connected to care

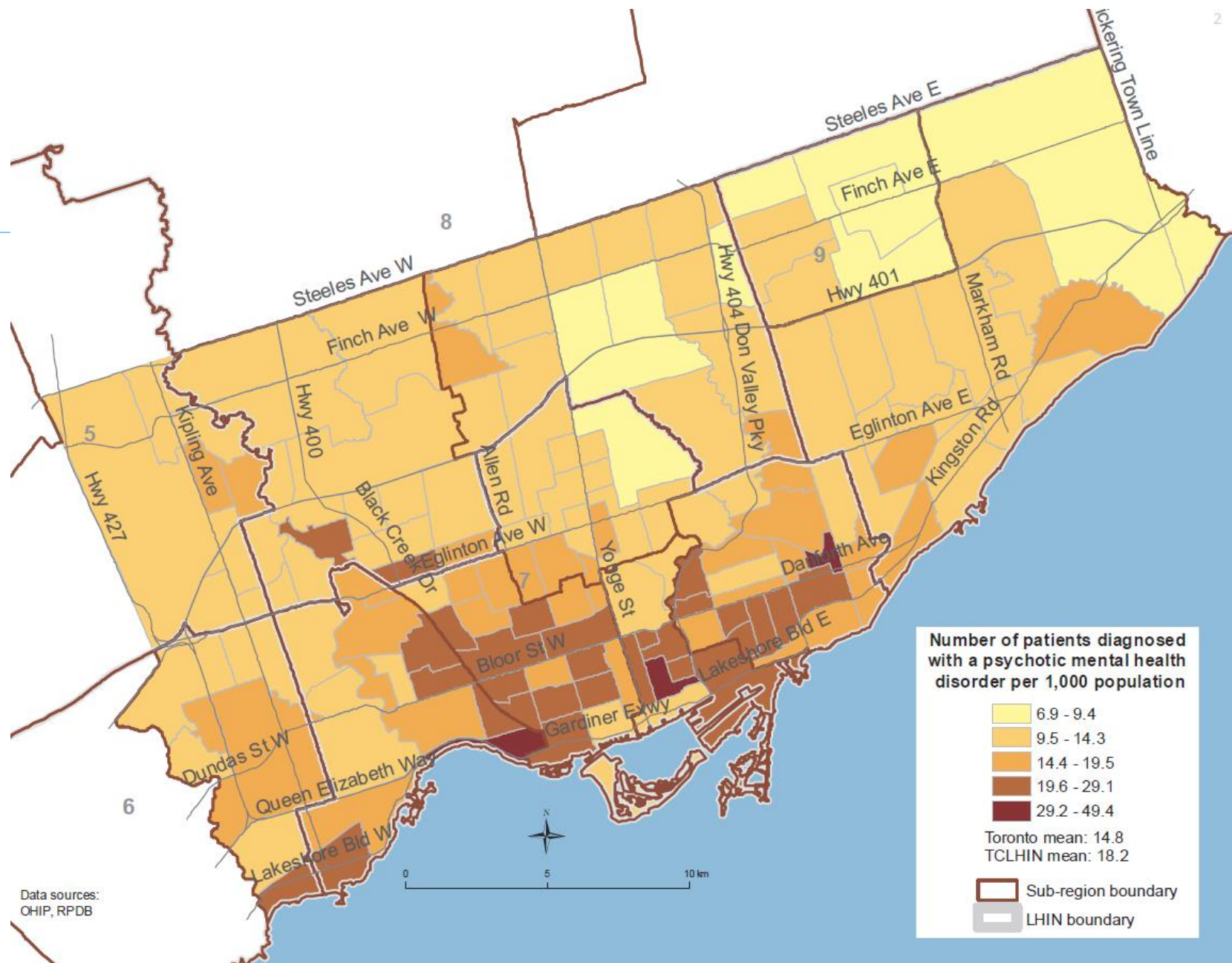
Using this Information Locally

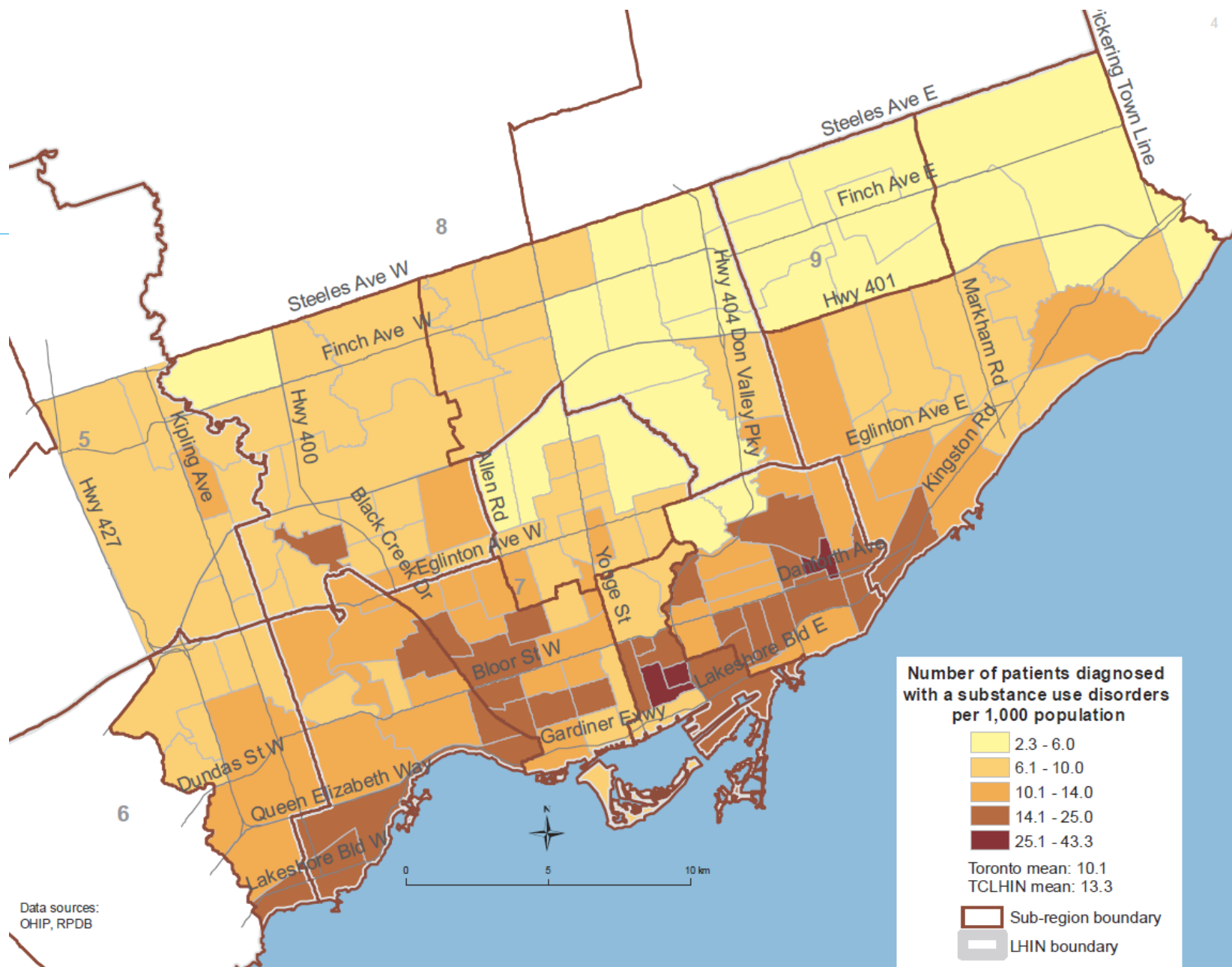












How Would You Plan for Primary Care in Ontario's 76 Sub-Regions?

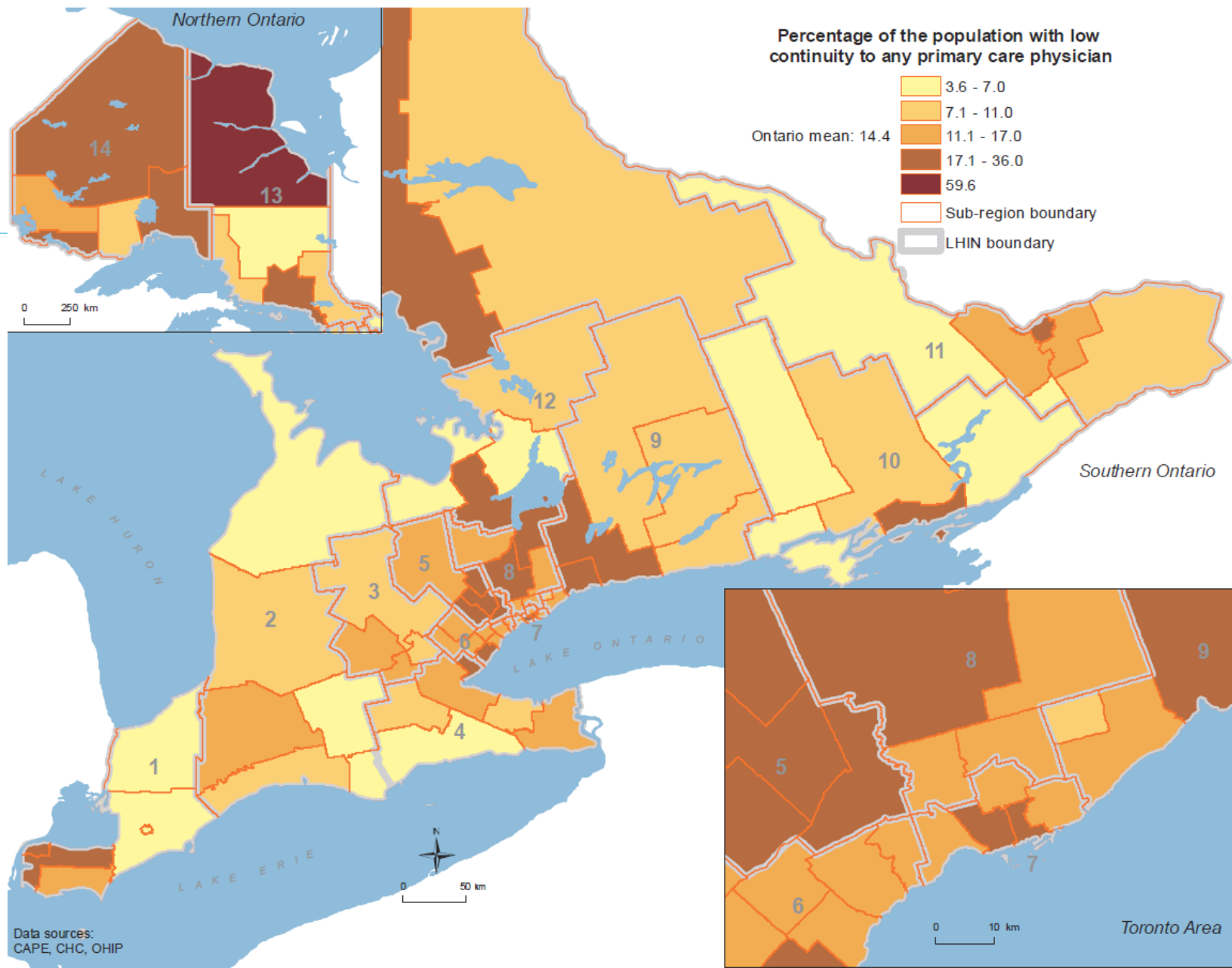
- Where to start?
 - population health needs?
 - **utilization?**
 - providers?
 - something else?

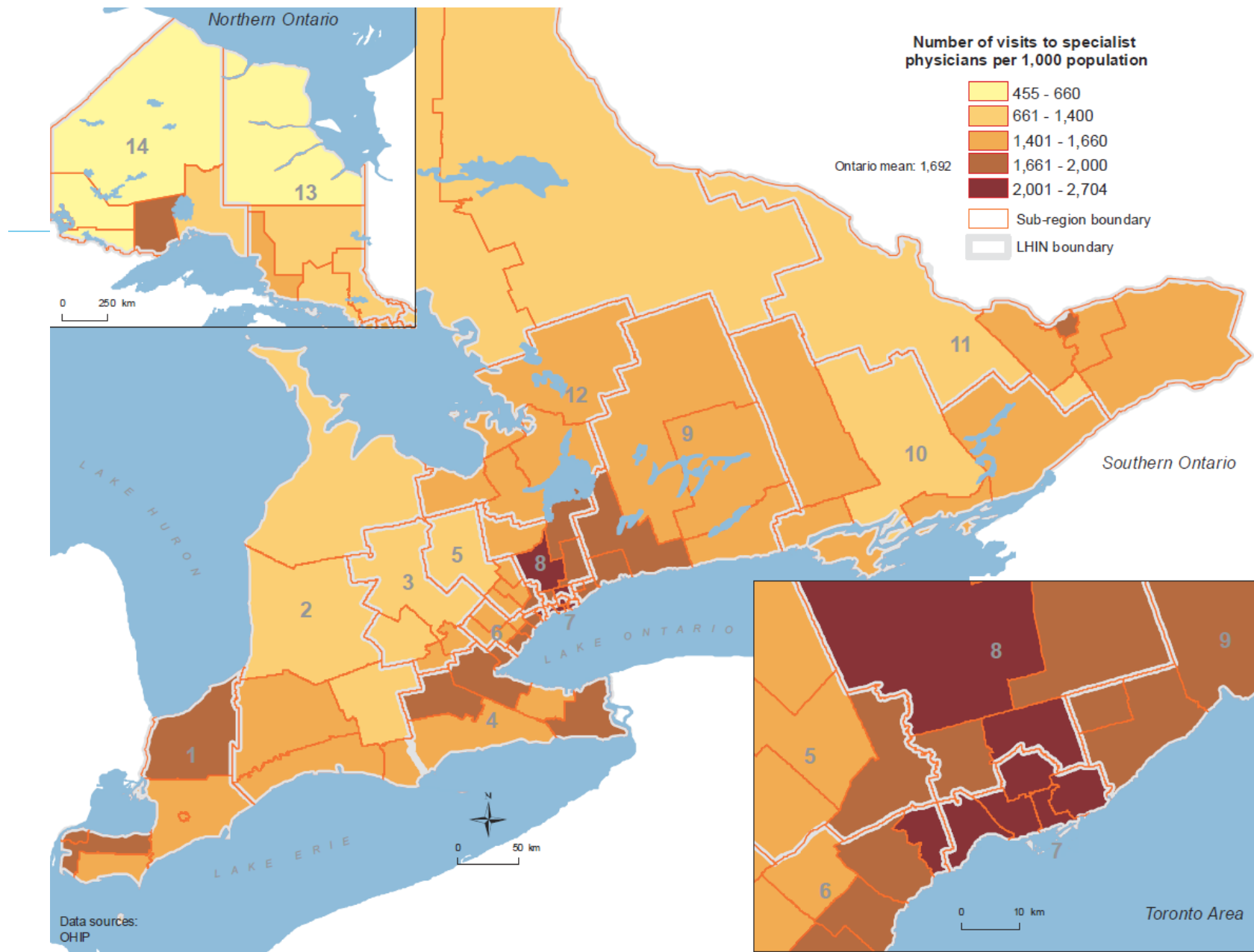
Utilization

- What measures?
- Do they vary across the province?

Utilization

- What measures?
 - few primary care visits
 - low continuity of primary care visits
 - lack of after-hours care
 - emergency department visits
 - few specialist visits
- Any others?



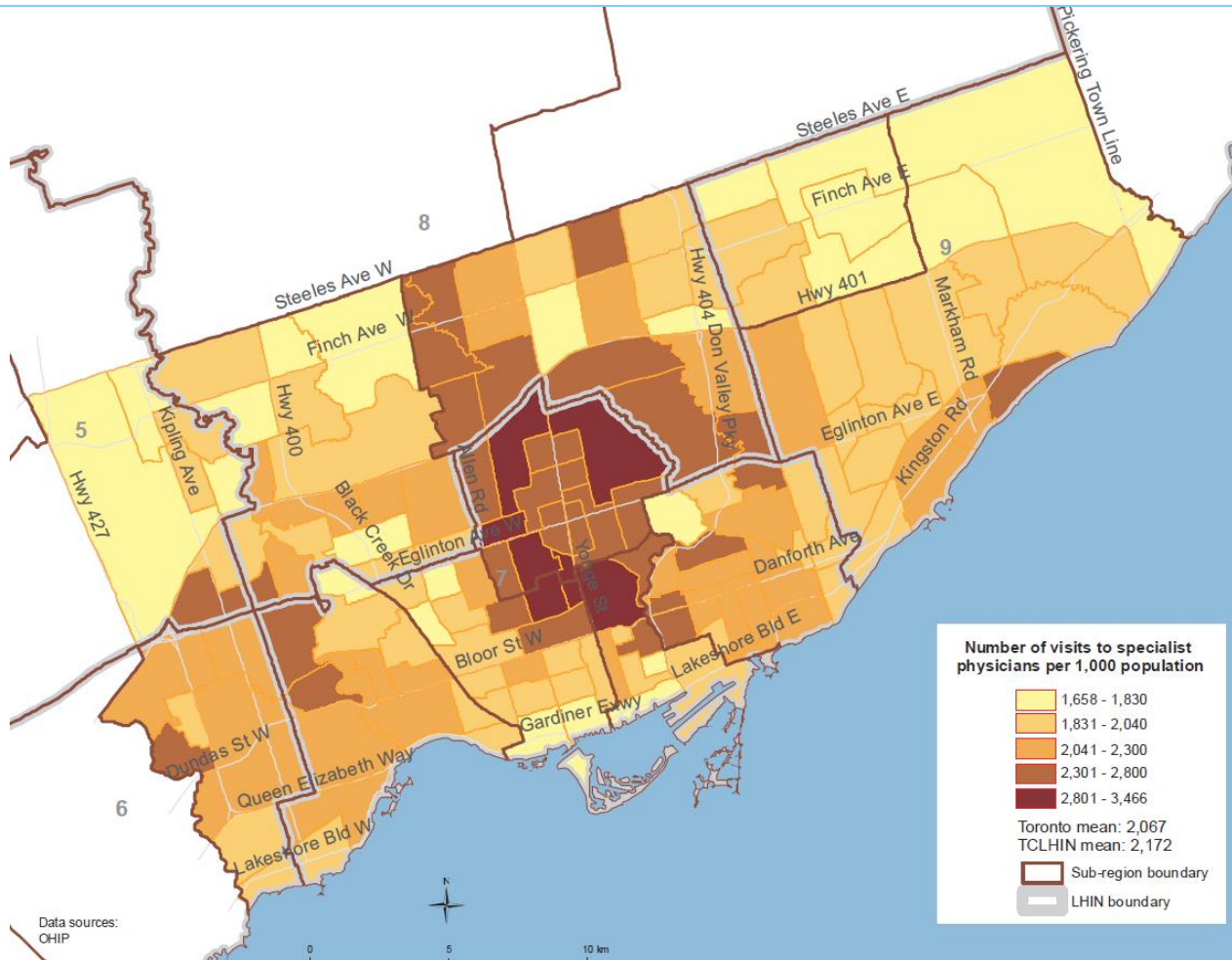


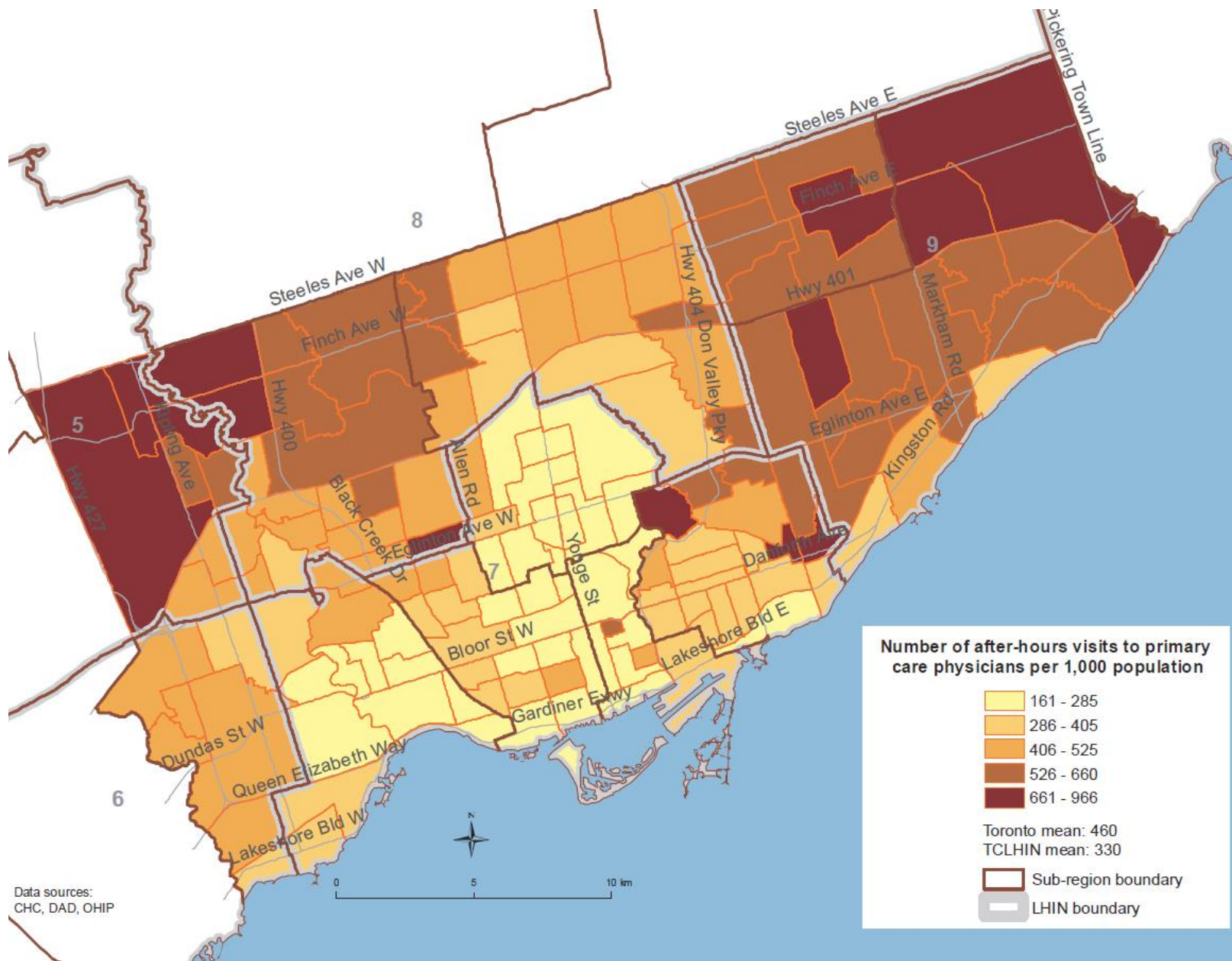
Does Utilization Vary?

Toronto:

- lower continuity, greater use of specialists

Using this Information Locally





How Would You Plan for Primary Care in Ontario's 76 Sub-Regions?

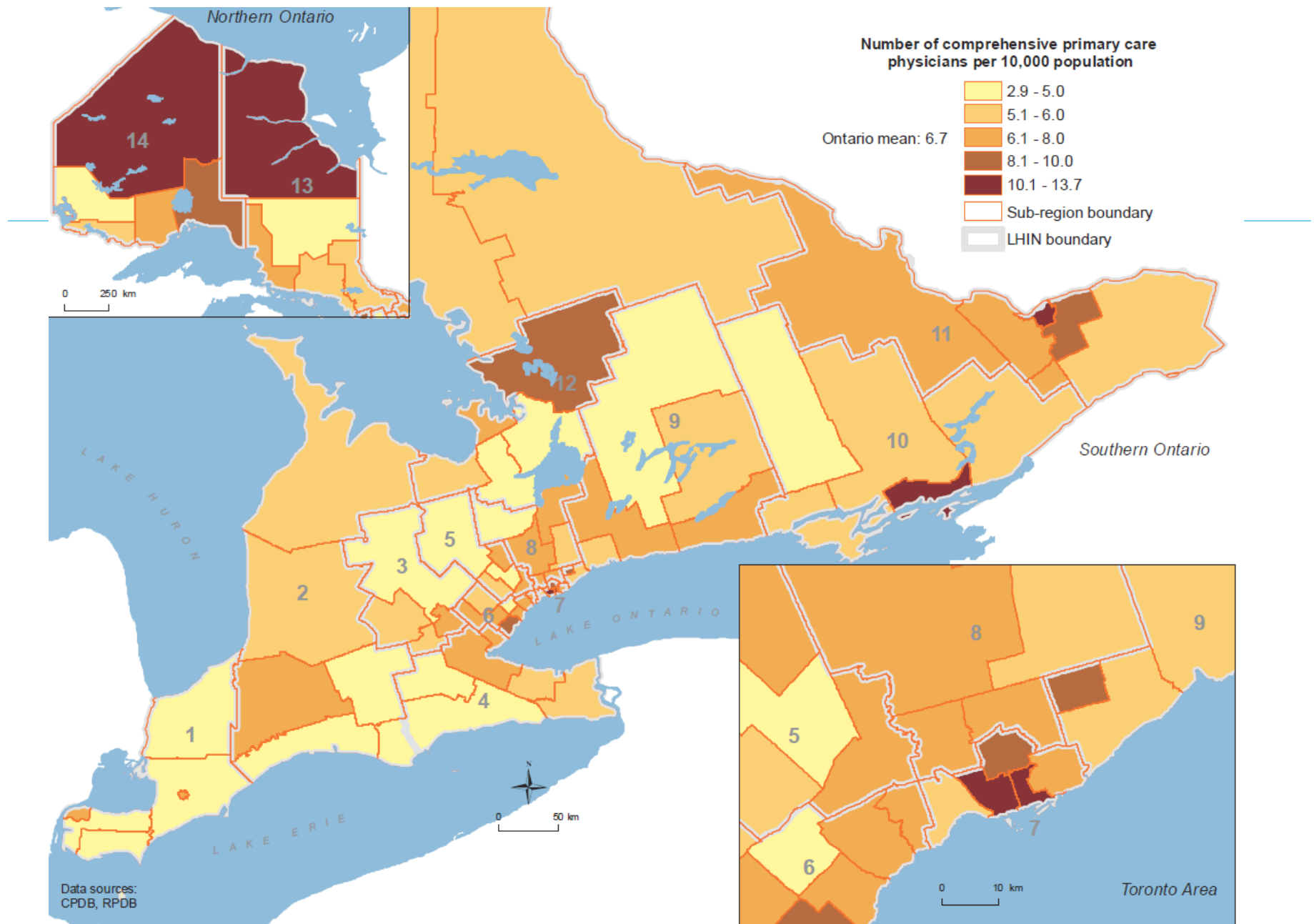
- Where to start?
 - population health needs?
 - utilization?
 - **providers?**
 - something else?

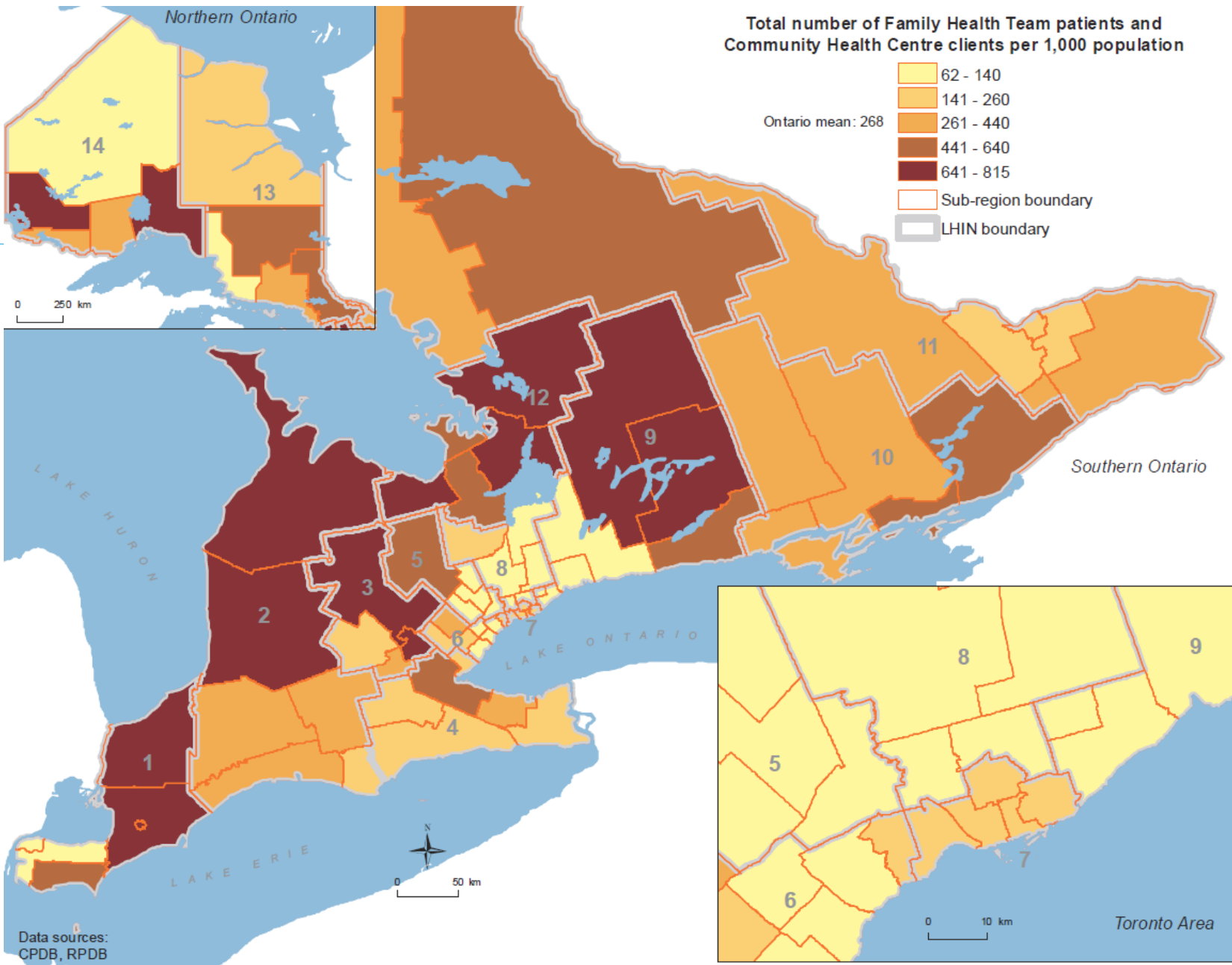
Providers: Primary Care Physicians and Inter-professional Teams

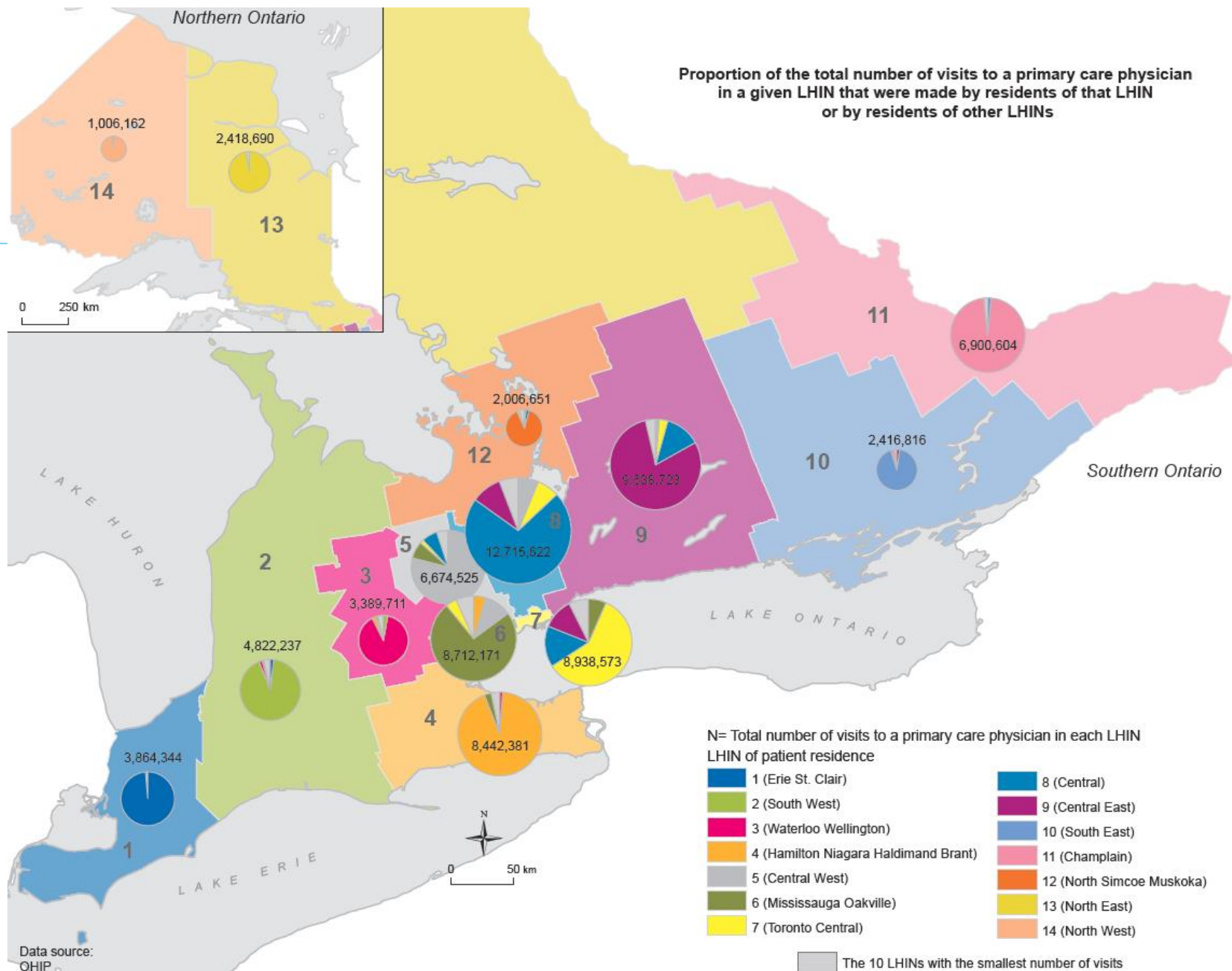
- What measures?
- Do they vary across the province?

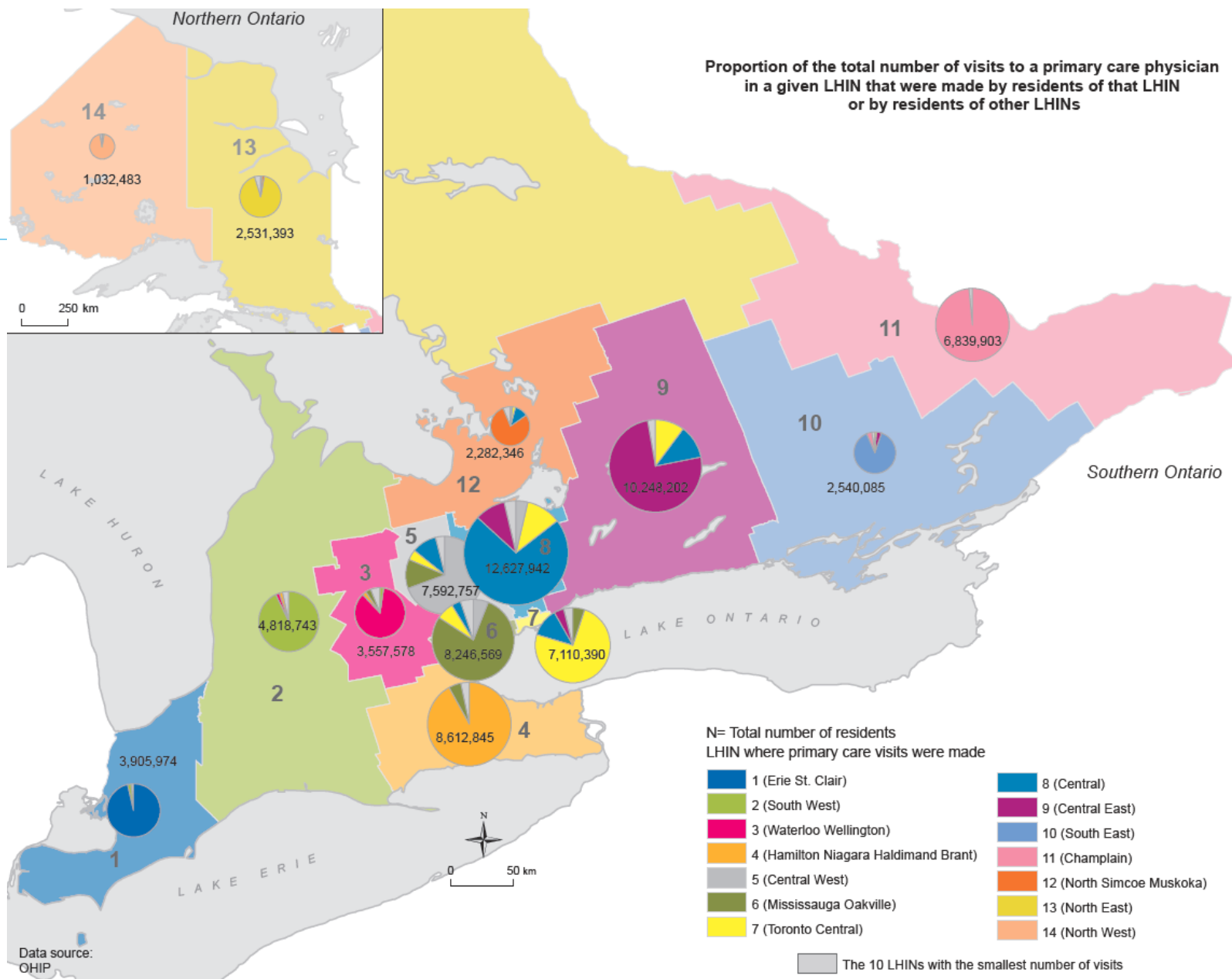
Providers

- What measures?
 - comprehensive PC physicians
 - FHT and CHCs per population
 - patient flow across LHINs
- Any others?







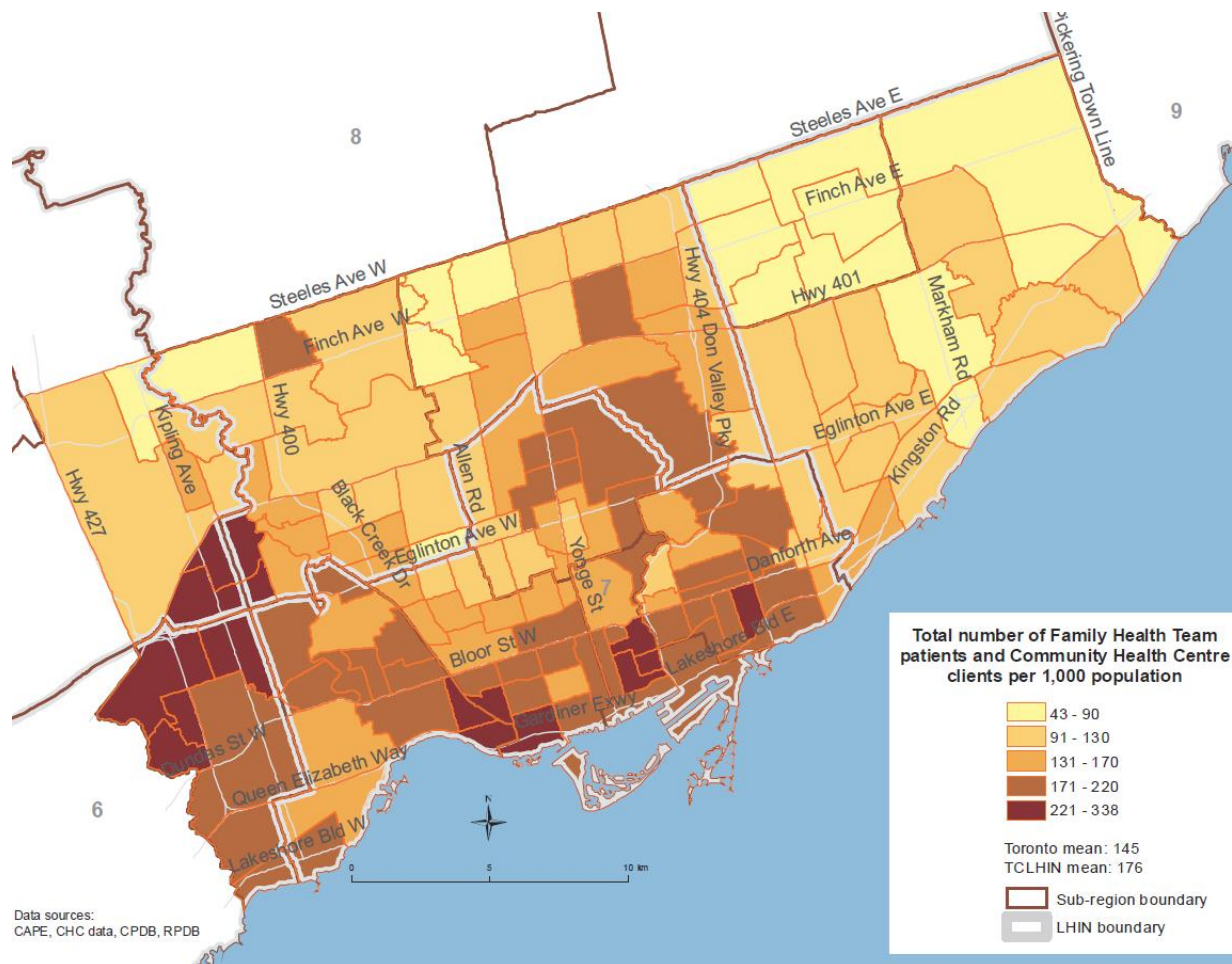


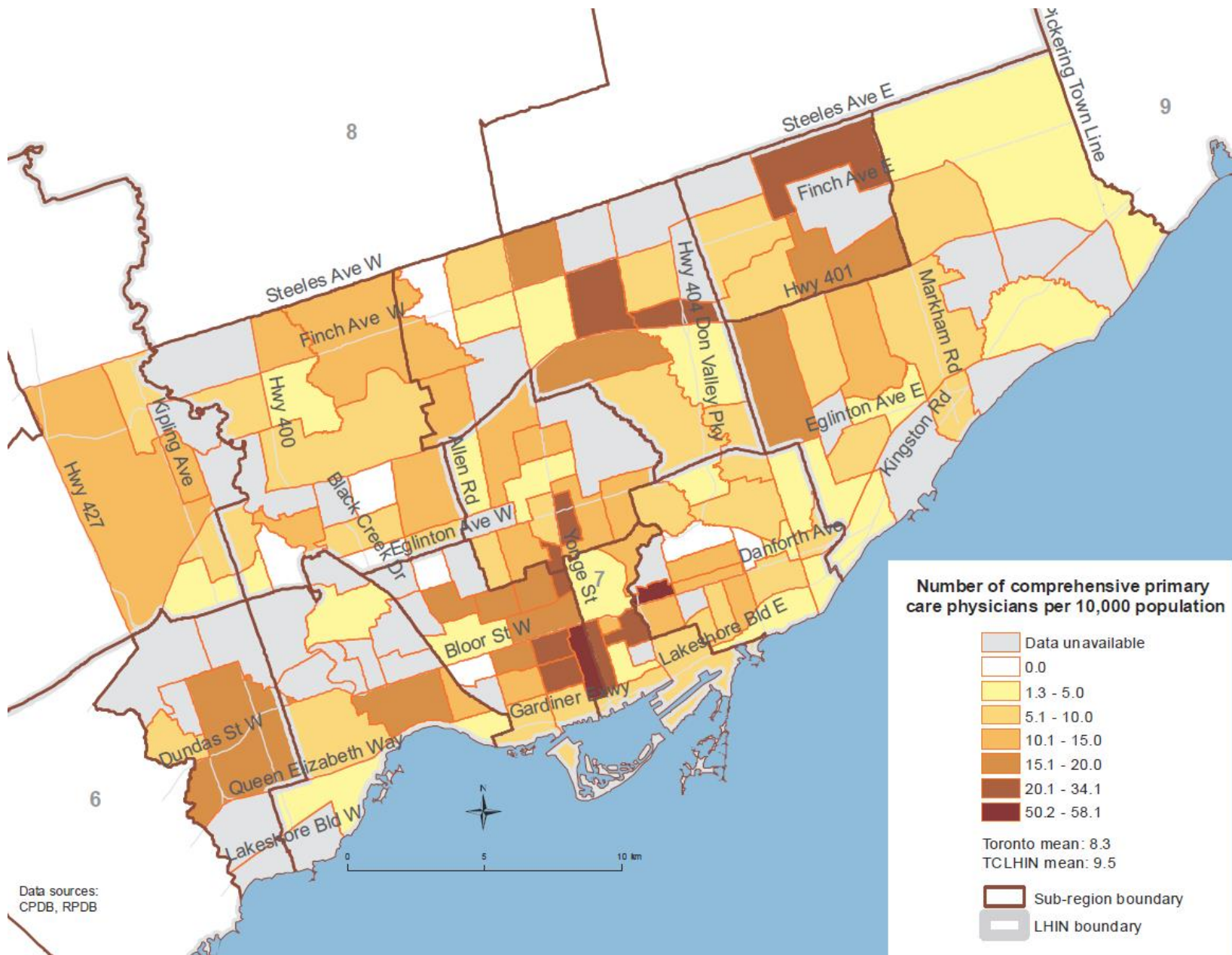
Do Providers Vary?

Toronto:

- greater inflow of primary care visits, over-estimation of physician supply; less team care

Using this Information Locally





Do Inequities and Gaps in Care Vary?

- Toronto
 - high social needs
 - low attachment
 - low continuity
 - large inflows
 - few teams

Comments, Questions?

